



RADIATED EMISSION

Model Name : CBS504805

Model No. :

Serial No. :

Points : 3

Detector : PEAK/QP

Polarization : Hori. & Vert.

Limit: [EN 55022] Class B<3m>

Tested by : K.Kinoshita

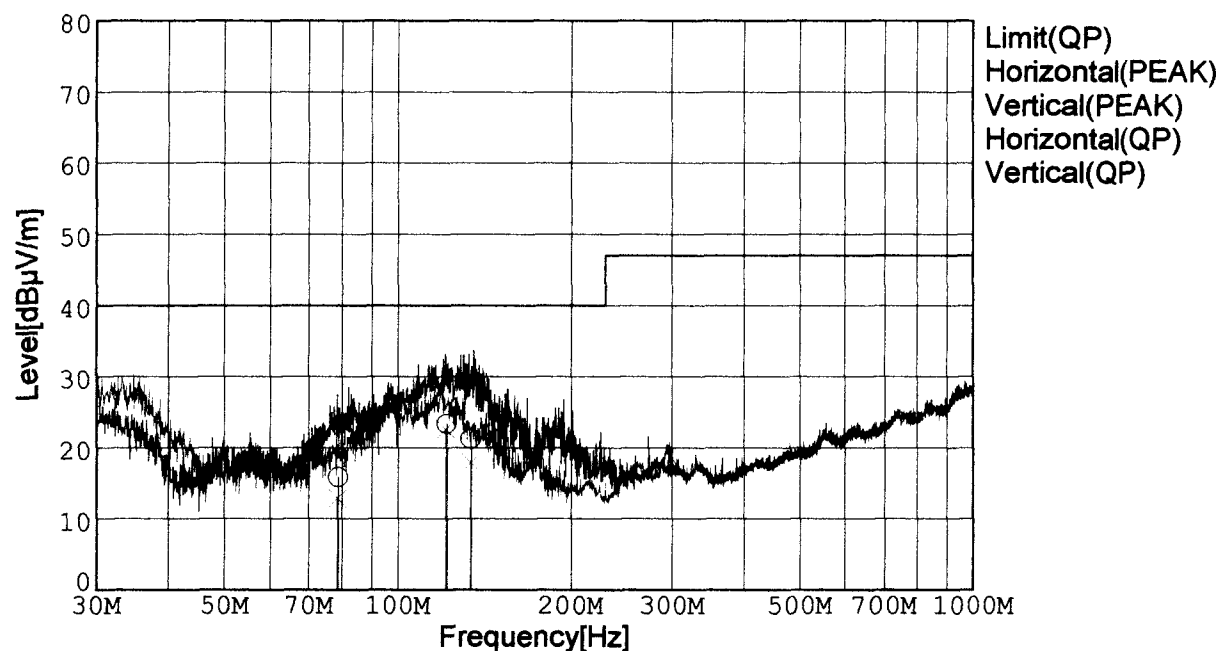
Temp. : 25degC

Humi. : 40%

Date : 2001/2/27 14:15

Test Equip. : R3132,ESPC

Comment : DC48V Io=10A



Frequency [MHz]	Meter Reading (QP) [dBμV]	Ant. Type	Antenna Factor [dB/m]	Cable & Preamp [dB]	Level (QP) [dBμV/m]	Angle[°]	Height [cm]	Polar.	Limit [dBμV/m]	Margin [dB]
78.692	40.8	BL	6.8	-31.7	15.9	302	160	Hori.	40.0	24.1
121.924	43.9	BL	11.0	-31.5	23.4	308	151	Hori.	40.0	16.6
134.164	41.6	BL	11.0	-31.4	21.2	327	130	Hori.	40.0	18.8
78.472	37.8	BL	6.8	-31.7	12.9	356	149	Vert.	40.0	27.1
121.271	43.1	BL	11.0	-31.5	22.6	45	121	Vert.	40.0	17.4
134.080	38.3	BL	11.0	-31.4	17.9	30	137	Vert.	40.0	22.1

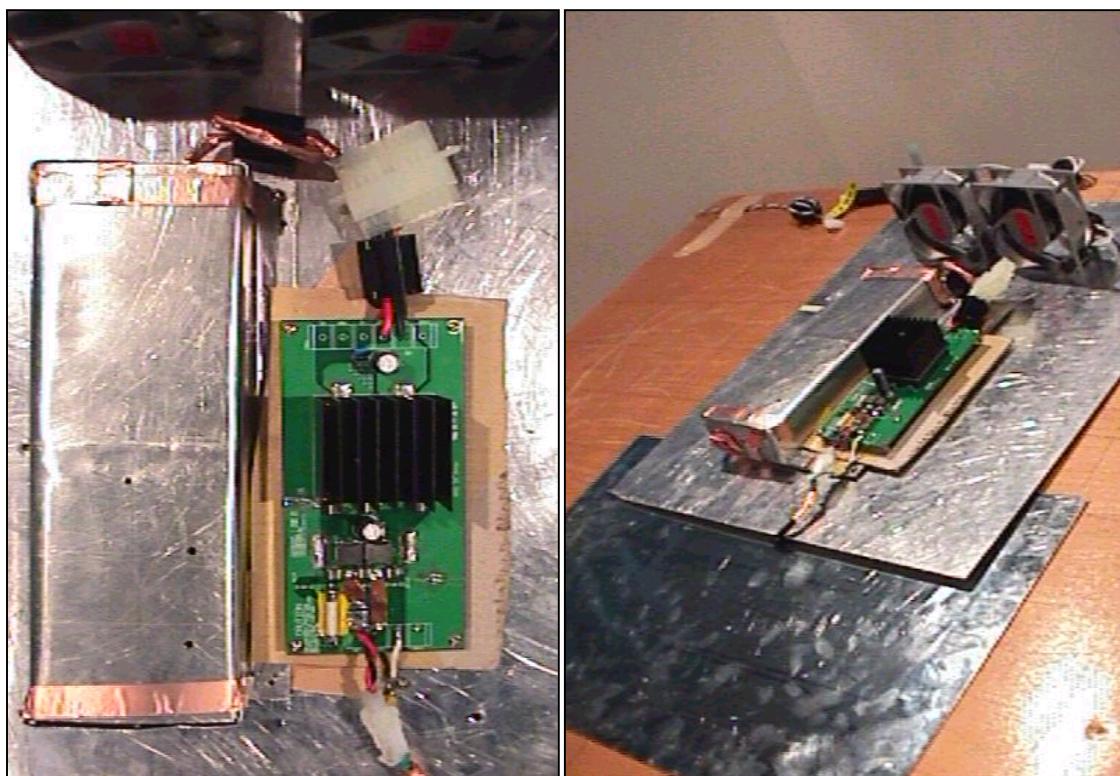
BL: Biconi-Log

Conditions

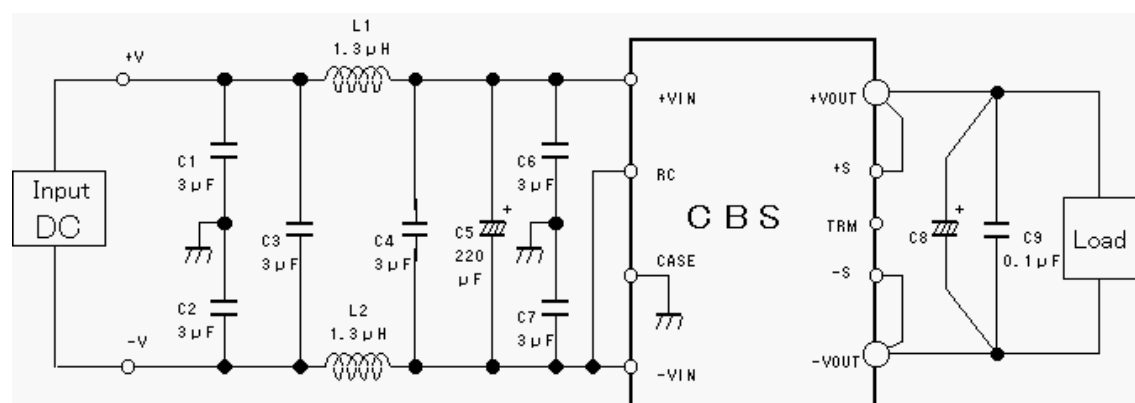
Date 2001/3/7

Test : RADIATED EMISSION
 Model Name : CBS5048

○Photographs of Test Set-Up



○Testing circuitry



L1, L2 : ETQP6F1R3LFA (MATSUSHITA)
 C1, C2, C3, C4, C6, C7 : CY55Y5P2A305M(TOKIN)
 C5 : 80V 220 μ F PFseries (nichicon)
 C8 : CBS504805 10V 2200 μ F LXZseries (NIPPON CHEMI-CON)
 CBS504812 25V 470 μ F LXZseries (NIPPON CHEMI-CON)
 CBS504828 35V 220 μ F LXZseries (NIPPON CHEMI-CON)
 C9 : MDD21H104M (Nitsuko)

Fig. Testing circuitry



LINE CONDUCTION

Model Name : CBS504805

Model No. :

Serial No. :

Points : 3

Detector : PEAK/QP/Ave.

Line Mode : VA/VB

Limit1: [EN 55022] Class B(QP)

Limit2: [EN 55022] Class B(Ave.)

Tested by : K.Kinoshita

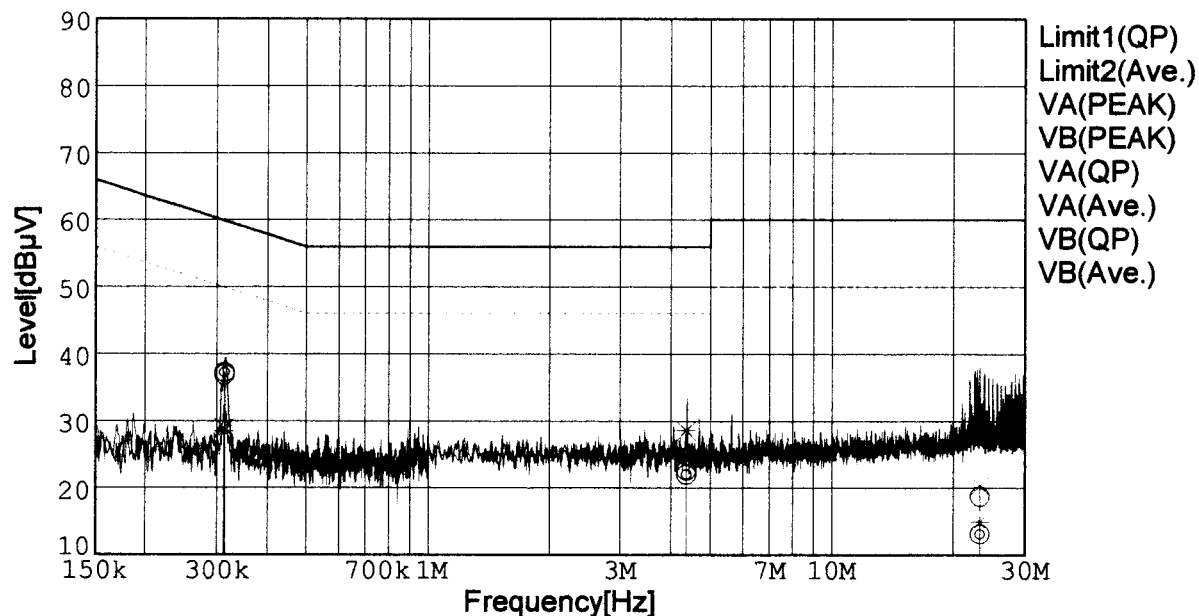
Temp. : 25degC

Humi. : 40%

Date : 2001/2/28 16:48

Test Equip. : R3132,ESPC

Comment : DC48V Io=10A



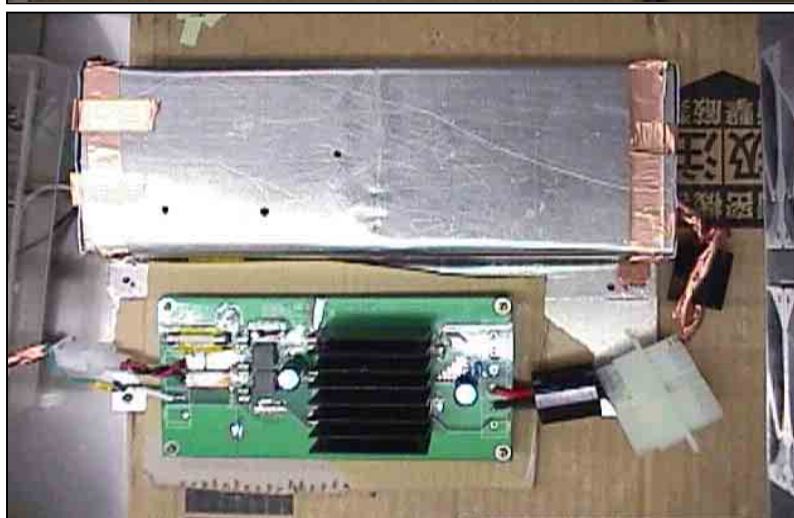
Frequency [MHz]	Meter Reading (QP) [dBμV]	Meter Reading (Ave.) [dBμV]	Factor [dB]	Level (QP) [dBμV]	Level (Ave.) [dBμV]	Line	Limit (QP) [dBμV]	Limit (Ave.) [dBμV]	Margin (QP)[dB]	Margin (Ave.) [dB]
0.3138	27.0	27.4	9.8	36.8	37.2	VA	59.9	49.9	23.1	12.7
4.3679	12.6	12.0	10.0	22.6	22.0	VA	56.0	46.0	33.4	24.0
23.2080	8.4	2.8	10.3	18.7	13.1	VA	60.0	50.0	41.3	36.9
0.3125	19.1	18.7	9.8	28.9	28.5	VB	59.9	49.9	31.0	21.4
4.3660	18.5	18.6	10.0	28.5	28.6	VB	56.0	46.0	27.5	17.4
23.2047	10.0	4.6	10.3	20.3	14.9	VB	60.0	50.0	39.7	35.1

Conditions

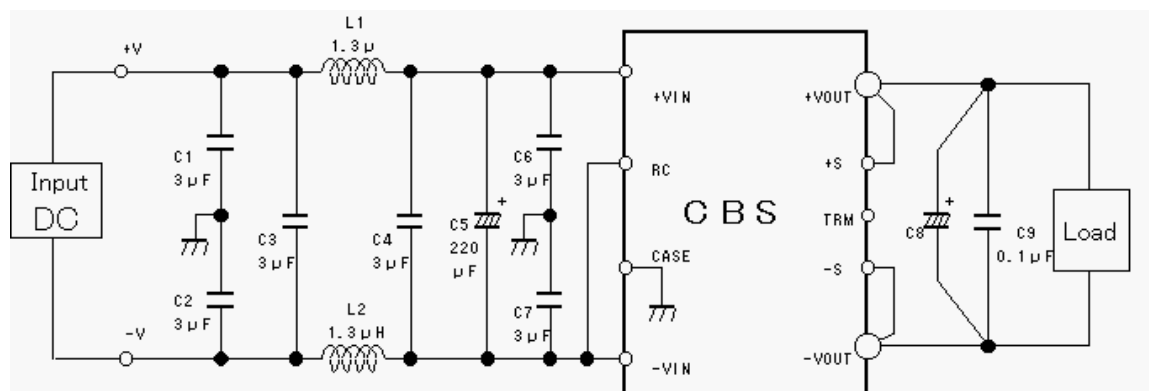
Date 2001/3/7

Test : LINE CONDUCTION
Model Name : CBS5048

Photographs of Test Set-Up



Testing circuitry



L1, L2 : ETQP6F1R3LFA (MATSUSHITA)
C1, C2, C3, C4, C6, C7 : CY55Y5P2A305M(TOKIN)
C5 : 80V 220 μ F PFseries (nichicon)
C8 : CBS504805 10V 2200 μ F LXZseries (NIPPON CHEMI-CON)
CBS504812 25V 470 μ F LXZseries (NIPPON CHEMI-CON)
CBS504828 35V 220 μ F LXZseries (NIPPON CHEMI-CON)
C9 : MDD21H104M (Nitsuko)

Fig. Testing circuitry