



RADIATED EMISSION

Model Name : CBS502424

Model No. :

Serial No. :

Points : 2

Detector : PEAK/QP

Polarization : Hori. & Vert.

Limit: [EN 55022] Class B<3m>

Tested by : T.Oiwake

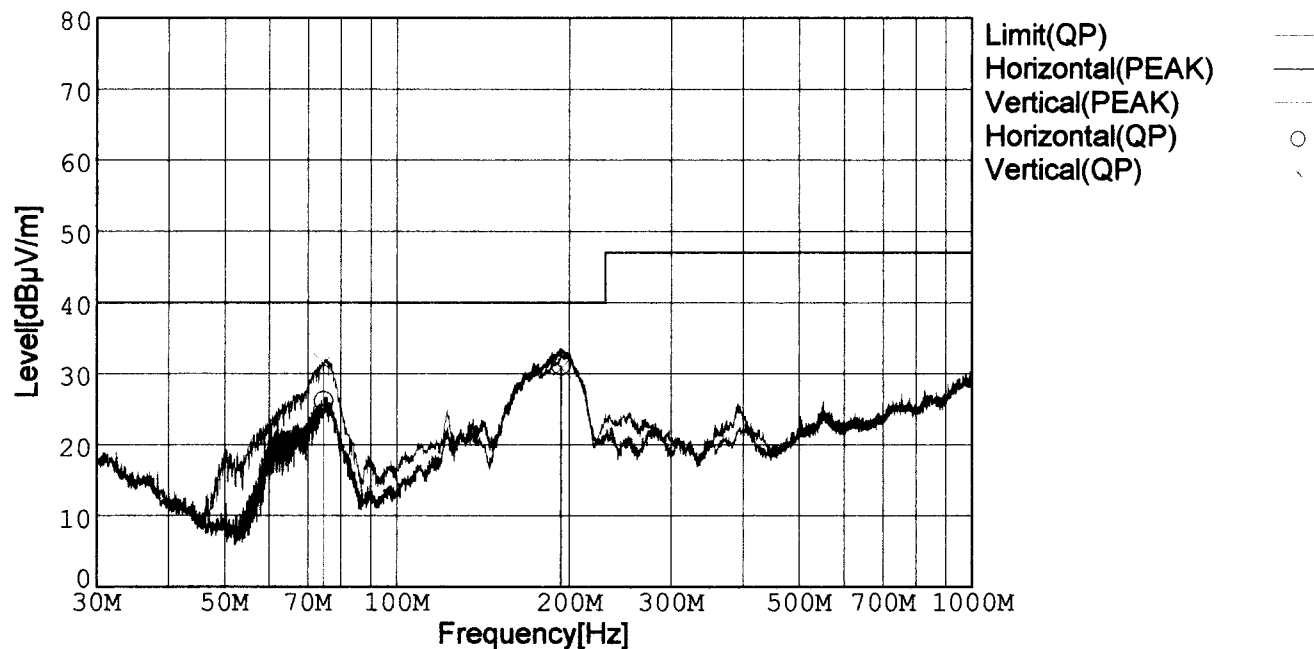
Temp. : 25degC

Humi. : 40%

Date : 2002/7/18 15:39

Test Equip. : R3132,ESPC

Comment : DC 24V, Io=2.1A



Frequency [MHz]	Meter Reading (QP) [dBμV]	Ant. Type	Antenna Factor [dB/m]	Cable & Preamp [dB]	Level (QP) [dBμV/m]	Angle[°]	Height [cm]	Polar.	Limit [dBμV/m]	Margin [dB]
74.711	51.5	BL	6.3	-31.7	26.1	267	153	Hori.	40.0	13.9
193.381	54.0	BL	8.4	-31.2	31.2	273	109	Hori.	40.0	8.8
74.667	56.9	BL	6.3	-31.7	31.5	341	129	Vert.	40.0	8.5
193.538	53.6	BL	8.4	-31.2	30.8	35	132	Vert.	40.0	9.2

BL: Biconi-Log

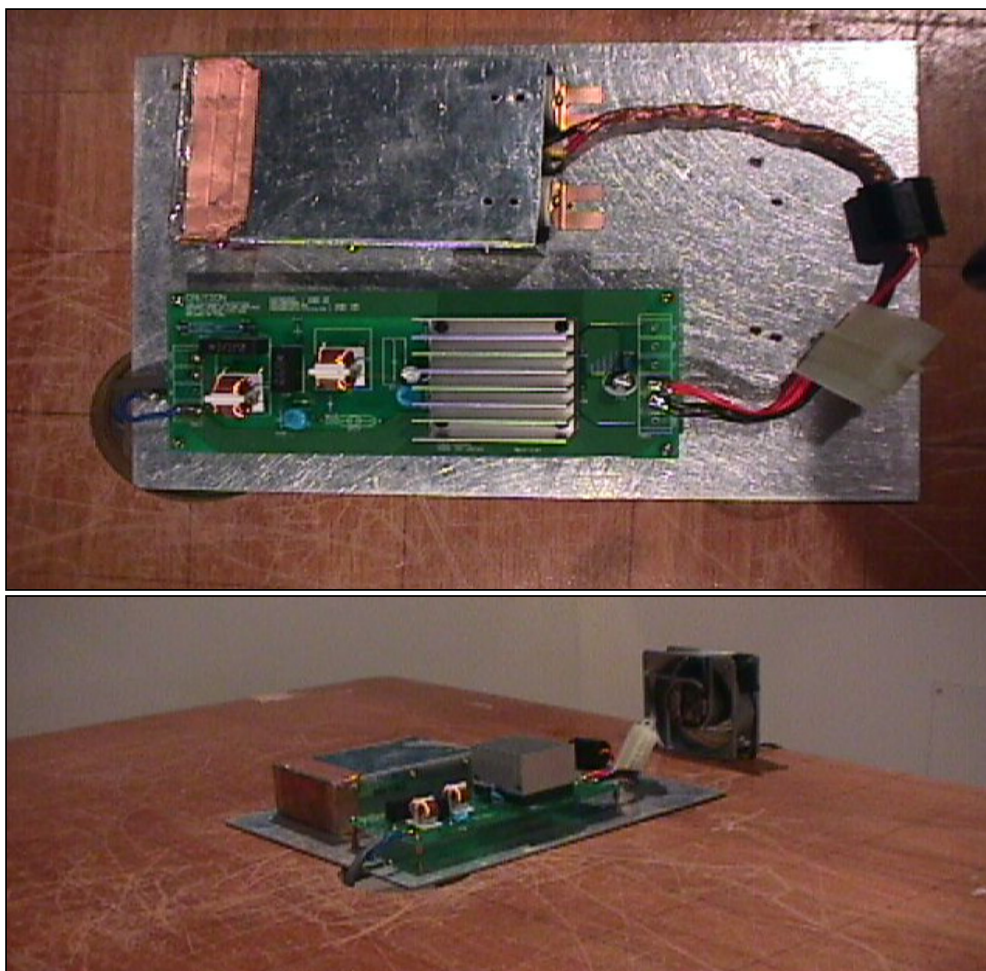
Conditions

Date 2002/7/19

Test : RADIATED EMISSION

Model Name : CBS502403/15/24

○Photographs of Test Set-Up



○Testing circuitry

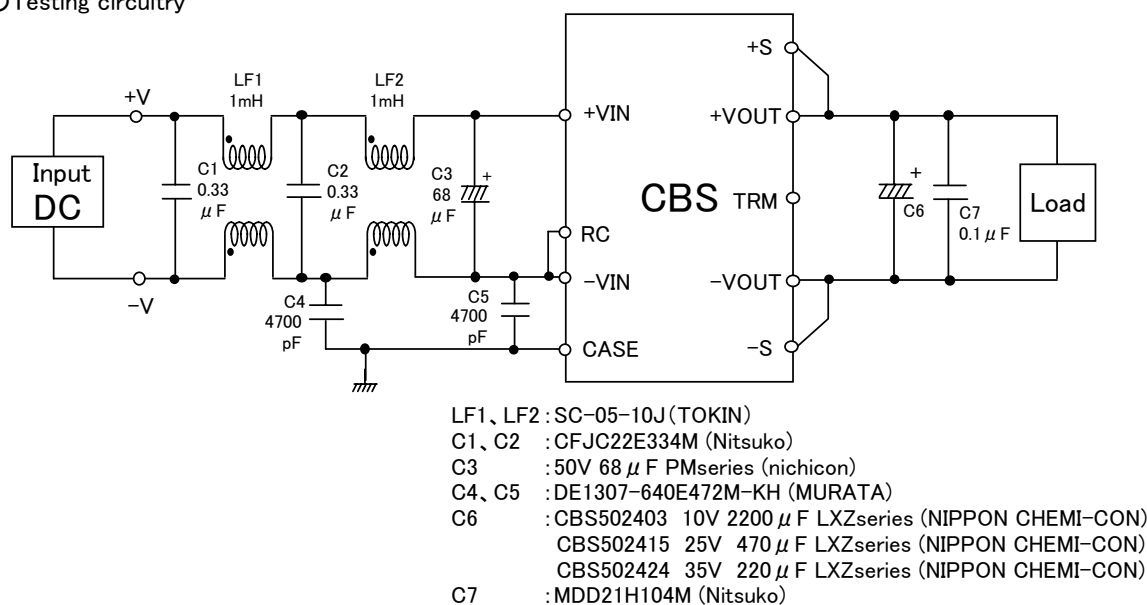


Fig. Testing circuitry



LINE CONDUCTION

Model Name : CBS502424

Model No. :

Serial No. :

Points : 2

Detector : PEAK/QP/Ave.

Line Mode : VA/VB

Limit1: [EN 55022] Class B(QP)

Limit2: [EN 55022] Class B(Ave.)

Tested by : T.Oiwake

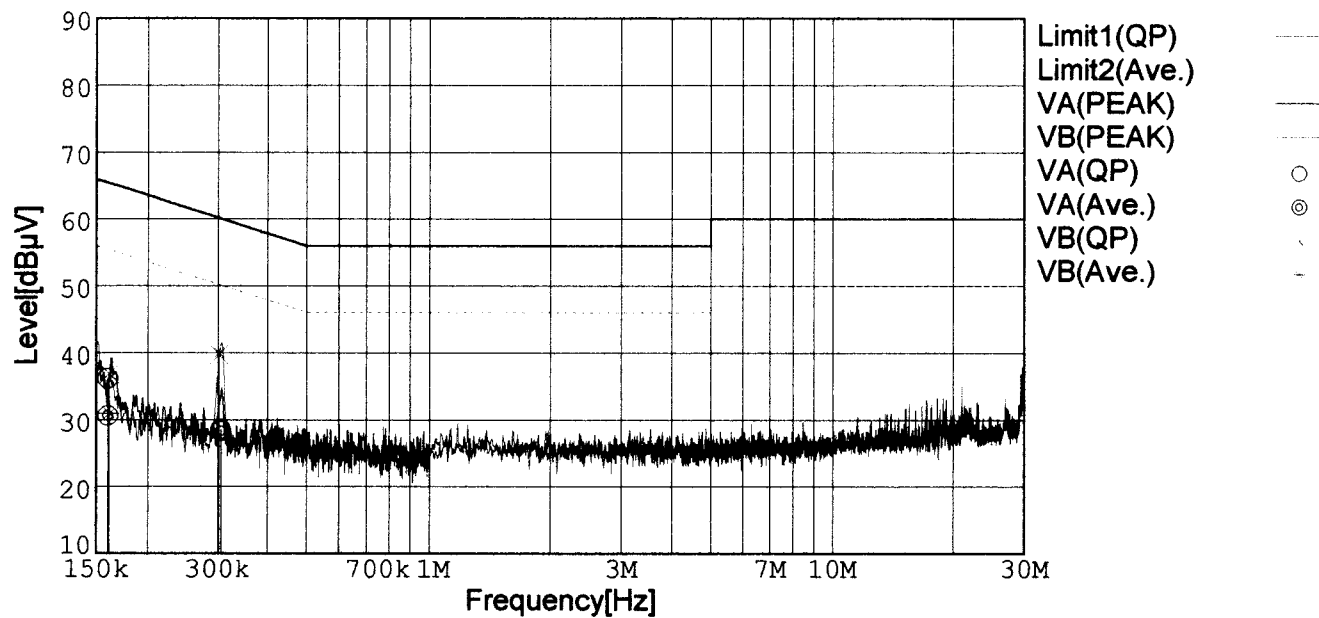
Temp. : 25degC

Humi. : 40%

Date : 2002/7/17 10:25

Test Equip. : R3132,ESPC

Comment : DC 24V, Io=2.1A



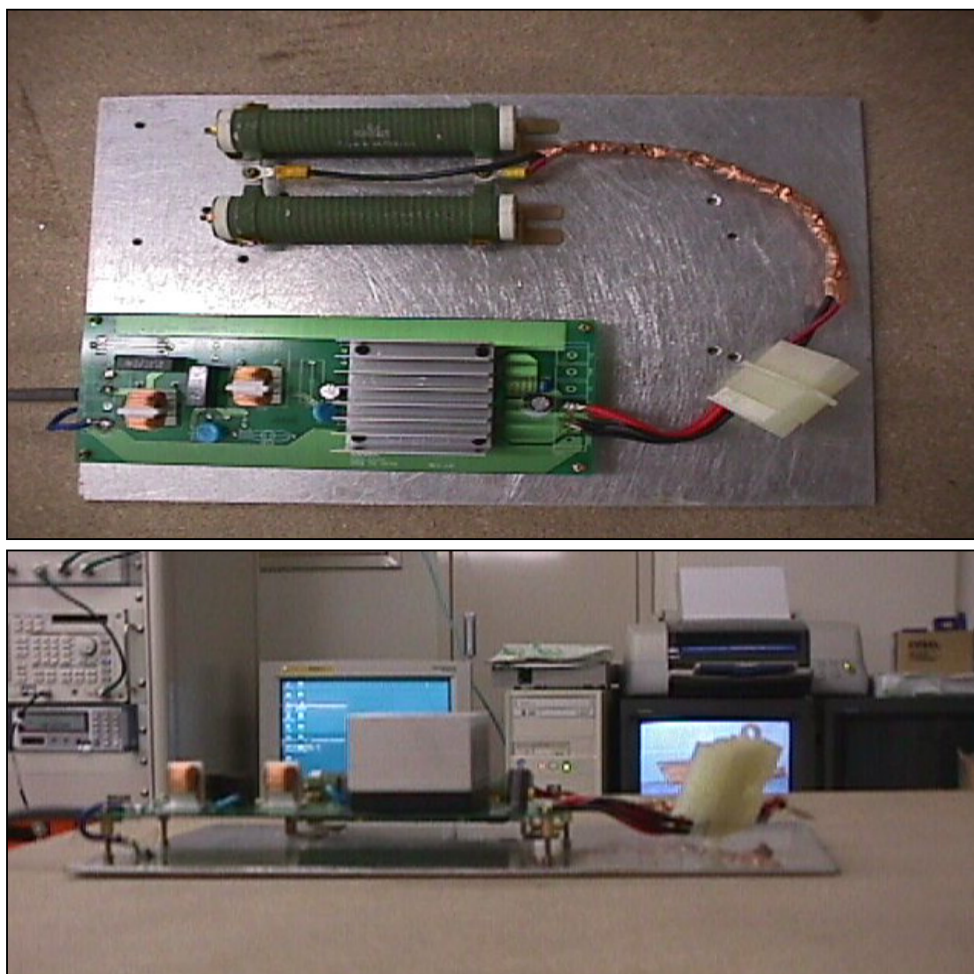
Frequency [MHz]	Meter Reading (QP) [dBμV]	Meter Reading (Ave.) [dBμV]	Factor [dB]	Level (QP) [dBμV]	Level (Ave.) [dBμV]	Line	Limit (QP) [dBμV]	Limit (Ave.) [dBμV]	Margin (QP) [dB]	Margin (Ave.) [dB]
0.1602	26.3	20.8	9.8	36.1	30.6	VA	65.5	55.5	29.4	24.9
0.3054	18.8	18.4	9.8	28.6	28.2	VA	60.1	50.1	31.5	21.9
0.1613	27.1	21.1	9.8	36.9	30.9	VB	65.4	55.4	28.5	24.5
0.3020	29.9	30.2	9.8	39.7	40.0	VB	60.2	50.2	20.5	10.2

Conditions

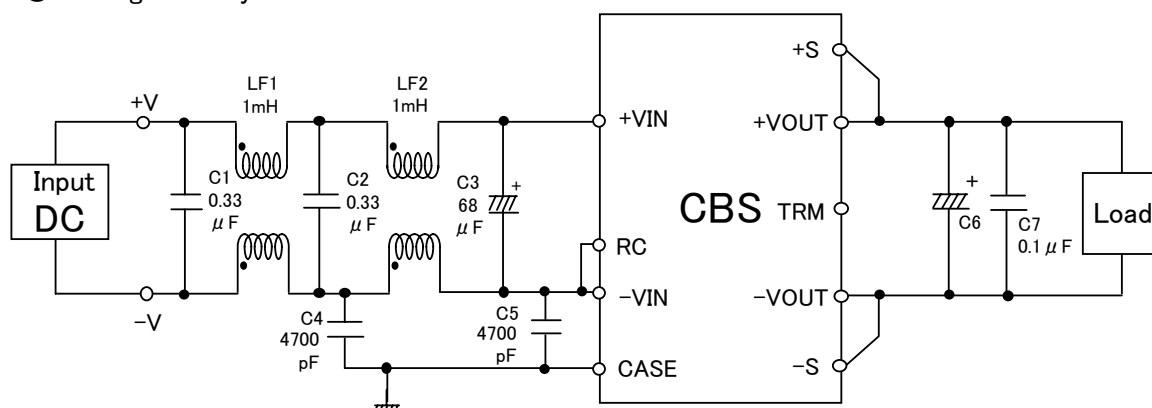
Date 2002/7/19

Test : LINE CONDUCTION
Model Name : CBS502403/15/24

○Photographs of Test Set-Up



○Testing circuitry



- LF1、LF2: SC-05-10J (TOKIN)
- C1、C2 : CFJC22E334M (Nitsuko)
- C3 : 50V 68 μ F PMseries (nichicon)
- C4、C5 : DE1307-640E472M-KH (MURATA)
- C6 : CBS502403 10V 2200 μ F LXZseries (NIPPON CHEMI-CON)
- CBS502415 25V 470 μ F LXZseries (NIPPON CHEMI-CON)
- CBS502424 35V 220 μ F LXZseries (NIPPON CHEMI-CON)
- C7 : MDD21H104M (Nitsuko)

Fig. Testing circuitry