

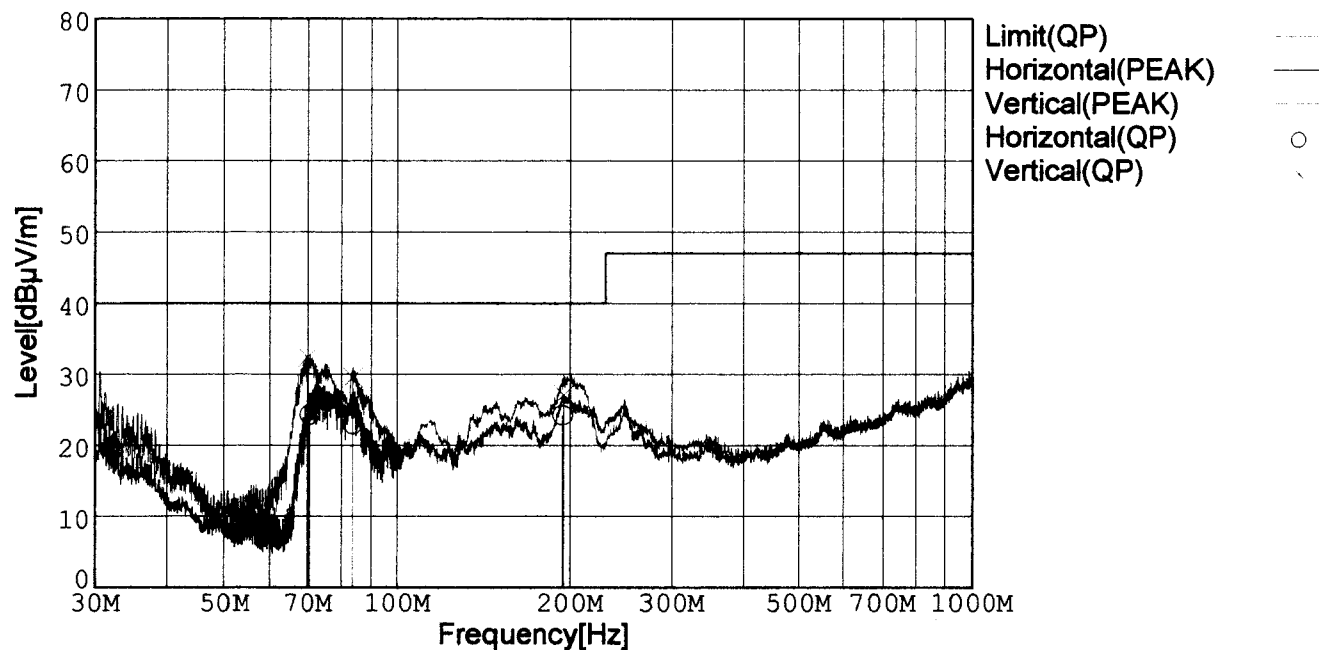


RADIATED EMISSION

Model Name : CBS502412
 Model No. :
 Serial No. :
 Points : 3
 Detector : PEAK/QP
 Polarization : Hori. & Vert.

Tested by : K.Kinoshita
 Temp. : 25degC
 Humi. : 50%
 Date : 2001/8/29 18:25
 Test Equip. : R3132,ESPC
 Comment : DC24V Io=4.2A

Limit: [EN 55022] Class B<3m>



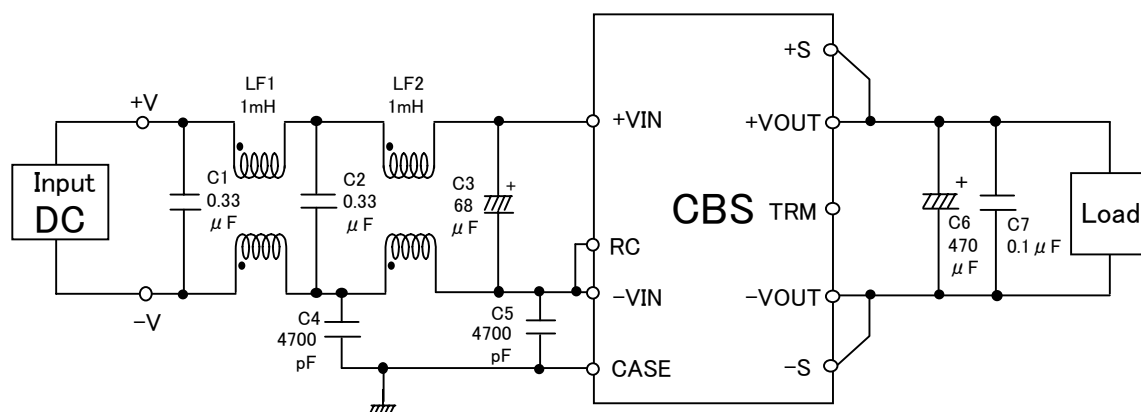
Frequency [MHz]	Meter Reading (QP) [dBμV]	Ant. Type	Antenna Factor [dB/m]	Cable & Preamp [dB]	Level (QP) [dBμV/m]	Angle[°]	Height [cm]	Polar.	Limit [dBμV/m]	Margin [dB]
70.588	50.6	BL	5.5	-31.8	24.3	268	160	Hori.	40.0	15.7
83.663	46.9	BL	7.7	-31.7	22.9	106	160	Hori.	40.0	17.1
194.541	47.0	BL	8.4	-31.2	24.2	253	110	Hori.	40.0	15.8
69.964	58.8	BL	5.4	-31.8	32.4	36	115	Vert.	40.0	7.6
83.682	53.5	BL	7.7	-31.7	29.5	355	139	Vert.	40.0	10.5
195.166	49.9	BL	8.4	-31.2	27.1	170	108	Vert.	40.0	12.9

BL: Biconi-Log

Conditions

Date 2001/8/29

○Testing circuitry



LF1、LF2 : SC-05-10J (TOKIN)
 C1、C2 : CFJC22E334M (Nitsuko)
 C3 : 50V 68 μ F PMseries (nichicon)
 C4、C5 : DE1307-640E472M-KH (MURATA)
 C6 : 25V 470 μ F LXZseries (NIPPON CHEMI-CON)
 C7 : MDD21H104M (Nitsuko)

Fig. Testing circuitry

LINE CONDUCTION

Model Name : CBS502412

Model No. :

Serial No. :

Points : 2

Detector : PEAK/QP/Ave.

Line Mode : VA/VB

Limit1: [EN 55022] Class B(QP)

Limit2: [EN 55022] Class B(Ave.)

Tested by : K.Kinoshita

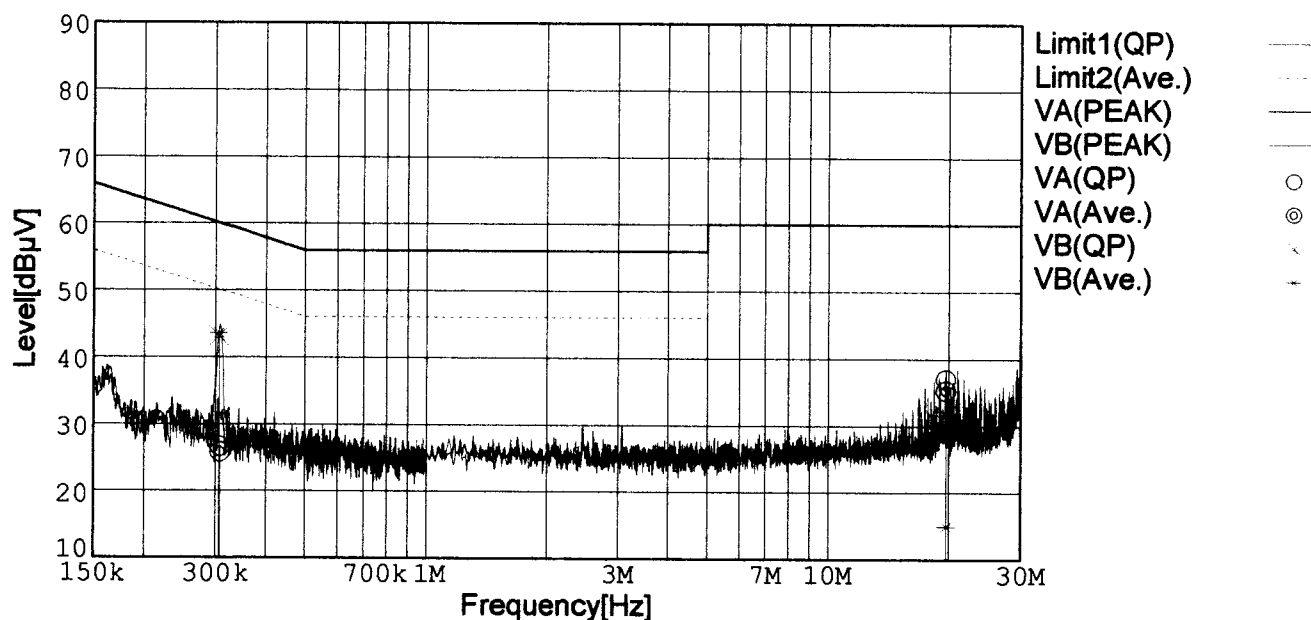
Temp. : 25degC

Humi. : 50%

Date : 2001/8/29 17:43

Test Equip. : R3132,ESPC

Comment : DC24V Io=4.2A

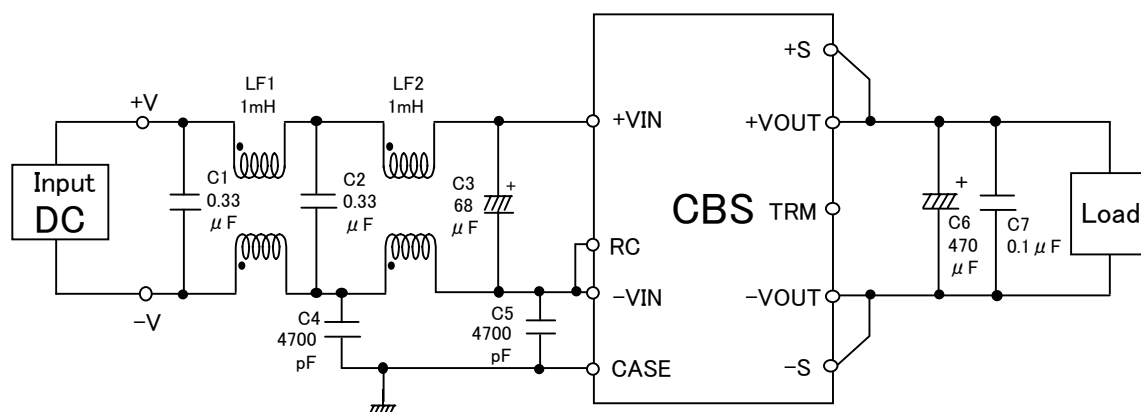


Frequency [MHz]	Meter Reading (QP) [dBμV]	Meter Reading (Ave.) [dBμV]	Factor [dB]	Level (QP) [dBμV]	Level (Ave.) [dBμV]	Line	Limit (QP) [dBμV]	Limit (Ave.) [dBμV]	Margin (QP)[dB]	Margin (Ave.) [dB]
0.3077	16.8	16.0	9.8	26.6	25.8	VA	60.0	50.0	33.4	24.2
19.6622	26.7	25.0	10.3	37.0	35.3	VA	60.0	50.0	23.0	14.7
0.3061	33.4	33.8	9.8	43.2	43.6	VB	60.1	50.1	16.9	6.5
19.6443	21.3	4.7	10.3	31.6	15.0	VB	60.0	50.0	28.4	35.0

Conditions

Date 2001/8/29

○Testing circuitry



- LF1、LF2 : SC-05-10J (TOKIN)
 C1、C2 : CFJC22E334M (Nitsuko)
 C3 : 50V 68 μ F PMseries (nichicon)
 C4、C5 : DE1307-640E472M-KH (MURATA)
 C6 : 25V 470 μ F LXZseries (NIPPON CHEMI-CON)
 C7 : MDD21H104M (Nitsuko)

Fig. Testing circuitry