



RADIATED EMISSION

Model Name : CBS502405

Model No. :

Serial No. :

Points : 3

Detector : PEAK/QP

Polarization : Hori. & Vert.

Power Supply :

Temp. : 25degC

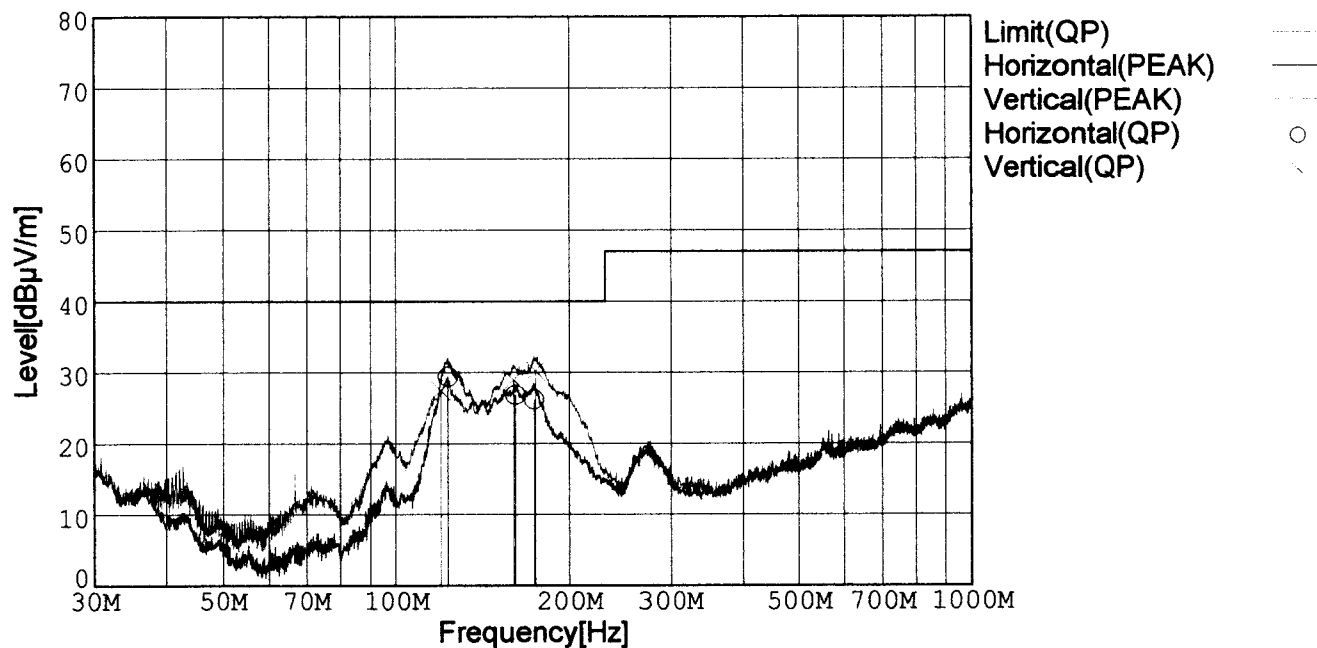
Humi. : 40%

Date : 2002/3/14 15:37

Test Equip. : R3132,ESPC

Comment : DC24V Io=10A

Limit: [EN 55022] Class B<3m>



Frequency [MHz]	Meter Reading (QP) [dBμV]	Ant. Type	Antenna Factor [dB/m]	Cable & Preamp [dB]	Level (QP) [dBμV/m]	Angle[°]	Height [cm]	Polar.	Limit [dBμV/m]	Margin [dB]
122.828	49.9	BL	11.0	-31.5	29.4	98	157	Hori.	40.0	10.6
160.988	48.3	BL	9.8	-31.3	26.8	293	159	Hori.	40.0	13.2
173.575	48.8	BL	8.7	-31.3	26.2	113	150	Hori.	40.0	13.8
119.286	48.1	BL	10.9	-31.5	27.5	357	119	Vert.	40.0	12.5
159.805	50.3	BL	9.9	-31.3	28.9	260	154	Vert.	40.0	11.1
174.365	52.9	BL	8.6	-31.3	30.2	58	121	Vert.	40.0	9.8

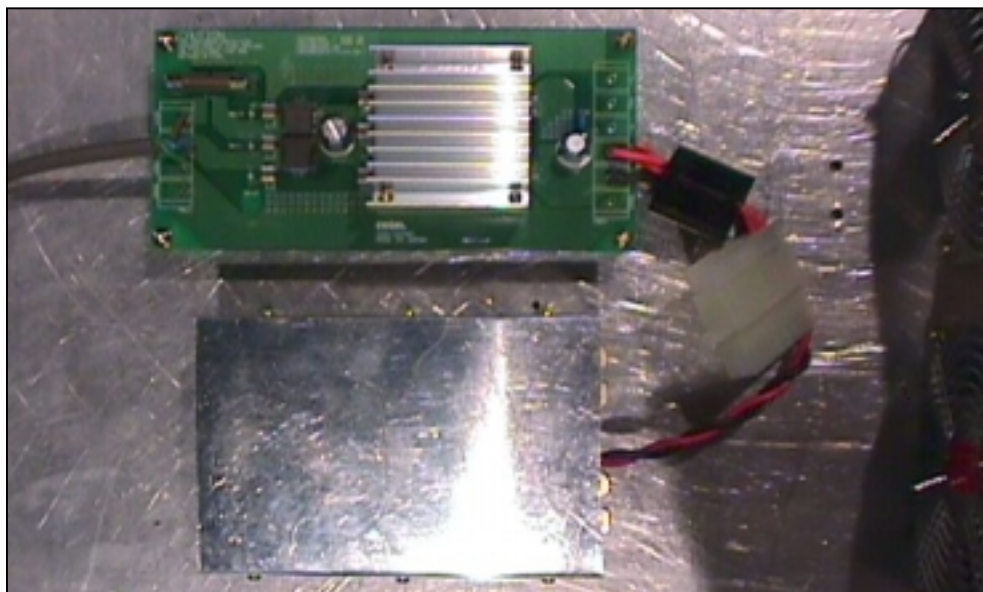
BL: Biconi-Log

Conditions

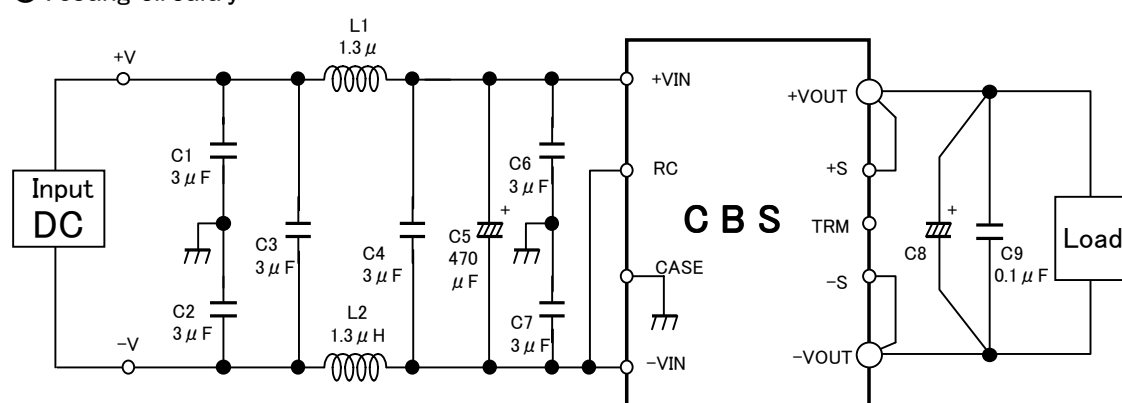
Date 2002/3/14

Test : RADIATED EMISSION
Model Name : CBS502405

○Photographs of Test Set-Up



○Testing circuitry



L1, L2 : ETQP6F1R3LFA (MATSUSHITA)
C1, C2, C3, C4, C6, C7 : CY55Y5P2A305M (TOKIN)
C5 : 50V 470 μ F PMseries (nichicon)
C8 : 10V 2200 μ F LXZseries (NIPPON CHEMI-CON)
C9 : MDD21H104M (Nitsuko)

Fig. Testing circuitry

LINE CONDUCTION

Model Name : CBS502405

Model No. :

Serial No. :

Points : 4

Detector : PEAK/QP/Ave.

Line Mode : VA/VB

Limit1: [EN 55022] Class B(QP)

Limit2: [EN 55022] Class B(Ave.)

Power Supply :

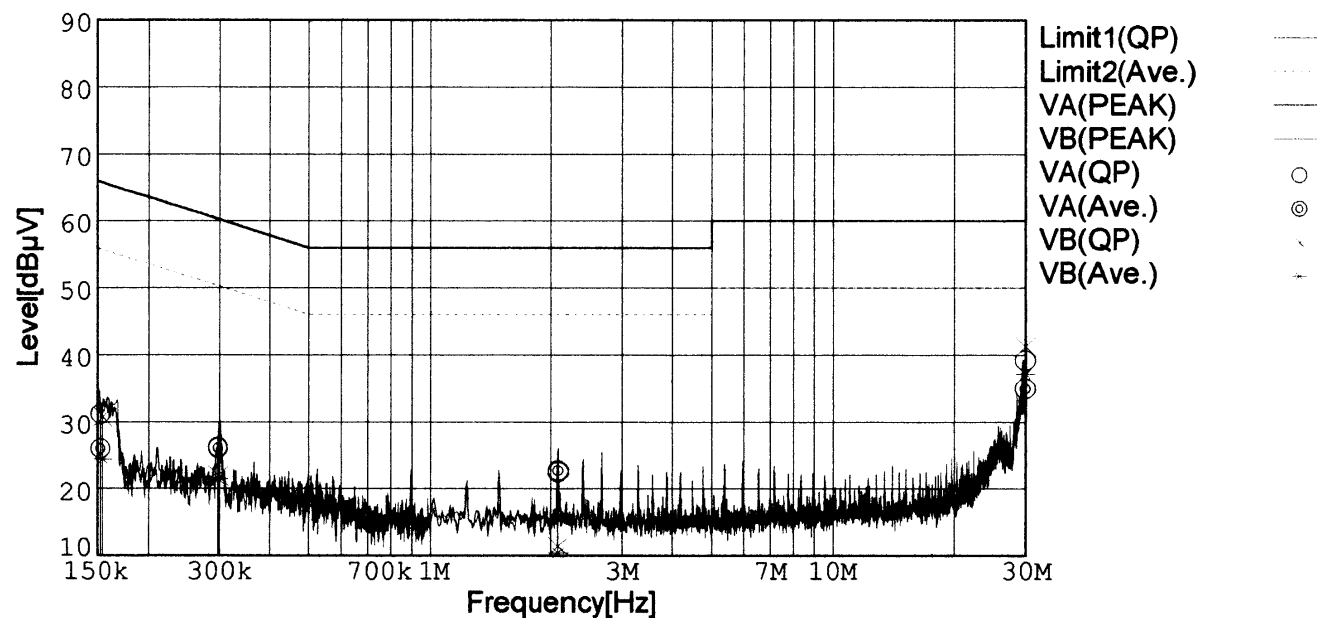
Temp. : 25degC

Humi. : 40%

Date : 2002/3/14 15:11

Test Equip. : R3132,ESPC

Comment : DC24V Io=10A



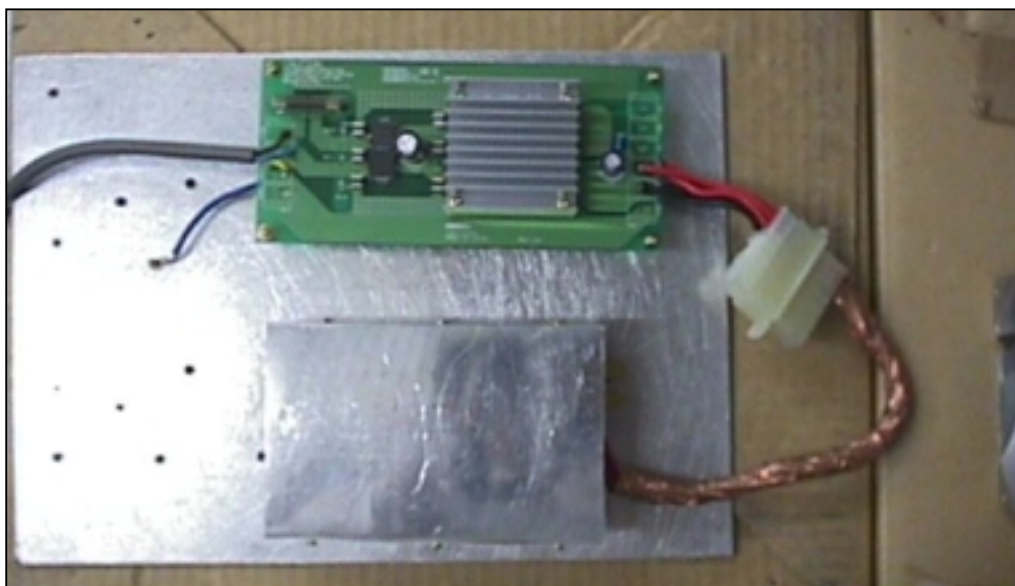
Frequency [MHz]	Meter Reading (QP) [dBμV]	Meter Reading (Ave.) [dBμV]	Factor [dB]	Level (QP) [dBμV]	Level (Ave.) [dBμV]	Line	Limit (QP) [dBμV]	Limit (Ave.) [dBμV]	Margin (QP)[dB]	Margin (Ave.) [dB]
0.1528	21.3	16.2	9.8	31.1	26.0	VA	65.9	55.9	34.8	29.9
0.2974	16.4	16.3	9.8	26.2	26.1	VA	60.3	50.3	34.1	24.2
2.0859	12.5	12.8	9.9	22.4	22.7	VA	56.0	46.0	33.6	23.3
29.9971	28.8	24.6	10.4	39.2	35.0	VA	60.0	50.0	20.8	15.0
0.1548	20.9	14.6	9.8	30.7	24.4	VB	65.7	55.7	35.0	31.3
0.2979	12.1	11.7	9.8	21.9	21.5	VB	60.3	50.3	38.4	28.8
2.0859	1.5	0.5	9.9	11.4	10.4	VB	56.0	46.0	44.6	35.6
29.9989	30.9	26.8	10.4	41.3	37.2	VB	60.0	50.0	18.7	12.8

Conditions

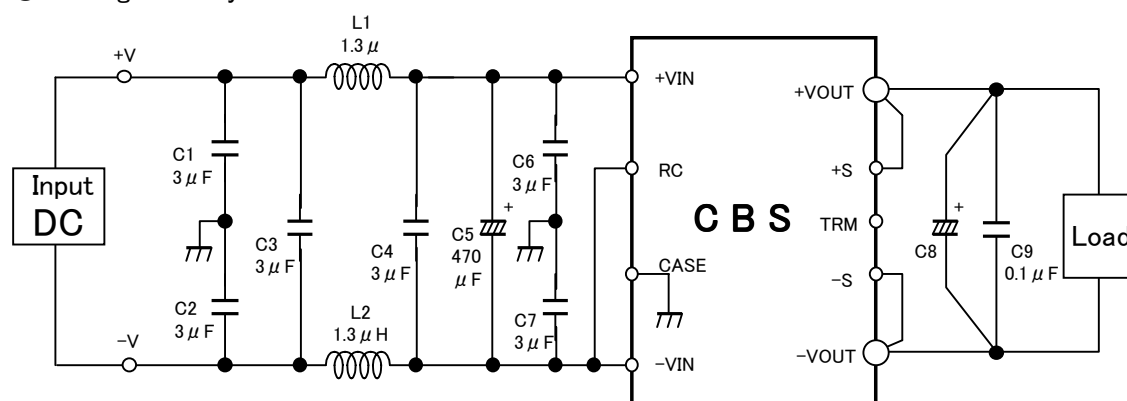
Date 2002/3/14

Test : LINE CONDUCTION
 Model Name : CBS502405

○Photographs of Test Set-Up



○Testing circuitry



L1, L2 : ETQP6F1R3LFA (MATSUSHITA)
 C1, C2, C3, C4, C6, C7 : CY55Y5P2A305M (TOKIN)
 C5 : 50V 470 μ F PMseries (nichicon)
 C8 : 10V 2200 μ F LXZseries (NIPPON CHEMI-CON)
 C9 : MDD21H104M (Nitsuko)

Fig. Testing circuitry