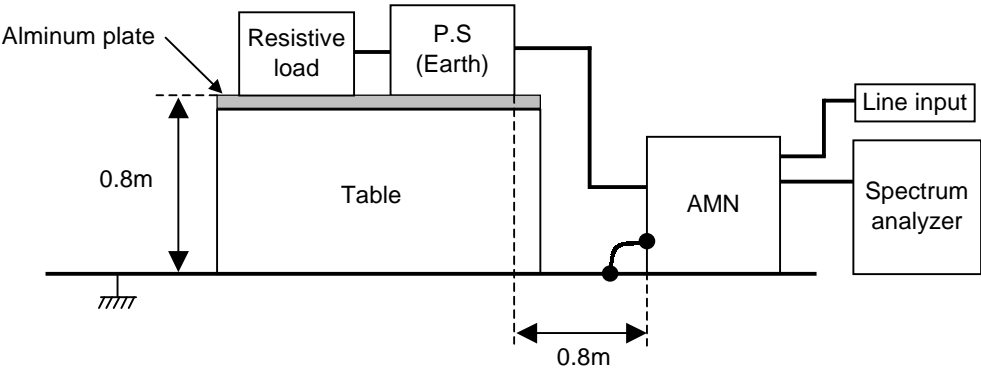


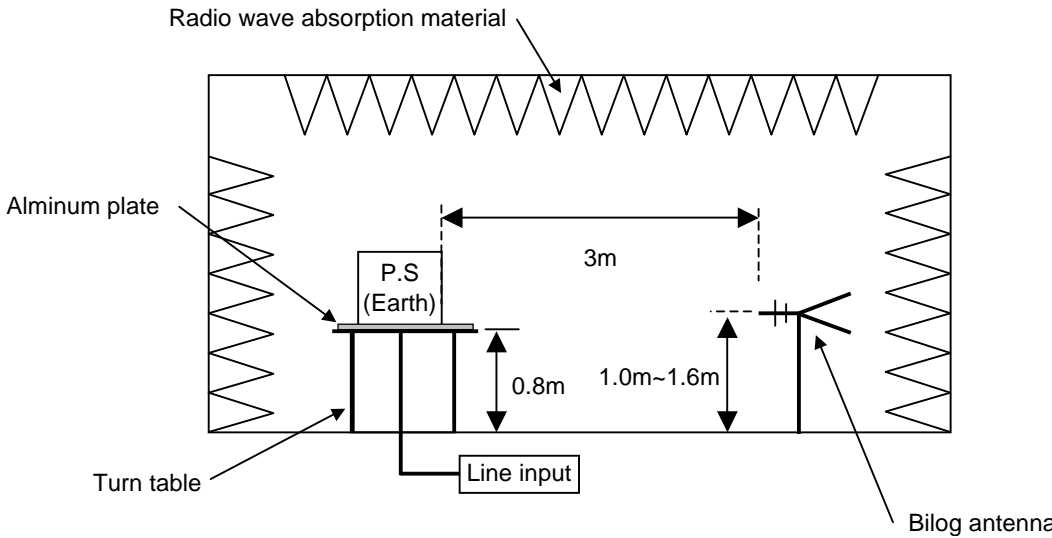
DATA SHEET							Date	19-Aug-08																																																																				
Model	CBS4504832						Temp.	25 degreeC																																																																				
Test	EMI Line conduction & Radiated emission						Humid.	48 %RH																																																																				
							Tested by	T.Mori																																																																				
LINE CONDUCTION																																																																												
Model Name : CBS4504832			Temp. : 25																																																																									
Model No. :			Humi. : 48																																																																									
Serial No. :			Date : 2008/8/19 20:47																																																																									
Points : 4			Test Equip. : R3132,ESPC																																																																									
Detector : PEAK/QP/Ave.			Load Line : 100mm																																																																									
Line Mode : VA/VB			Comment : T.Mori																																																																									
Power Supply : DC48V																																																																												
Limit1: [EN 55022] Class A(QP)																																																																												
Limit2: [EN 55022] Class A(Ave.)																																																																												
							Limit1(QP) Limit2(Ave.) VA(PEAK) VB(PEAK) VA(QP) VA(Ave.) VB(QP) VB(Ave.)																																																																					
							DC48V Load 100%(+32V12.5A)																																																																					
<table><tr><th>Frequency [MHz]</th><th>Meter Reading (Ave.) [dBμV]</th><th>Meter Reading (QP) [dBμV]</th><th>Factor [dB]</th><th>Level(Ave.) [dBμV]</th><th>Level(QP) [dBμV]</th><th>Line</th><th>Limit(Ave.) [dBμV]</th><th>Limit(QP) [dBμV]</th><th>Margin(Ave.) [dB]</th><th>Margin(QP) [dB]</th></tr><tr><td>20.4591</td><td>18.3</td><td>24.6</td><td>10.3</td><td>28.6</td><td>34.9</td><td>VA</td><td>60</td><td>73</td><td>31.4</td><td>38.1</td></tr><tr><td>0.3782</td><td>33</td><td>41.8</td><td>9.9</td><td>42.9</td><td>51.7</td><td>VB</td><td>66</td><td>79</td><td>23.1</td><td>27.3</td></tr><tr><td>6.8741</td><td>46.6</td><td>46.5</td><td>10</td><td>56.6</td><td>56.5</td><td>VB</td><td>60</td><td>73</td><td>3.4</td><td>16.5</td></tr><tr><td>21.0087</td><td>48.3</td><td>49.2</td><td>10.3</td><td>58.6</td><td>59.5</td><td>VB</td><td>60</td><td>73</td><td>1.4</td><td>13.5</td></tr></table>											Frequency [MHz]	Meter Reading (Ave.) [dBμV]	Meter Reading (QP) [dBμV]	Factor [dB]	Level(Ave.) [dBμV]	Level(QP) [dBμV]	Line	Limit(Ave.) [dBμV]	Limit(QP) [dBμV]	Margin(Ave.) [dB]	Margin(QP) [dB]	20.4591	18.3	24.6	10.3	28.6	34.9	VA	60	73	31.4	38.1	0.3782	33	41.8	9.9	42.9	51.7	VB	66	79	23.1	27.3	6.8741	46.6	46.5	10	56.6	56.5	VB	60	73	3.4	16.5	21.0087	48.3	49.2	10.3	58.6	59.5	VB	60	73	1.4	13.5											
Frequency [MHz]	Meter Reading (Ave.) [dBμV]	Meter Reading (QP) [dBμV]	Factor [dB]	Level(Ave.) [dBμV]	Level(QP) [dBμV]	Line	Limit(Ave.) [dBμV]	Limit(QP) [dBμV]	Margin(Ave.) [dB]	Margin(QP) [dB]																																																																		
20.4591	18.3	24.6	10.3	28.6	34.9	VA	60	73	31.4	38.1																																																																		
0.3782	33	41.8	9.9	42.9	51.7	VB	66	79	23.1	27.3																																																																		
6.8741	46.6	46.5	10	56.6	56.5	VB	60	73	3.4	16.5																																																																		
21.0087	48.3	49.2	10.3	58.6	59.5	VB	60	73	1.4	13.5																																																																		
RADIATED EMISSION																																																																												
Model Name : CBS4504832			Temp. : 25																																																																									
Model No. :			Humi. : 45																																																																									
Serial No. :			Date : 2008/8/19 20:03																																																																									
Points : 5			Test Equip. : R3132,ESPC																																																																									
Detector : PEAK/QP			Load Line : 100mm																																																																									
Polarization : Hori. & Vert.			Comment : T.Mori																																																																									
Power Supply : DC48V																																																																												
Limit: [EN 55022] Class A<3m>																																																																												
							Limit(QP) Horizontal(PEAK) Vertical(PEAK) Horizontal(QP) Vertical(QP)																																																																					
							DC48V Load 100%(+32V12.5A)																																																																					
<table><tr><th>Frequency [MHz]</th><th>MeterReading (QP) [dBμV]</th><th>Ant. Type</th><th>Antenna Factor [dB/m]</th><th>Cable &amp; Preamp [dB]</th><th>Level(QP) [dBμV/m]</th><th>Angle [°]</th><th>Height [cm]</th><th>Polar.</th><th>Limit [dBμV/m]</th><th>Margin [dB]</th></tr><tr><td>103.911</td><td>65.1</td><td>BL</td><td>10.1</td><td>-31.7</td><td>43.5</td><td>24</td><td>138</td><td>Hori.</td><td>50</td><td>6.5</td></tr><tr><td>30.717</td><td>61.1</td><td>BL</td><td>17.9</td><td>-32.3</td><td>46.7</td><td>256</td><td>100</td><td>Vert.</td><td>50</td><td>3.3</td></tr><tr><td>41.954</td><td>65.5</td><td>BL</td><td>11.9</td><td>-32.2</td><td>45.2</td><td>268</td><td>100</td><td>Vert.</td><td>50</td><td>4.8</td></tr><tr><td>94.209</td><td>66.7</td><td>BL</td><td>9.2</td><td>-31.8</td><td>44.1</td><td>284</td><td>120</td><td>Vert.</td><td>50</td><td>5.9</td></tr><tr><td>103.989</td><td>63.4</td><td>BL</td><td>10.1</td><td>-31.7</td><td>41.8</td><td>268</td><td>104</td><td>Vert.</td><td>50</td><td>8.2</td></tr></table>											Frequency [MHz]	MeterReading (QP) [dBμV]	Ant. Type	Antenna Factor [dB/m]	Cable & Preamp [dB]	Level(QP) [dBμV/m]	Angle [°]	Height [cm]	Polar.	Limit [dBμV/m]	Margin [dB]	103.911	65.1	BL	10.1	-31.7	43.5	24	138	Hori.	50	6.5	30.717	61.1	BL	17.9	-32.3	46.7	256	100	Vert.	50	3.3	41.954	65.5	BL	11.9	-32.2	45.2	268	100	Vert.	50	4.8	94.209	66.7	BL	9.2	-31.8	44.1	284	120	Vert.	50	5.9	103.989	63.4	BL	10.1	-31.7	41.8	268	104	Vert.	50	8.2
Frequency [MHz]	MeterReading (QP) [dBμV]	Ant. Type	Antenna Factor [dB/m]	Cable & Preamp [dB]	Level(QP) [dBμV/m]	Angle [°]	Height [cm]	Polar.	Limit [dBμV/m]	Margin [dB]																																																																		
103.911	65.1	BL	10.1	-31.7	43.5	24	138	Hori.	50	6.5																																																																		
30.717	61.1	BL	17.9	-32.3	46.7	256	100	Vert.	50	3.3																																																																		
41.954	65.5	BL	11.9	-32.2	45.2	268	100	Vert.	50	4.8																																																																		
94.209	66.7	BL	9.2	-31.8	44.1	284	120	Vert.	50	5.9																																																																		
103.989	63.4	BL	10.1	-31.7	41.8	268	104	Vert.	50	8.2																																																																		

DATA SHEET		Date	19-Aug-08
Model	Circuit used for measurement	Temp.	25 degreeC
Test	EMI Line conduction & Radiated emission	Humid.	48 %RH
		Tested by	T.Mori

1. Line conduction

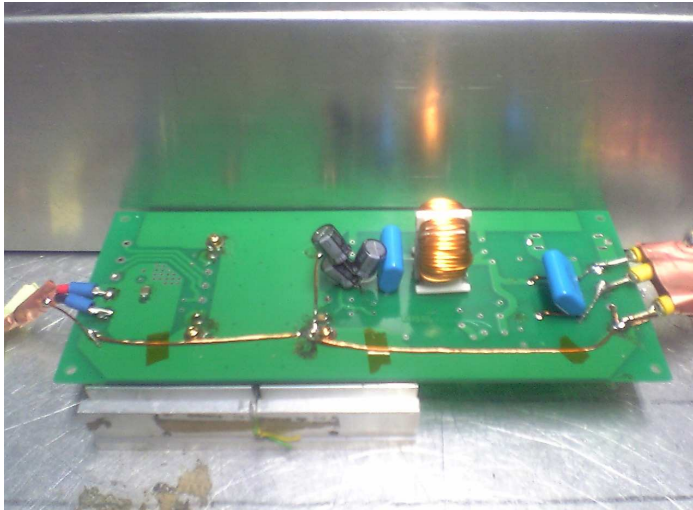


2. Radiated emission

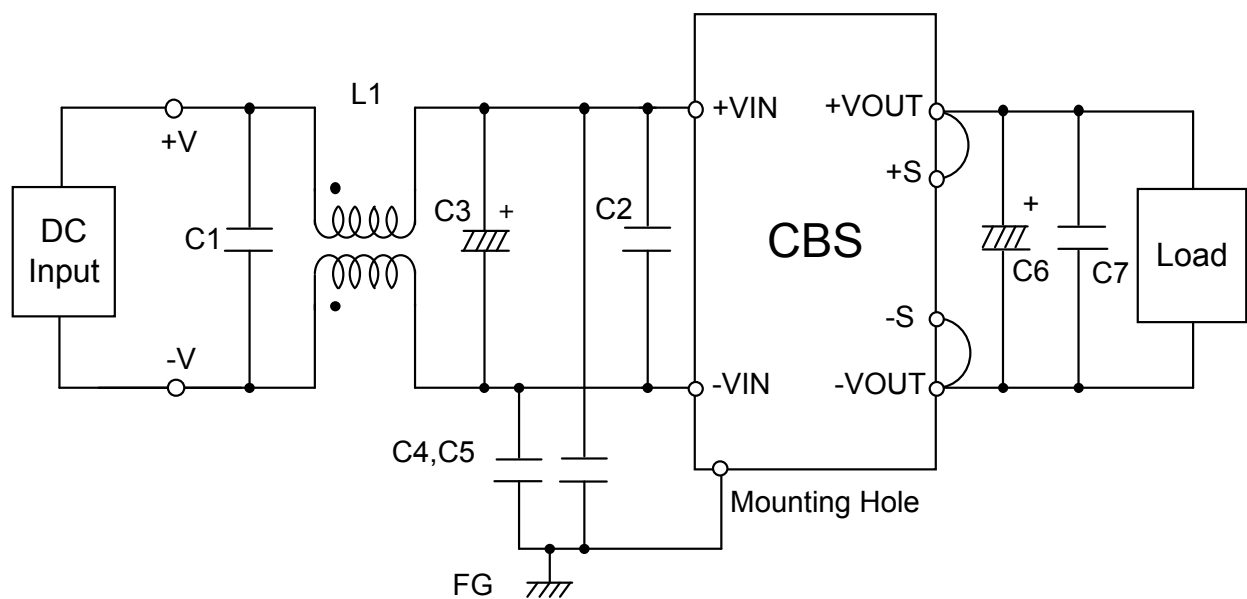


Date 2008/8/19

- Photographs of Test Set-Up



- Testing circuitry



- L1 : 1mH 10A Inductor  
C1,2 : 3.3 $\mu$ F Film capacitor  
C3 : 100V 68 $\mu$ F Electric capacitor  $\times$  2  
C4,5 : 630V 0.068 $\mu$ F Ceramic capacitor  
C6 : 50V 220 $\mu$ F Electric capacitor  
C7 : 50V 0.1 $\mu$ F Ceramic capacitor

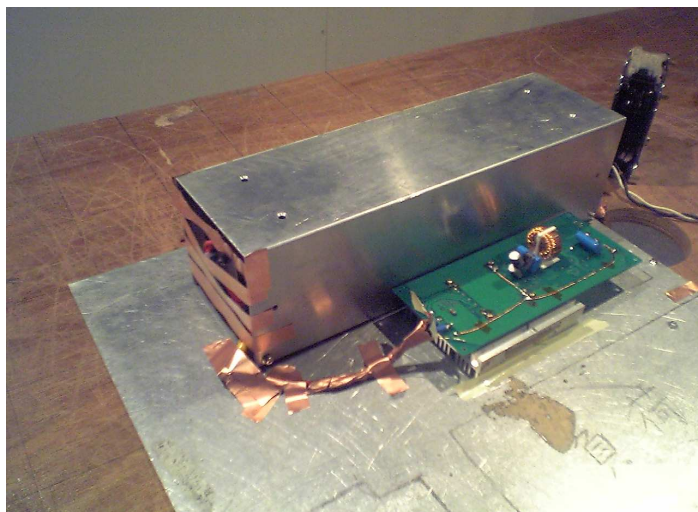


TEST : RADIATED EMISSION

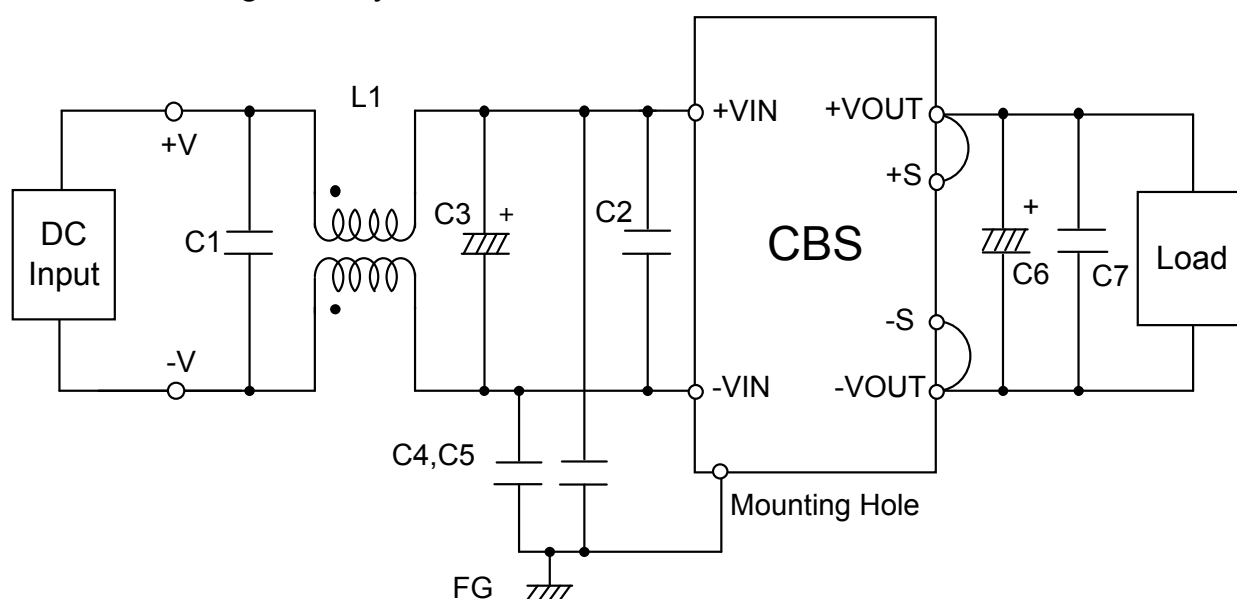
Model Name : CBS45048

Date 2008/8/19

○ Photographs of Test Set-Up



○ Testing circuitry



- L1 : 1mH 10A Inductor
- C1,2 : 3.3 $\mu$ F Film capacitor
- C3 : 100V 68 $\mu$ F Electric capacitor  $\times$  2
- C4,5 : 630V 0.068 $\mu$ F Ceramic capacitor
- C6 : 50V 220 $\mu$ F Electric capacitor
- C7 : 50V 0.1 $\mu$ F Ceramic capacitor