



# RADIATED EMISSION

Model Name : CBS2004812

Model No. :

Serial No. :

Points : 2

Detector : PEAK/QP

Polarization : Hori. & Vert.

Limit: [EN 55022] Class B<3m>

Tested by : K.Kinoshita

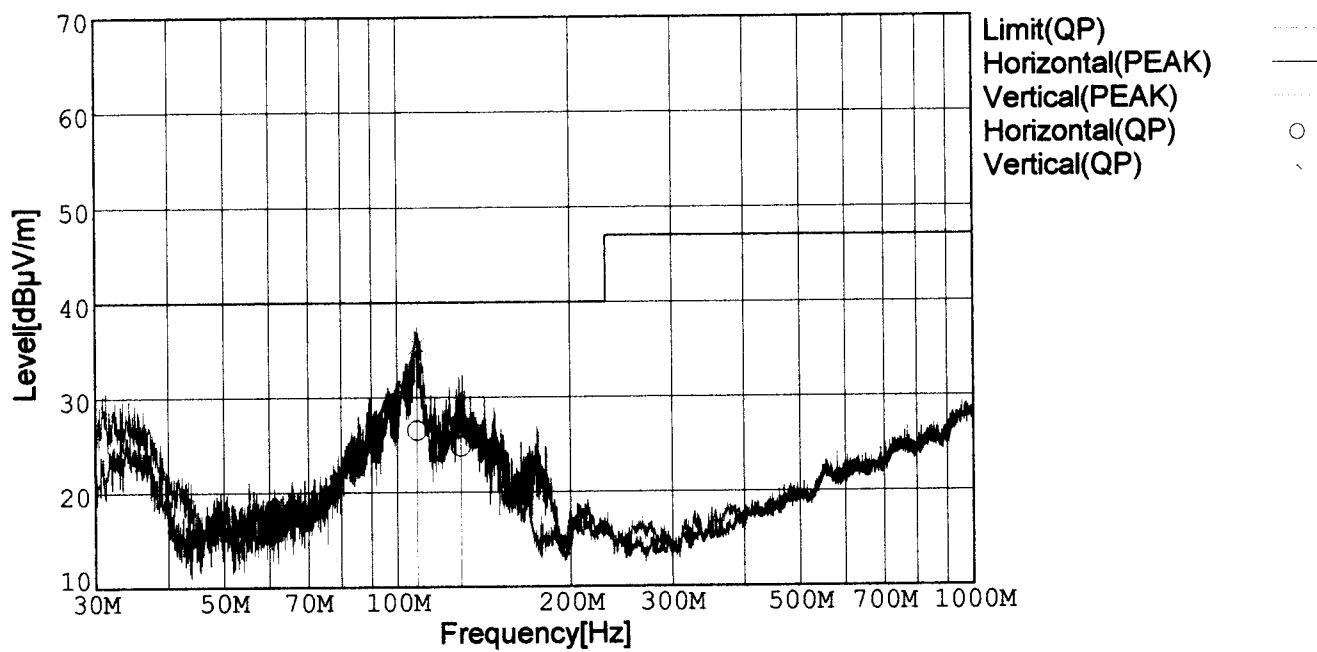
Temp. : 25degC

Humi. : 40%

Date : 2001/2/24 16:27

Test Equip. : R3132,ESPC

Comment : DC48V Io=16.7A



Frequency [MHz]	Meter Reading (QP) [dBμV]	Ant. Type	Antenna Factor [dB/m]	Cable & Preamp [dB]	Level (QP) [dBμV/m]	Angle[°]	Height [cm]	Polar.	Limit [dBμV/m]	Margin [dB]
108.571	56.4	BL	10.6	-31.5	35.5	347	140	Vert.	40.0	4.5
128.908	47.2	BL	11.2	-31.5	26.9	250	152	Vert.	40.0	13.1
108.541	47.4	BL	10.6	-31.5	26.5	82	153	Hori.	40.0	13.5
129.006	45.1	BL	11.2	-31.5	24.8	351	129	Hori.	40.0	15.2

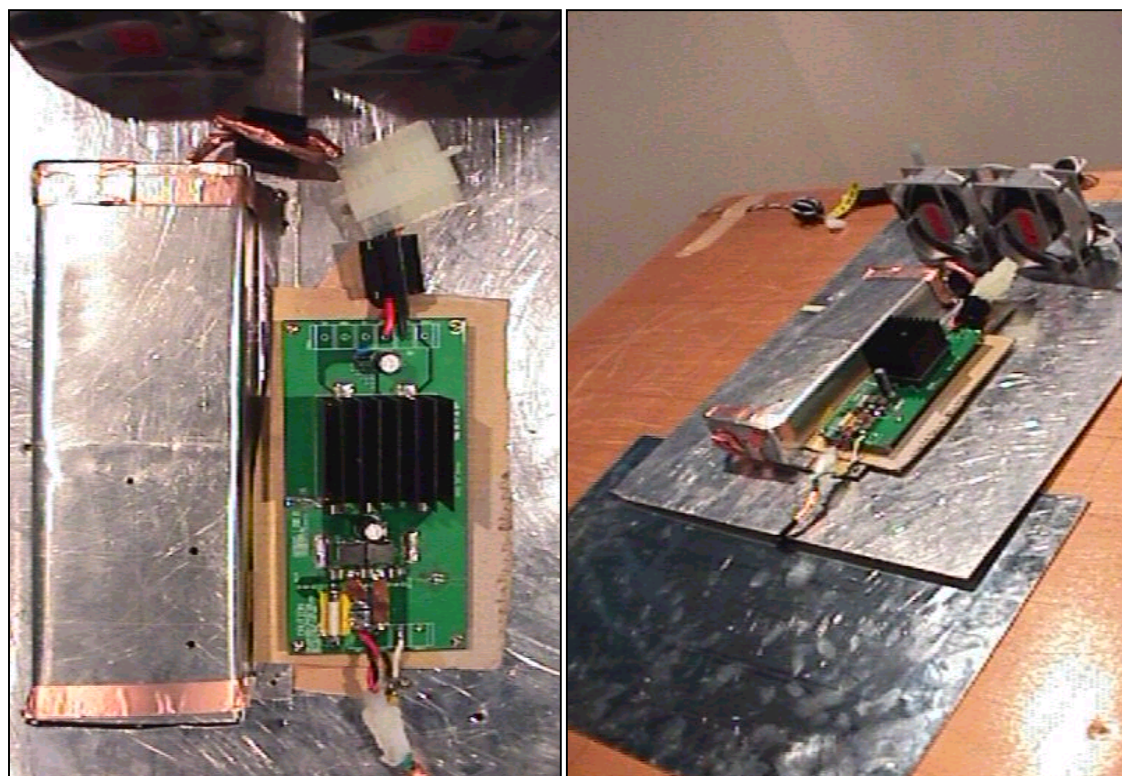
BL: Biconi-Log

## Conditions

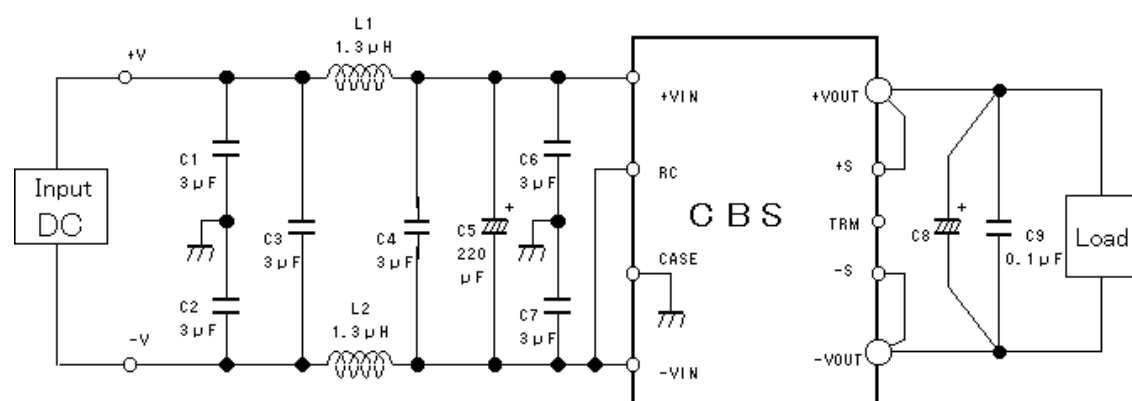
Date 2001/3/7

Test : RADIATED EMISSION  
 Model Name : CBS20048

## ○Photographs of Test Set-Up



## ○Testing circuitry



L1, L2 : ETQP6F1R3LFA (MATSUSHITA)  
 C1, C2, C3, C4, C6, C7 : CY55Y6P2A305M(TOKIN)  
 C5 : 80V 220 $\mu$ F PFseries (nichicon)  
 C8 : CBS2004805 10V 2200 $\mu$ F LXZseries (NIPPON CHEMI-CON)  
       CBS2004812 25V 1000 $\mu$ F LXZseries (NIPPON CHEMI-CON)  
       CBS2004828 35V 470 $\mu$ F LXZseries (NIPPON CHEMI-CON)  
 C9 : MDD21H104M (Nitsuko)

Fig. Testing circuitry



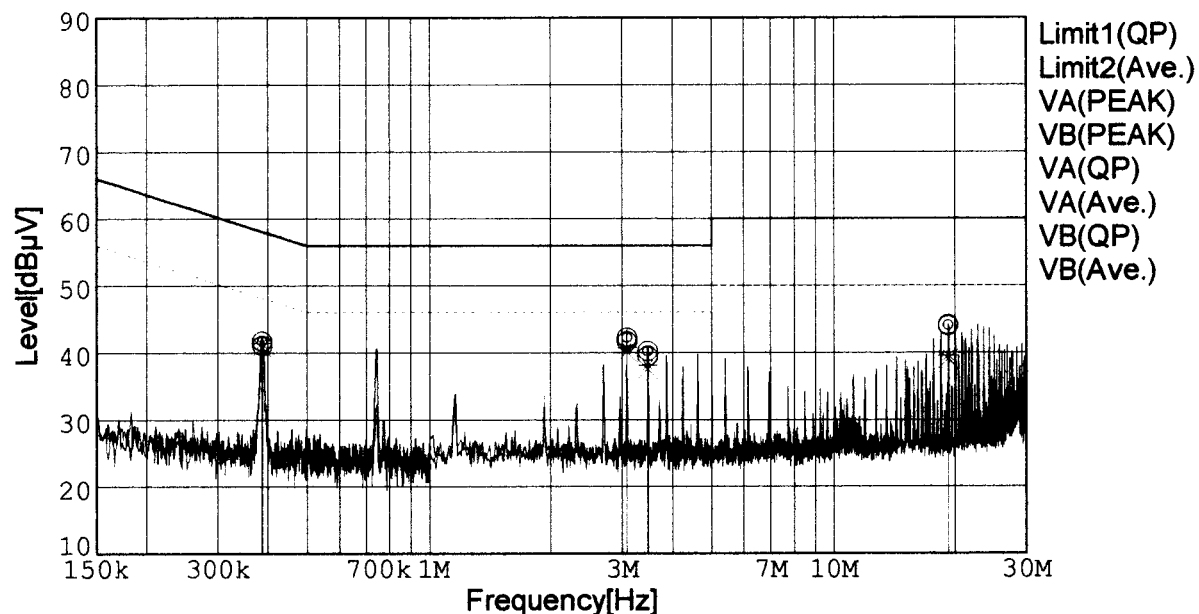
# LINE CONDUCTION

Model Name : CBS2004812  
 Model No. :  
 Serial No. :  
 Points : 4  
 Detector : PEAK/QP/Ave.  
 Line Mode : VA/VB

Tested by : K.Kinoshita  
 Temp. : 25degC  
 Humi. : 40%  
 Date : 2001/2/24 15:14  
 Test Equip. : R3132,ESPC  
 Comment : DC48V Io=16.7A

Limit1: [EN 55022] Class B(QP)

Limit2: [EN 55022] Class B(Ave.)



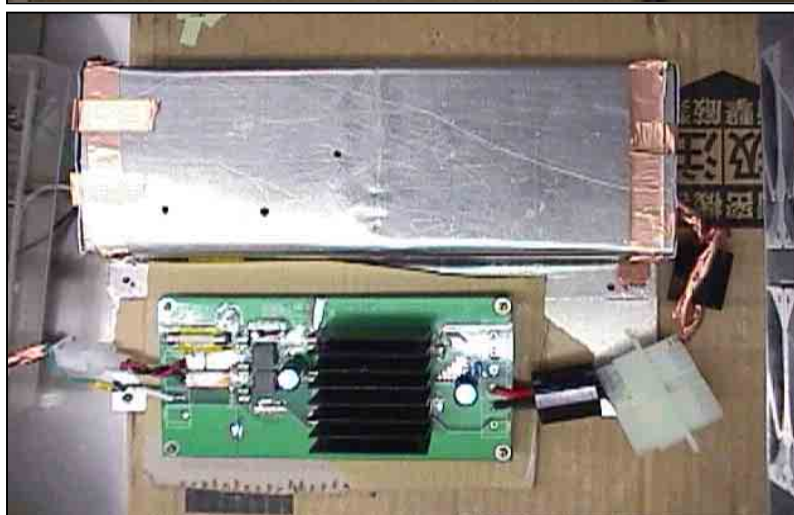
Frequency [MHz]	Meter Reading (QP) [dBμV]	Meter Reading (Ave.) [dBμV]	Factor [dB]	Level (QP) [dBμV]	Level (Ave.) [dBμV]	Line	Limit (QP) [dBμV]	Limit (Ave.) [dBμV]	Margin (QP)[dB]	Margin (Ave.) [dB]
0.3873	31.3	31.9	9.8	41.1	41.7	VA	58.1	48.1	17.0	6.4
3.0890	31.7	32.3	9.9	41.6	42.2	VA	56.0	46.0	14.4	3.8
3.4690	29.6	30.3	9.9	39.5	40.2	VA	56.0	46.0	16.5	5.8
19.2519	33.7	33.8	10.3	44.0	44.1	VA	60.0	50.0	16.0	5.9
0.3862	31.0	31.6	9.8	40.8	41.4	VB	58.2	48.2	17.4	6.8
3.0859	30.2	30.8	9.9	40.1	40.7	VB	56.0	46.0	15.9	5.3
3.4673	27.6	28.2	9.9	37.5	38.1	VB	56.0	46.0	18.5	7.9
19.2453	28.7	29.2	10.3	39.0	39.5	VB	60.0	50.0	21.0	10.5

# Conditions

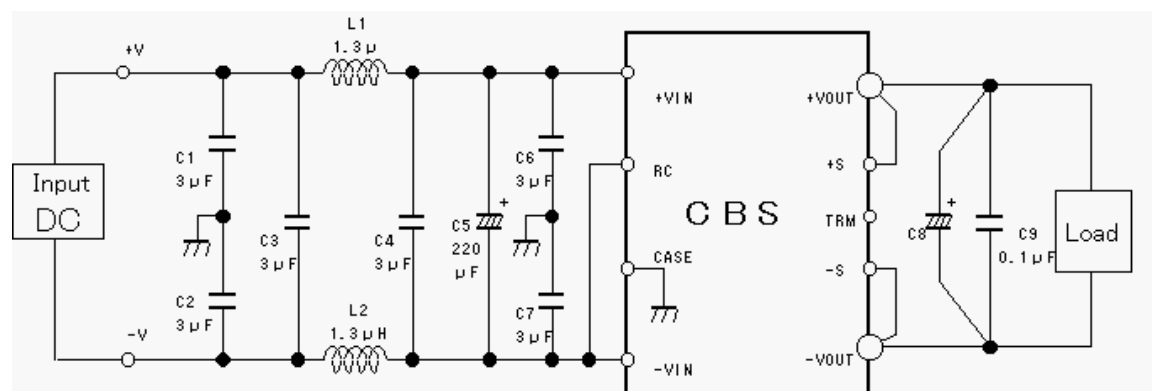
Date 2001/3/7

Test : LINE CONDUCTION  
Model Name : CBS20048

## Photographs of Test Set-Up



## Testing circuitry



L1, L2 : ETQP6F1R3LFA (MATSUSHITA)  
C1, C2, C3, C4, C6, C7 : CY55Y5P2A305M(TOKIN)  
C5 : 80V 220 $\mu$ F PFseries (nichicon)  
C8 : CBS2004805 10V 2200 $\mu$ F LXZseries (NIPPON CHEMI-CON)  
CBS2004812 25V 1000 $\mu$ F LXZseries (NIPPON CHEMI-CON)  
CBS2004828 35V 470 $\mu$ F LXZseries (NIPPON CHEMI-CON)  
C9 : MDD21H104M (Nitsuko)

Fig. Testing circuitry