

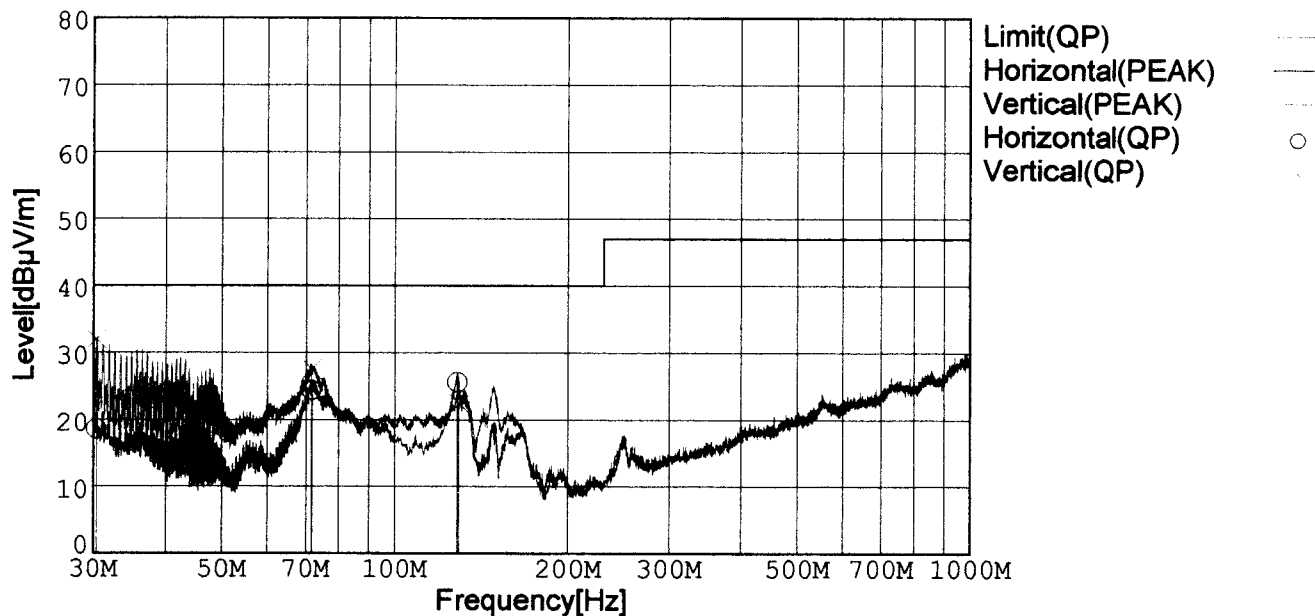


# RADIATED EMISSION

Model Name : CBS2002405  
 Model No. :  
 Serial No. :  
 Points : 3  
 Detector : PEAK/QP  
 Polarization : Hori. & Vert.  
 Power Supply : DC 24V

Temp. : 25degC  
 Humi. : 40%  
 Date : 2002/3/12 16:27  
 Test Equip. : R3132,ESPC  
 Comment : Vo=5V, Io=30A  
 Tested by : T.Oiwake

Limit: [EN 55022] Class B<3m>



Frequency [MHz]	Meter Reading (QP) [dBμV]	Ant. Type	Antenna Factor [dB/m]	Cable & Preamp [dB]	Level (QP) [dBμV/m]	Angle[°]	Height [cm]	Polar.	Limit [dBμV/m]	Margin [dB]
30.367	32.7	BL	18.0	-32.1	18.6	111	128	Hori.	40.0	21.4
71.643	50.4	BL	5.7	-31.8	24.3	210	157	Hori.	40.0	15.7
128.218	45.9	BL	11.2	-31.5	25.6	254	147	Hori.	40.0	14.4
30.373	46.1	BL	18.0	-32.1	32.0	231	101	Vert.	40.0	8.0
71.630	53.6	BL	5.7	-31.8	27.5	196	124	Vert.	40.0	12.5
128.960	42.7	BL	11.2	-31.5	22.4	296	155	Vert.	40.0	17.6

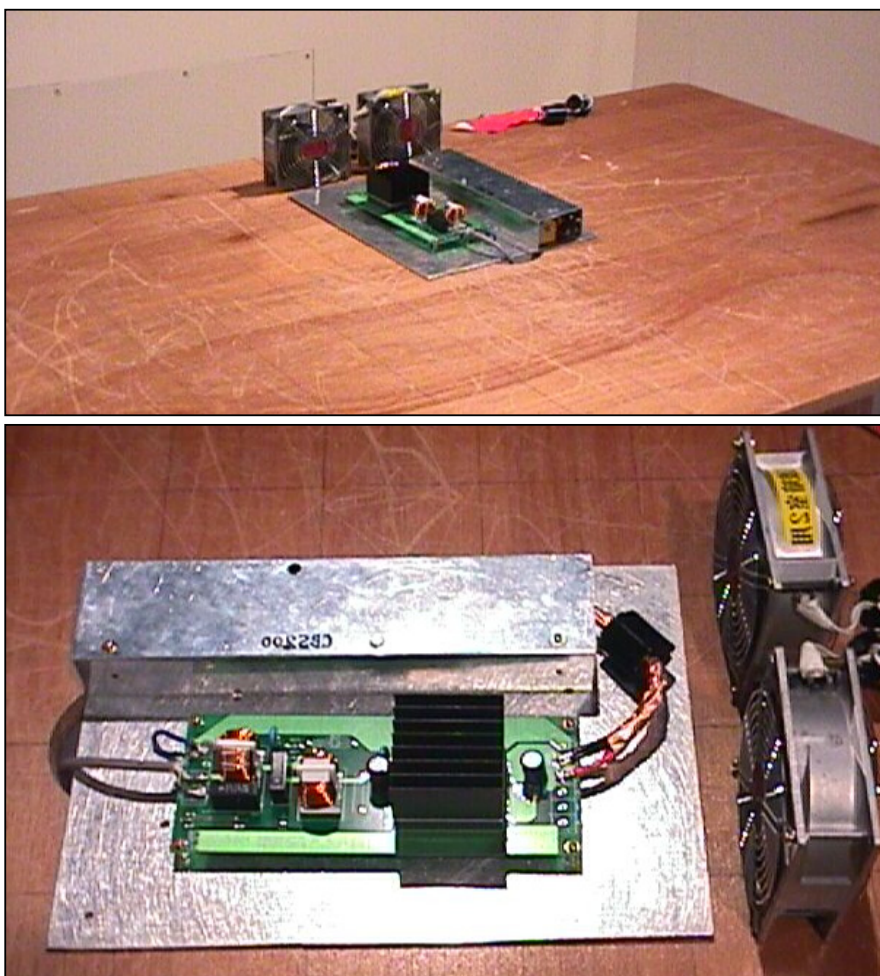
BL: Biconi-Log

## Conditions

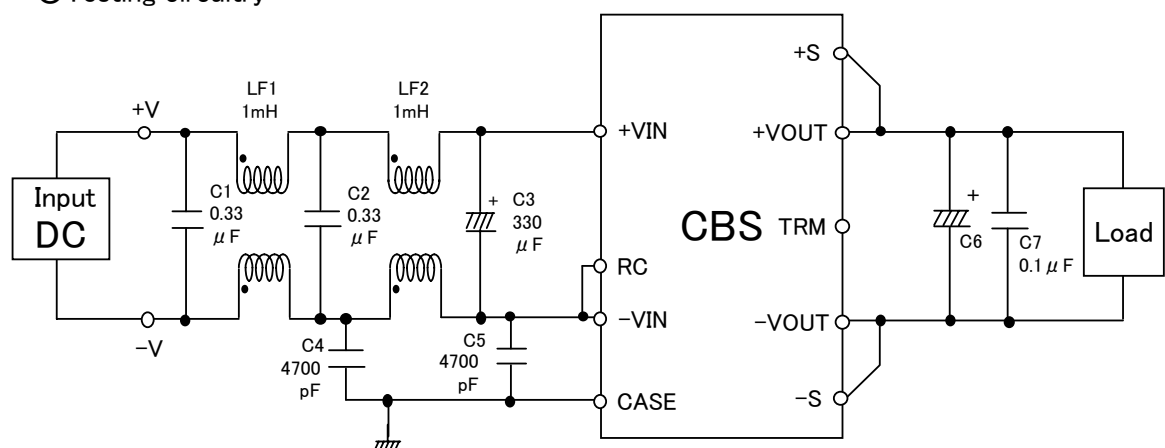
Date 2002/4/17

Test : RADIATED EMISSION  
 Model Name : CBS20024

## ○Photographs of Test Set-Up



## ○Testing circuitry



- LF1、LF2 : SC-10-10J(TOKIN)  
 C1、C2 : CFJC22E334M (Nitsuko)  
 C3 : 50V 330  $\mu$ F PMseries (nichicon)  
 C4、C5 : DE1307-640E472M-KH (MURATA)  
 C6 : CBS2002403/05 10V 2200  $\mu$ F LXZseries (NIPPON CHEMI-CON)  
       CBS2002412/15 25V 1000  $\mu$ F LXZseries (NIPPON CHEMI-CON)  
       CBS2002424/28 35V 470  $\mu$ F LXZseries (NIPPON CHEMI-CON)  
 C7 : MDD21H104M (Nitsuko)

Fig. Testing circuitry

## LINE CONDUCTION

Model Name : CBS2002405

Model No. :

Serial No. :

Points : 2

Detector : PEAK/QP/Ave.

Line Mode : VA/VB

Power Supply : DC 24V

Limit1: [EN 55022] Class B(QP)

Limit2: [EN 55022] Class B(Ave.)

Temp. : 25degC

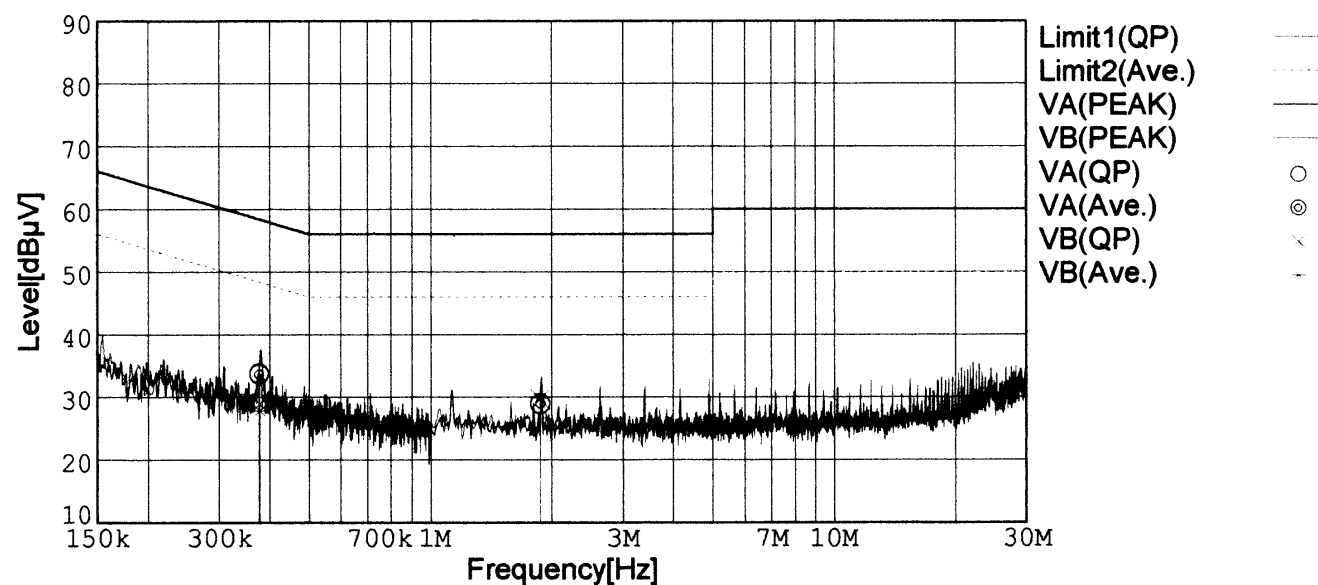
Humi. : 40%

Date : 2002/3/5 1:30

Test Equip. : R3132,ESPC

Comment : Vo=5V, Io=30A

Tested by : T.Oiwake



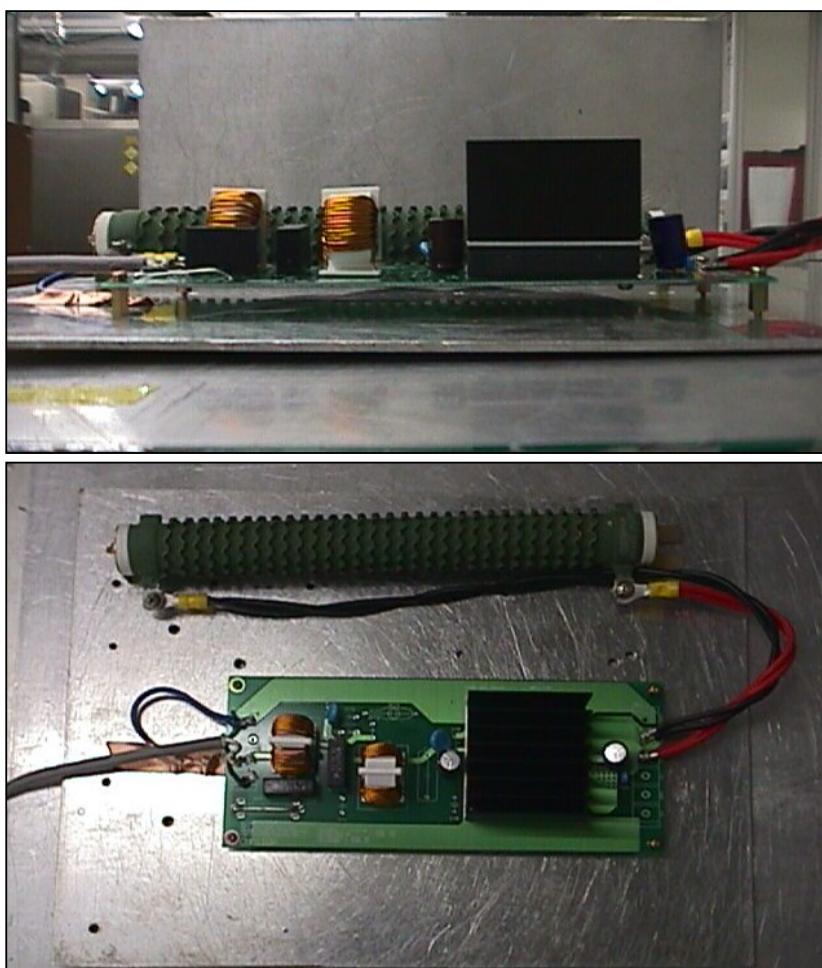
Frequency [MHz]	Meter Reading (QP) [dBμV]	Meter Reading (Ave.) [dBμV]	Factor [dB]	Level (QP) [dBμV]	Level (Ave.) [dBμV]	Line	Limit (QP) [dBμV]	Limit (Ave.) [dBμV]	Margin (QP)[dB]	Margin (Ave.) [dB]
0.3761	24.0	23.8	9.8	33.8	33.6	VA	58.4	48.4	24.6	14.8
1.8750	19.0	19.1	9.9	28.9	29.0	VA	56.0	46.0	27.1	17.0
0.3775	19.1	18.0	9.8	28.9	27.8	VB	58.3	48.3	29.4	20.5
1.8729	19.8	20.0	9.9	29.7	29.9	VB	56.0	46.0	26.3	16.1

## Conditions

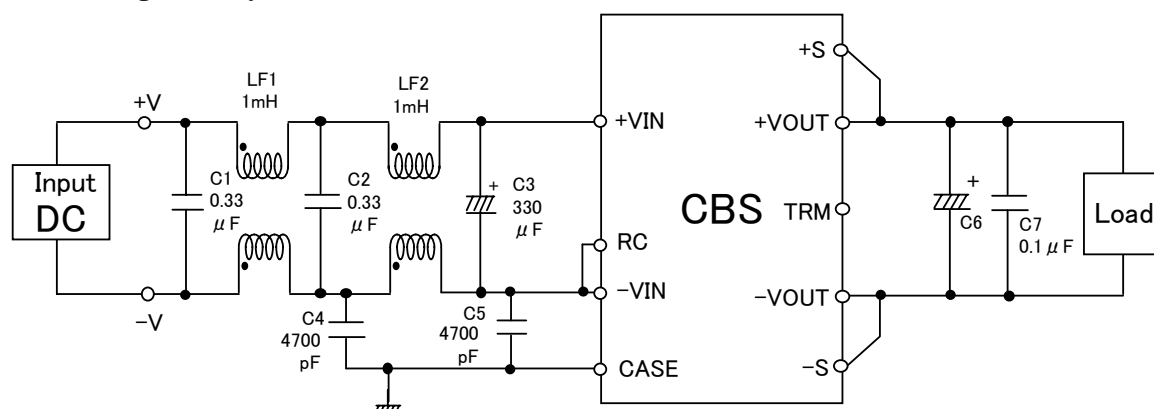
Date 2002/4/17

Test : LINE CONDUCTION  
 Model Name : CBS20024

○Photographs of Test Set-Up



○Testing circuitry



LF1、LF2 : SC-10-10J(TOKIN)  
 C1、C2 : CFJC22E334M (Nitsuko)  
 C3 : 50V 330  $\mu$  F PMseries (nichicon)  
 C4、C5 : DE1307-640E472M-KH (MURATA)  
 C6 : CBS2002403/05 10V 2200  $\mu$  F LXZseries (NIPPON CHEMI-CON)  
 CBS2002412/15 25V 1000  $\mu$  F LXZseries (NIPPON CHEMI-CON)  
 CBS2002424/28 35V 470  $\mu$  F LXZseries (NIPPON CHEMI-CON)  
 C7 : MDD21H104M (Nitsuko)

Fig. Testing circuitry