



# RADIATED EMISSION

Model Name : CBS1004828

Model No. :

Serial No. :

Points : 2

Detector : PEAK/QP

Polarization : Hori. & Vert.

Limit: [EN 55022] Class B<3m>

Tested by : K,Kinoshita

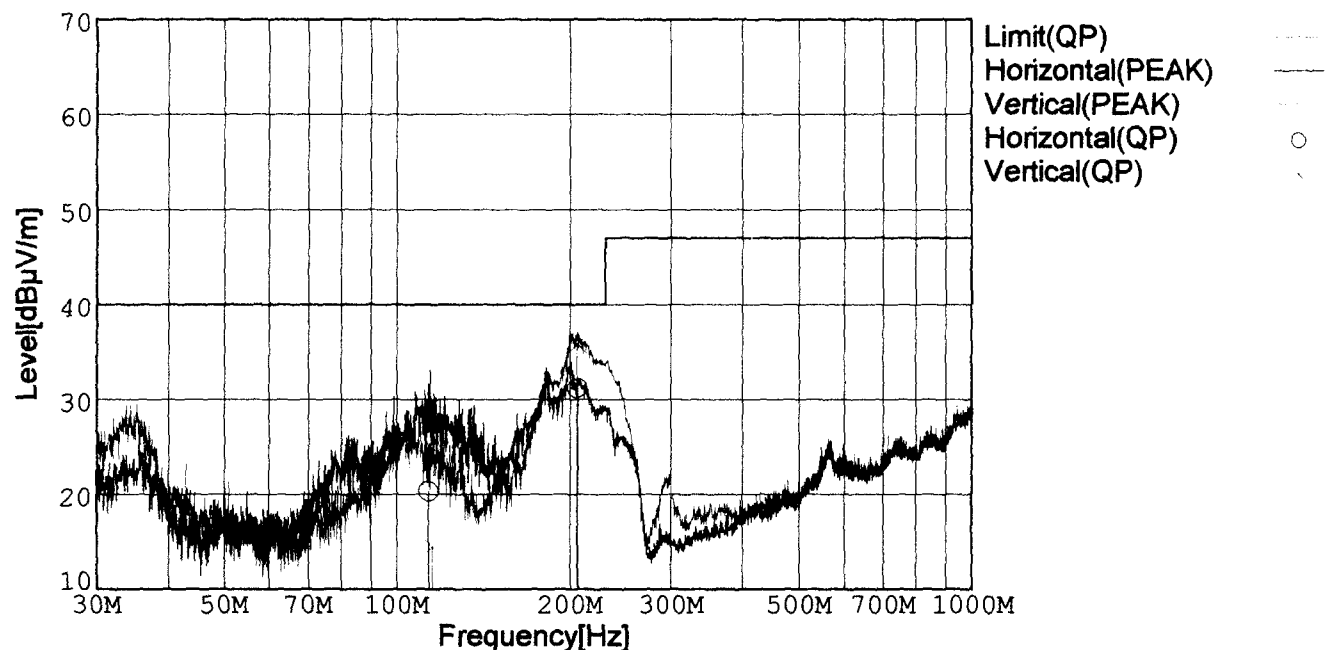
Temp. : 25degC

Humi. : 40%

Date : 2001/2/26 18:58

Test Equip. : R3132,ESPC

Comment : DC48V Io=3.6A



Frequency [MHz]	Meter Reading (QP) [dBμV]	Ant. Type	Antenna Factor [dB/m]	Cable & Preamp [dB]	Level (QP) [dBμV/m]	Angle[°]	Height [cm]	Polar.	Limit [dBμV/m]	Margin [dB]
113.751	41.0	BL	10.8	-31.5	20.3	310	132	Hori.	40.0	19.7
205.925	53.7	BL	8.6	-31.1	31.2	290	157	Hori.	40.0	8.8
115.346	35.2	BL	10.8	-31.5	14.5	222	157	Vert.	40.0	25.5
205.792	58.3	BL	8.6	-31.1	35.8	172	107	Vert.	40.0	4.2

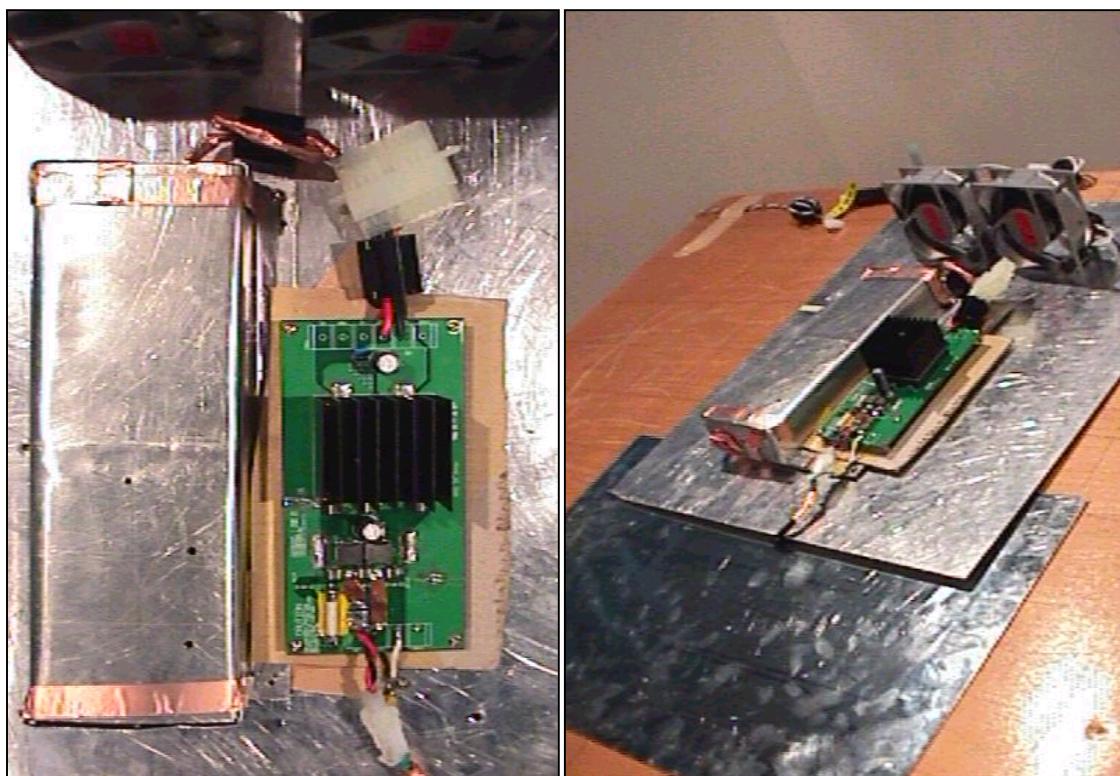
BL: Biconi-Log

## Conditions

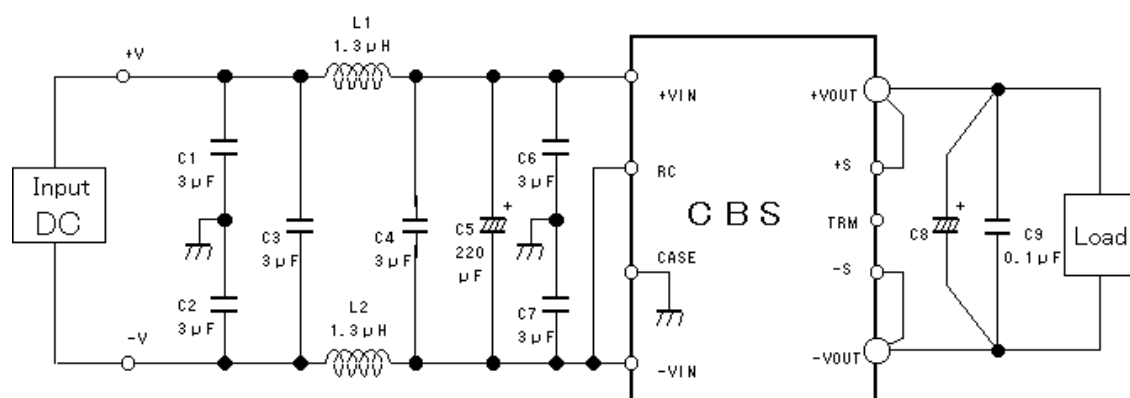
Date 2001/3/7

Test : RADIATED EMISSION  
 Model Name : CBS10048

## ○Photographs of Test Set-Up



## ○Testing circuitry



L1, L2 : ETQP6F1R3LFA (MATSUSHITA)  
 C1, C2, C3, C4, C6, C7 : CY55Y5P2A305M(TOKIN)  
 C5 : 80V 220 $\mu$ F PFseries (nichicon)  
 C8 : CBS1004805 10V 2200 $\mu$ F LXZseries (NIPPON CHEMI-CON)  
       CBS1004812 25V 470 $\mu$ F LXZseries (NIPPON CHEMI-CON)  
       CBS1004828 35V 220 $\mu$ F LXZseries (NIPPON CHEMI-CON)  
 C9 : MDD21H104M (Nitsuko)

Fig. Testing circuitry



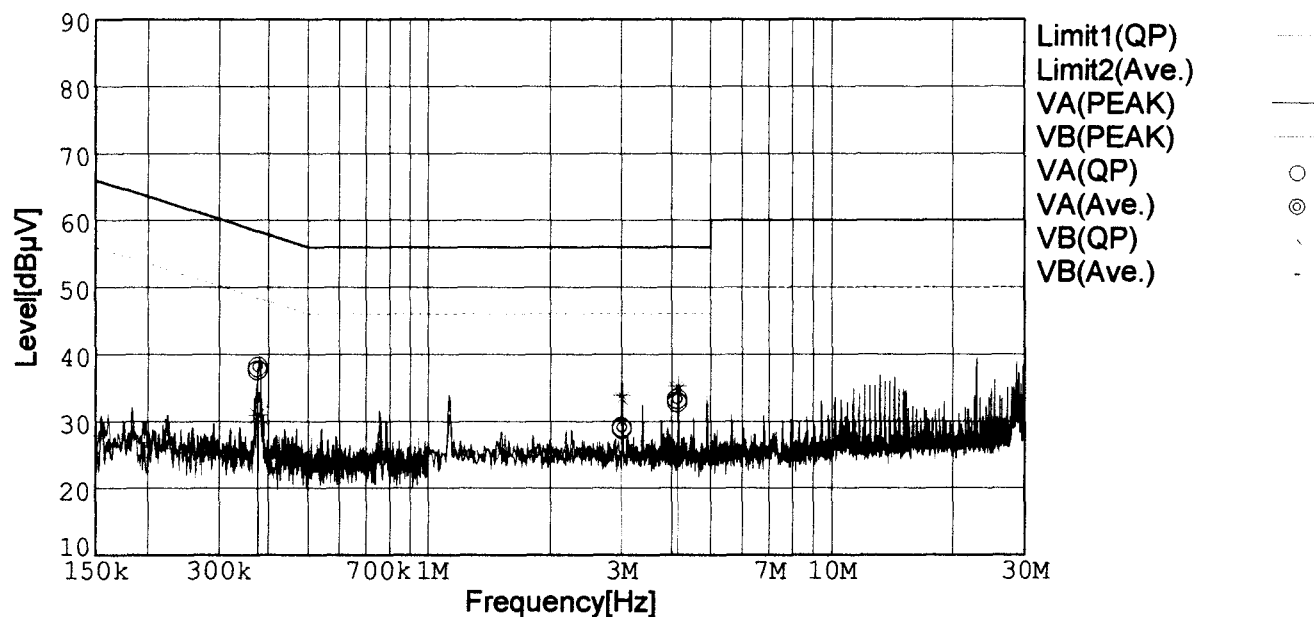
# LINE CONDUCTION

Model Name : CBS1004828  
 Model No. :  
 Serial No. :  
 Points : 3  
 Detector : PEAK/QP/Ave.  
 Line Mode : VA/VB

Tested by : K.Kinoshita  
 Temp. : 25degC  
 Humi. : 45%  
 Date : 2001/2/26 19:15  
 Test Equip. : R3132,ESPC  
 Comment : DC48V Io=3.6A

Limit1: [EN 55022] Class B(QP)

Limit2: [EN 55022] Class B(Ave.)



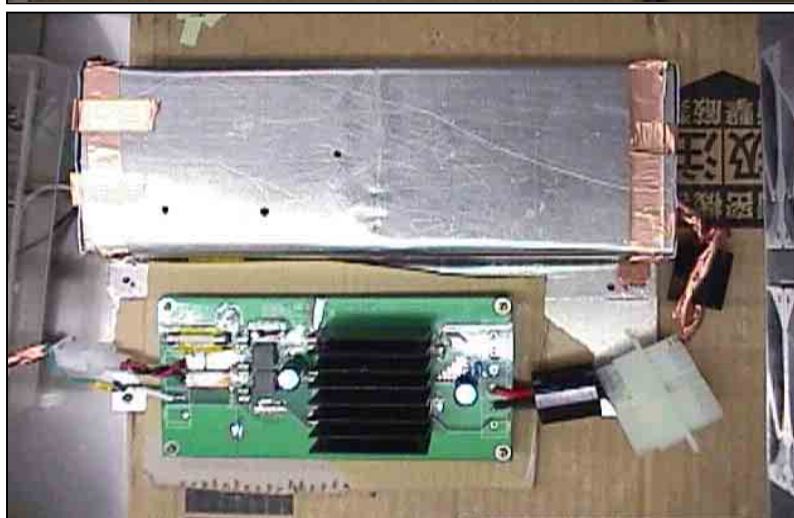
Frequency [MHz]	Meter Reading (QP) [dBμV]	Meter Reading (Ave.) [dBμV]	Factor [dB]	Level (QP) [dBμV]	Level (Ave.) [dBμV]	Line	Limit (QP) [dBμV]	Limit (Ave.) [dBμV]	Margin (QP)[dB]	Margin (Ave.) [dB]
0.3757	27.8	28.4	9.8	37.6	38.2	VA	58.4	48.4	20.8	10.2
3.0054	18.9	19.2	9.9	28.8	29.1	VA	56.0	46.0	27.2	16.9
4.1250	22.8	23.3	10.0	32.8	33.3	VA	56.0	46.0	23.2	12.7
0.3768	21.1	21.2	9.8	30.9	31.0	VB	58.4	48.4	27.5	17.4
3.0014	23.5	23.9	9.9	33.4	33.8	VB	56.0	46.0	22.6	12.2
4.1248	24.6	25.2	10.0	34.6	35.2	VB	56.0	46.0	21.4	10.8

# Conditions

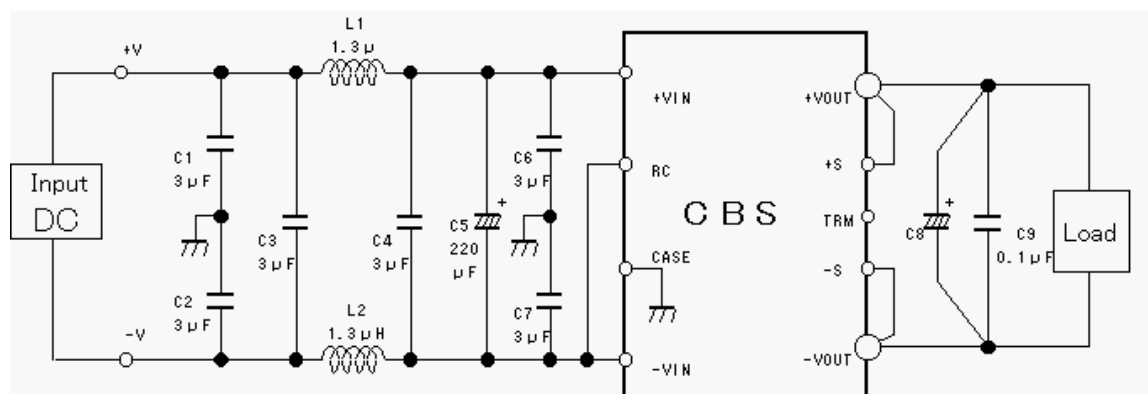
Date 2001/3/7

Test : LINE CONDUCTION  
Model Name : CBS10048

## Photographs of Test Set-Up



## Testing circuitry



L1, L2 : ETQP6F1R3LFA (MATSUSHITA)  
C1, C2, C3, C4, C6, C7 : CY55Y5P2A305M(TOKIN)  
C5 : 80V 220 μF PFseries (nichicon)  
C8 : CBS1004805 10V 2200 μF LXZseries (NIPPON CHEMI-CON)  
CBS1004812 25V 470 μF LXZseries (NIPPON CHEMI-CON)  
CBS1004828 35V 220 μF LXZseries (NIPPON CHEMI-CON)  
C9 : MDD21H104M (Nitsuko)

Fig. Testing circuitry