

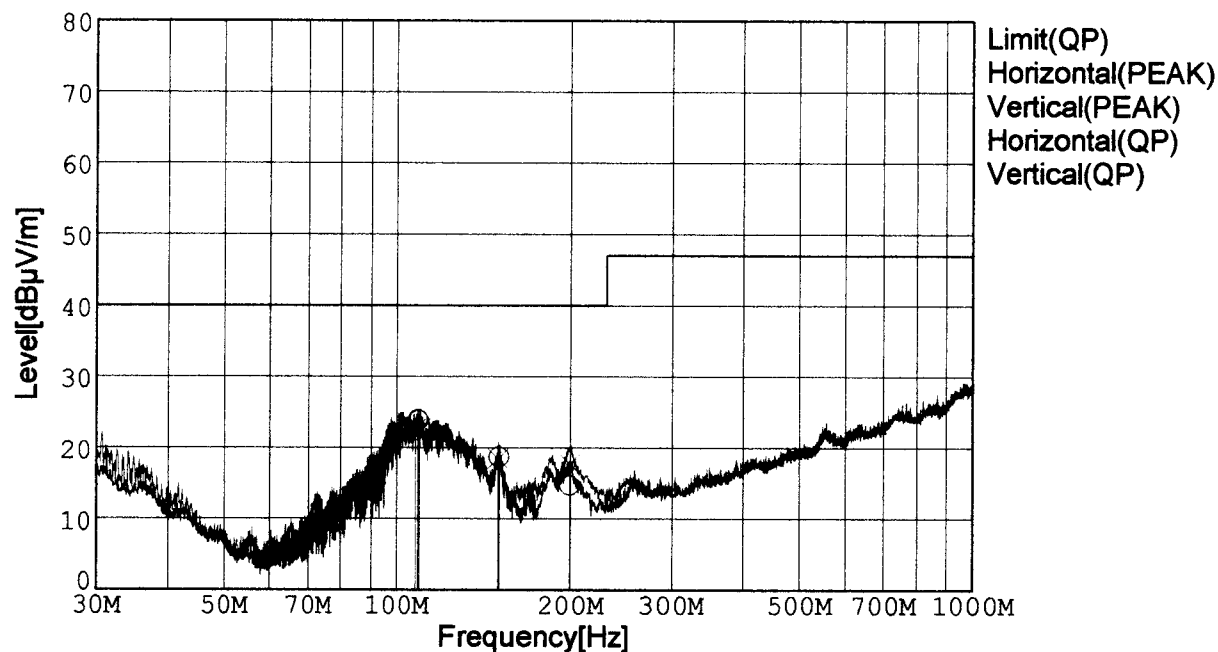


RADIATED EMISSION

Model Name : CBS1004812
 Model No. :
 Serial No. :
 Points : 4
 Detector : PEAK/QP
 Polarization : Hori. & Vert.

Tested by : K.Kinoshita
 Temp. : 25degC
 Humi. : 40%
 Date : 2001/2/27 19:45
 Test Equip. : R3132,ESPC
 Comment : DC48V Io=8.4A

Limit: [EN 55022] Class B<3m>



Frequency [MHz]	Meter Reading (QP) [dBμV]	Ant. Type	Antenna Factor [dB/m]	Cable & Preamp [dB]	Level (QP) [dBμV/m]	Angle[°]	Height [cm]	Polar.	Limit [dBμV/m]	Margin [dB]
109.193	44.9	BL	10.6	-31.5	24.0	102	155	Hori.	40.0	16.0
109.231	44.8	BL	10.6	-31.5	23.9	89	151	Hori.	40.0	16.1
150.590	39.5	BL	10.6	-31.4	18.7	115	154	Hori.	40.0	21.3
199.391	37.4	BL	8.5	-31.2	14.7	78	138	Hori.	40.0	25.3
108.094	43.6	BL	10.5	-31.5	22.6	358	148	Vert.	40.0	17.4
109.931	43.5	BL	10.7	-31.5	22.7	350	119	Vert.	40.0	17.3
149.873	39.3	BL	10.6	-31.4	18.5	53	159	Vert.	40.0	21.5
199.396	40.4	BL	8.5	-31.2	17.7	2	116	Vert.	40.0	22.3

BL: Biconi-Log

Fig. Testing circuitry



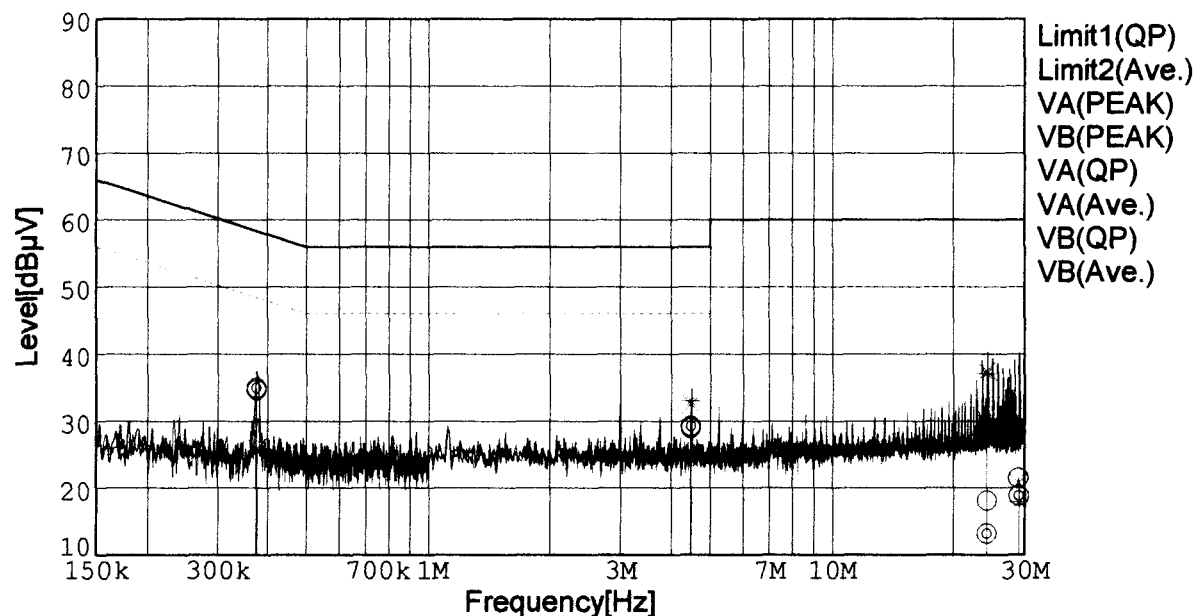
LINE CONDUCTION

Model Name : CBS1004812
 Model No. :
 Serial No. :
 Points : 4
 Detector : PEAK/QP/Ave.
 Line Mode : VA/VB

Tested by : K.Kinoshita
 Temp. : 25degC
 Humi. : 40%
 Date : 2001/2/27 18:53
 Test Equip. : R3132,ESPC
 Comment : DC48V Io=8.4A

Limit1: [EN 55022] Class B(QP)

Limit2: [EN 55022] Class B(Ave.)



Frequency [MHz]	Meter Reading (QP) [dBμV]	Meter Reading (Ave.) [dBμV]	Factor [dB]	Level (QP) [dBμV]	Level (Ave.) [dBμV]	Line	Limit (QP) [dBμV]	Limit (Ave.) [dBμV]	Margin (QP)[dB]	Margin (Ave.) [dB]
0.3737	24.8	25.1	9.8	34.6	34.9	VA	58.4	48.4	23.8	13.5
4.4809	18.9	19.2	10.0	28.9	29.2	VA	56.0	46.0	27.1	16.8
24.2228	7.8	2.9	10.3	18.1	13.2	VA	60.0	50.0	41.9	36.8
29.0911	11.1	8.4	10.4	21.5	18.8	VA	60.0	50.0	38.5	31.2
0.3758	16.1	15.7	9.8	25.9	25.5	VB	58.4	48.4	32.5	22.9
4.4756	22.5	23.0	10.0	32.5	33.0	VB	56.0	46.0	23.5	13.0
24.2006	27.2	26.8	10.3	37.5	37.1	VB	60.0	50.0	22.5	12.9
29.0876	10.4	7.5	10.4	20.8	17.9	VB	60.0	50.0	39.2	32.1

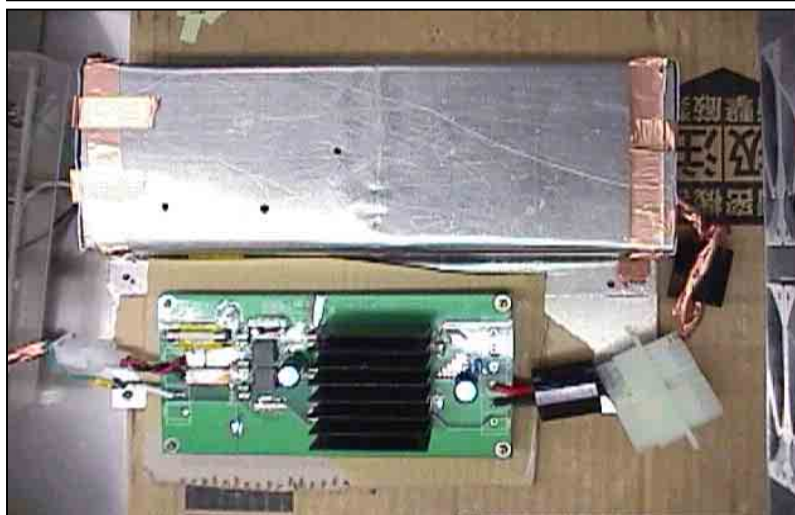
Conditions

Date 2001/3/7

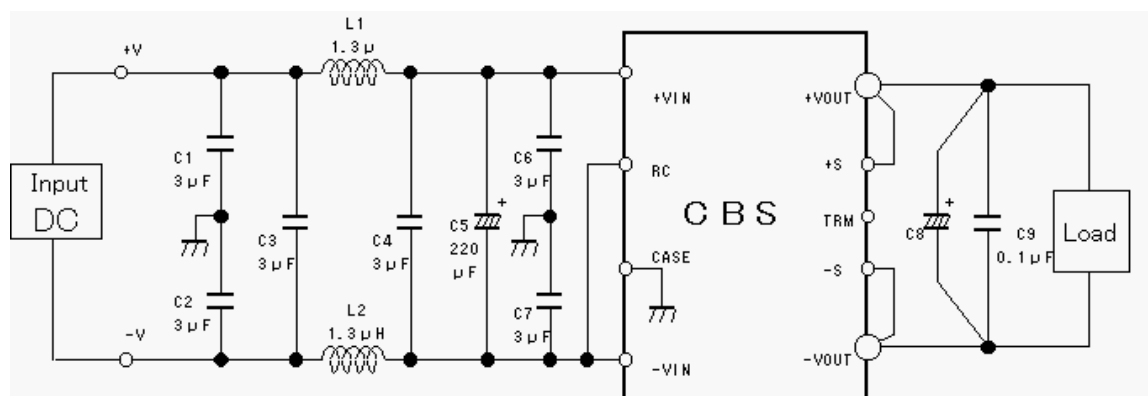
Test : LINE CONDUCTION

Model Name : CBS10048

Photographs of Test Set-Up



Testing circuitry



L1, L2 : ETQP6F1R3LFA (MATSUSHITA)
C1, C2, C3, C4, C6, C7 : CY55Y5P2A305M(TOKIN)
C5 : 80V 220 μ F PFseries (nichicon)
C8 : CBS1004805 10V 2200 μ F LXZseries (NIPPON CHEMI-CON)
CBS1004812 25V 470 μ F LXZseries (NIPPON CHEMI-CON)
CBS1004828 35V 220 μ F LXZseries (NIPPON CHEMI-CON)
C9 : MDD21H104M (Nitsuko)

Fig. Testing circuitry