

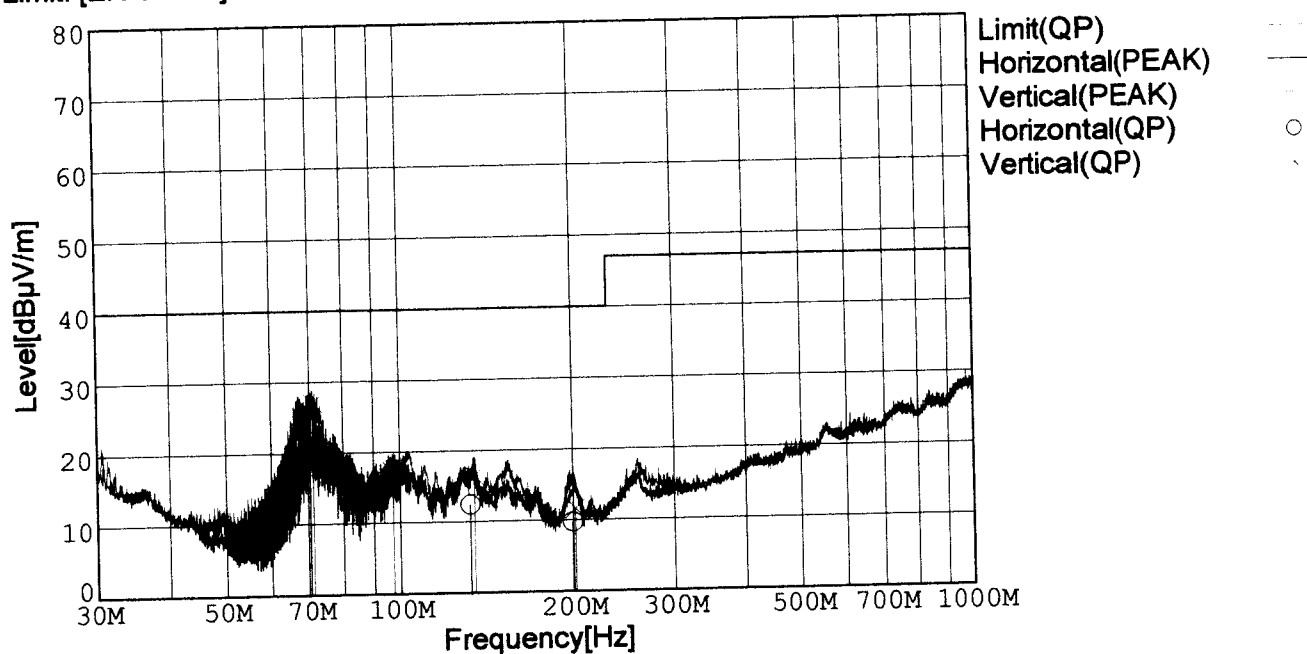


RADIATED EMISSION

Model Name : CBS1004805
 Model No. :
 Serial No. :
 Points : 5
 Detector : PEAK/QP
 Polarization : Hori. & Vert.

Tested by : K.Kinoshita
 Temp. : 25degC
 Humi. : 40%
 Date : 2001/3/2 22:23
 Test Equip. : R3132,ESPC
 Comment : DC48V Io=20A

Limit: [EN 55022] Class B<3m>



Frequency [MHz]	Meter Reading (QP) [dBμV]	Ant. Type	Antenna Factor [dB/m]	Cable & Preamp [dB]	Level (QP) [dBμV/m]	Angle[°]	Height [cm]	Polar.	Limit [dBμV/m]	Margin [dB]
69.511	47.1	BL	5.3	-31.8	20.6	68	145	Hori.	40.0	19.4
97.189	39.3	BL	9.5	-31.6	17.2	83	156	Hori.	40.0	22.8
132.340	32.7	BL	11.1	-31.4	12.4	129	146	Hori.	40.0	27.6
199.756	32.4	BL	8.5	-31.2	9.7	150	114	Hori.	40.0	30.3
70.994	53.2	BL	5.6	-31.8	27.0	20	107	Vert.	40.0	13.0
97.216	39.4	BL	9.5	-31.6	17.3	165	146	Vert.	40.0	22.7
134.615	36.8	BL	11.0	-31.4	16.4	277	142	Vert.	40.0	23.6
201.778	34.2	BL	8.5	-31.1	11.6	143	109	Vert.	40.0	28.4

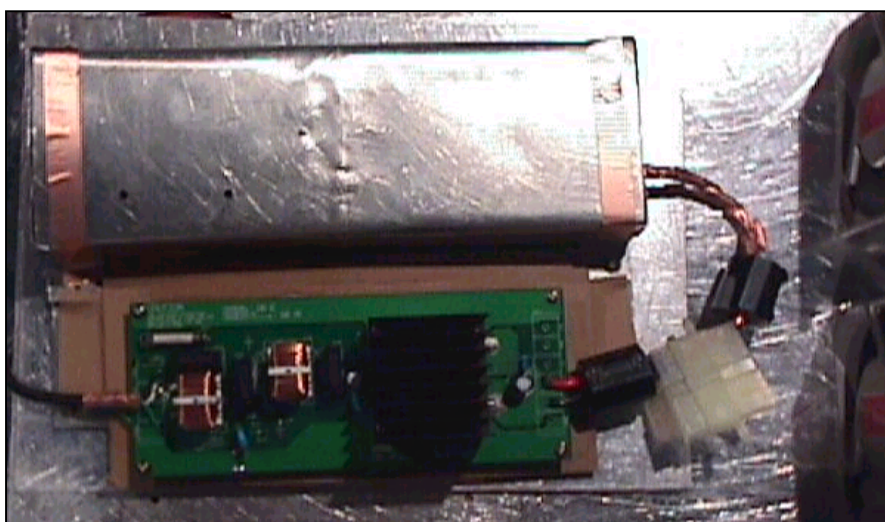
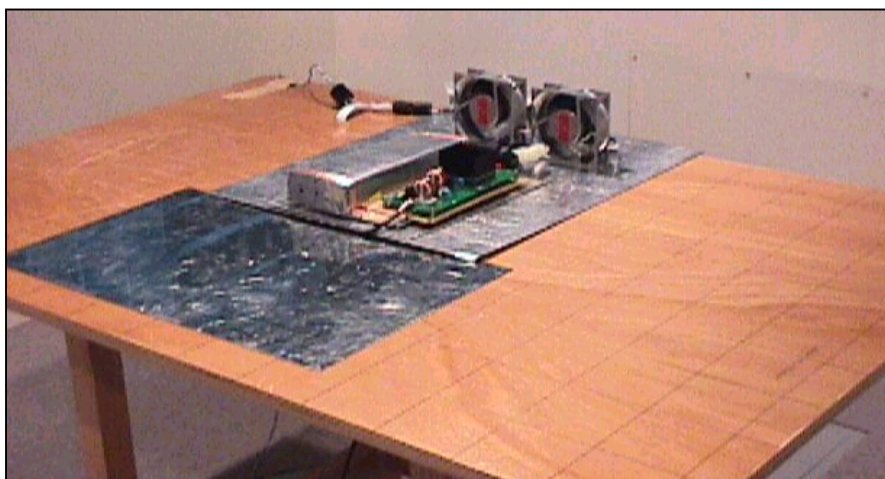
BL: Biconi-Log

Conditions

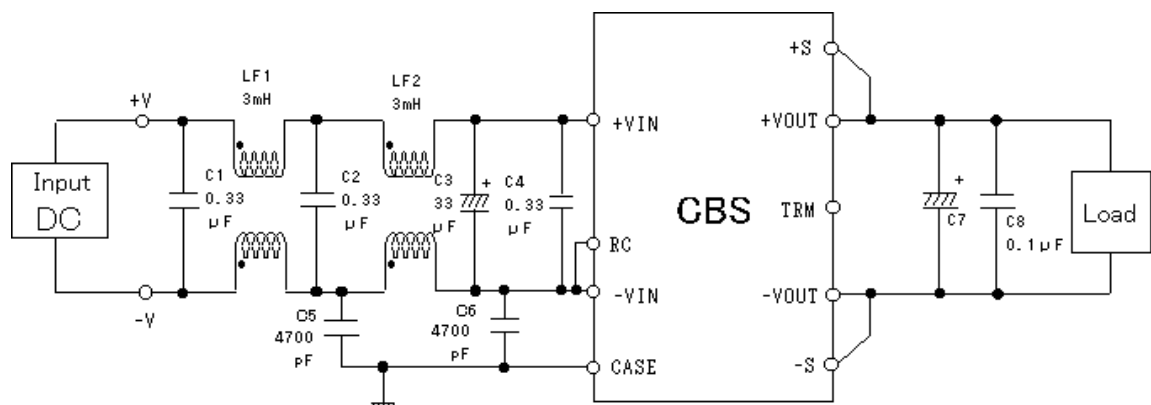
Date 2001/3/7

Test : RADIATED EMISSION
 Model Name : CBS10048

○Photographs of Test Set-Up



○Testing circuitry



L1, L2 : SC-05-80J (TOKIN)
 C1, C2, C4 : CFJC22E334M (Nitsuko)
 C3 : 100V 33 μF PMseries (nichicon)
 C5, C6 : DE1807-640E472M-KH (MURATA)
 C7 : CBS1004803,05 10V 2200 μF LXZseries (NIPPON CHEMI-CON)
 CBS1004812,15 25V 470 μF LXZseries (NIPPON CHEMI-CON)
 CBS1004824,28 35V 220 μF LXZseries (NIPPON CHEMI-CON)
 C8 : MDD21H104M (Nitsuko)

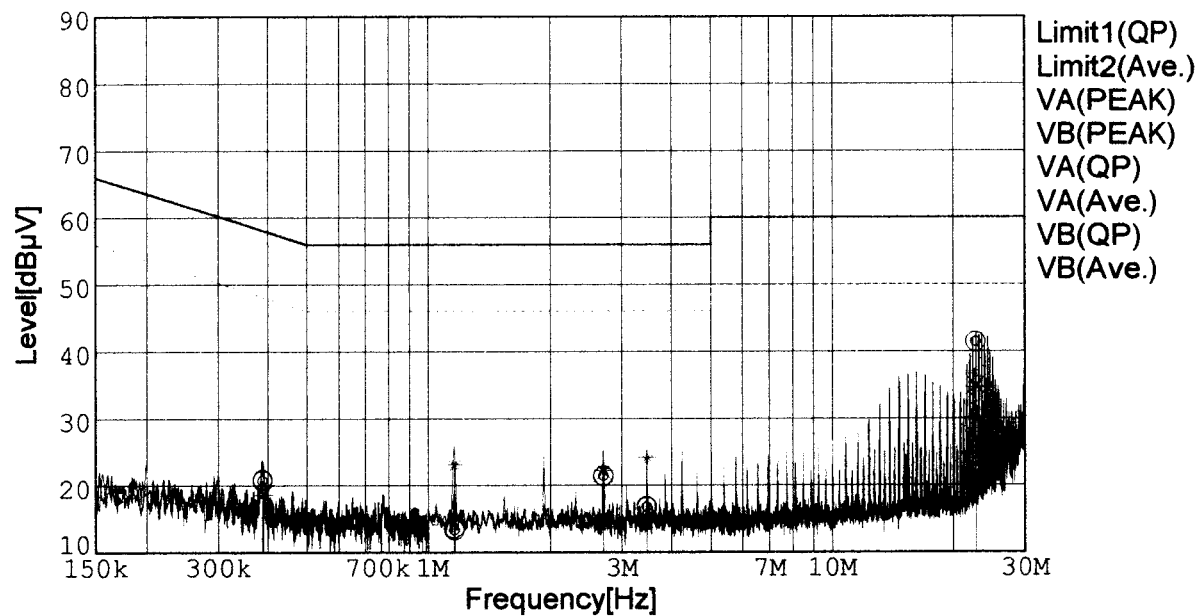
Fig. Testing circuitry



LINE CONDUCTION

Model Name : CBS1004805
 Model No. :
 Serial No. :
 Points : 5
 Detector : PEAK/QP/Ave.
 Line Mode : VA/VB
 Limit1: [EN 55022] Class B(QP)
 Limit2: [EN 55022] Class B(Ave.)

Tested by : K.Kinoshita
 Temp. : 25degC
 Humi. : 40%
 Date : 2001/3/2 23:01
 Test Equip. : R3132,ESPC
 Comment : DC48V Io=20A



Frequency [MHz]	Meter Reading (QP) [dBμV]	Meter Reading (Ave.) [dBμV]	Factor [dB]	Level (QP) [dBμV]	Level (Ave.) [dBμV]	Line	Limit (QP) [dBμV]	Limit (Ave.) [dBμV]	Margin (QP)[dB]	Margin (Ave.) [dB]
0.3875	11.0	10.9	9.8	20.8	20.7	VA	58.1	48.1	37.3	27.4
1.1606	3.7	3.4	9.9	13.6	13.3	VA	56.0	46.0	42.4	32.7
2.7006	11.5	11.5	9.9	21.4	21.4	VA	56.0	46.0	34.6	24.6
3.4692	7.0	6.9	9.9	16.9	16.8	VA	56.0	46.0	39.1	29.2
22.7327	31.1	31.1	10.3	41.4	41.4	VA	60.0	50.0	18.6	8.6
0.3903	9.0	8.8	9.8	18.8	18.6	VB	58.1	48.1	39.3	29.5
1.1583	12.9	13.3	9.9	22.8	23.2	VB	56.0	46.0	33.2	22.8
2.6984	12.1	12.3	9.9	22.0	22.2	VB	56.0	46.0	34.0	23.8
3.4685	13.8	14.2	9.9	23.7	24.1	VB	56.0	46.0	32.3	21.9
22.7315	24.6	24.3	10.3	34.9	34.6	VB	60.0	50.0	25.1	15.4

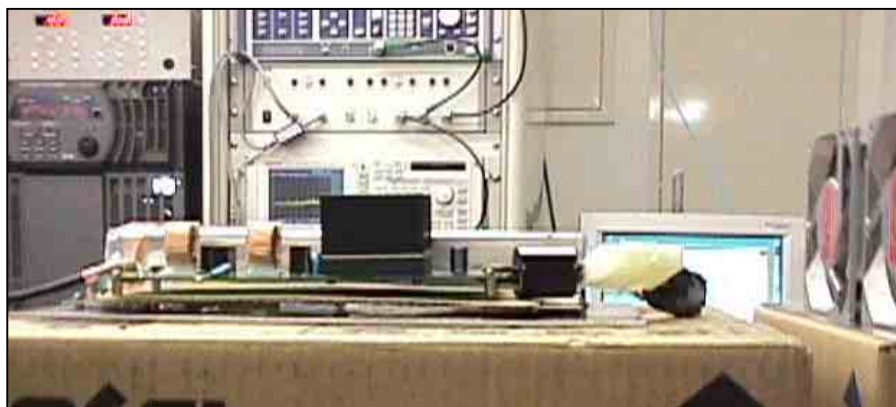
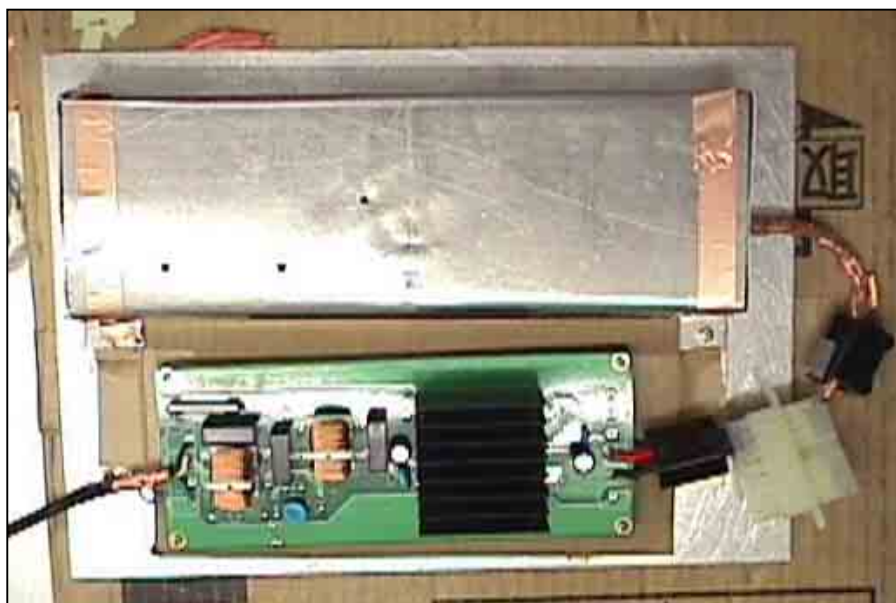
Conditions

Date 2001/3/7

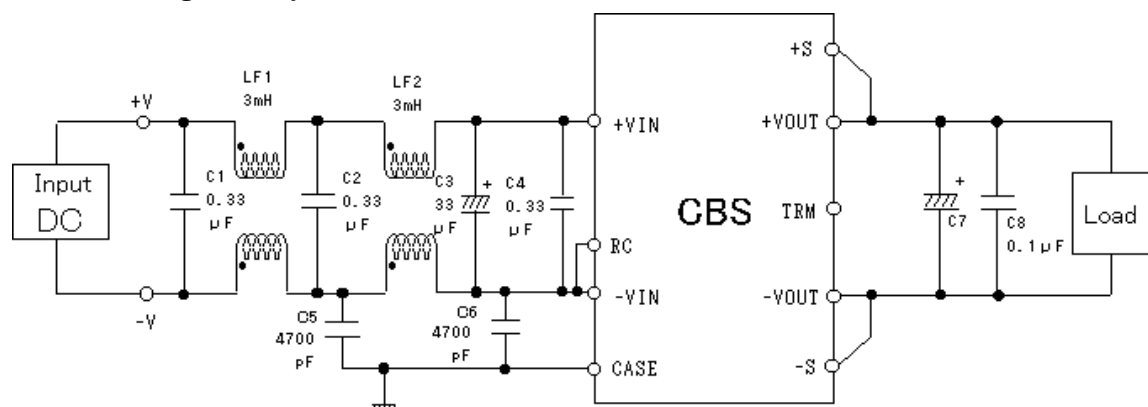
Test : LINE CONDUCTION

Model Name : CBS10048

Photographs of Test Set-Up



Testing circuitry



- L1, L2 : SC-05-30J (TOKIN)
 C1, C2, C4 : CFJC22E334M (Nitsuko)
 C3 : 100V 33 μ F PMseries (nichicon)
 C5, C6 : DE1307-640E472M-KH (MURATA)
 C7 : CBS1004803,05 10V 2200 μ F LXZseries (NIPPON CHEMI-CON)
 CBS1004812,15 25V 470 μ F LXZseries (NIPPON CHEMI-CON)
 CBS2004824,28 35V 220 μ F LXZseries (NIPPON CHEMI-CON)
 C8 : MDD21H104M (Nitsuko)

Fig. Testing circuitry