



# RADIATED EMISSION

Model Name : CBS1002415

Model No. :

Serial No. :

Points : 3

Detector : PEAK/QP

Polarization : Hori. & Vert.

Limit: [EN 55022] Class B<3m>

Tested by : T.Oiwake

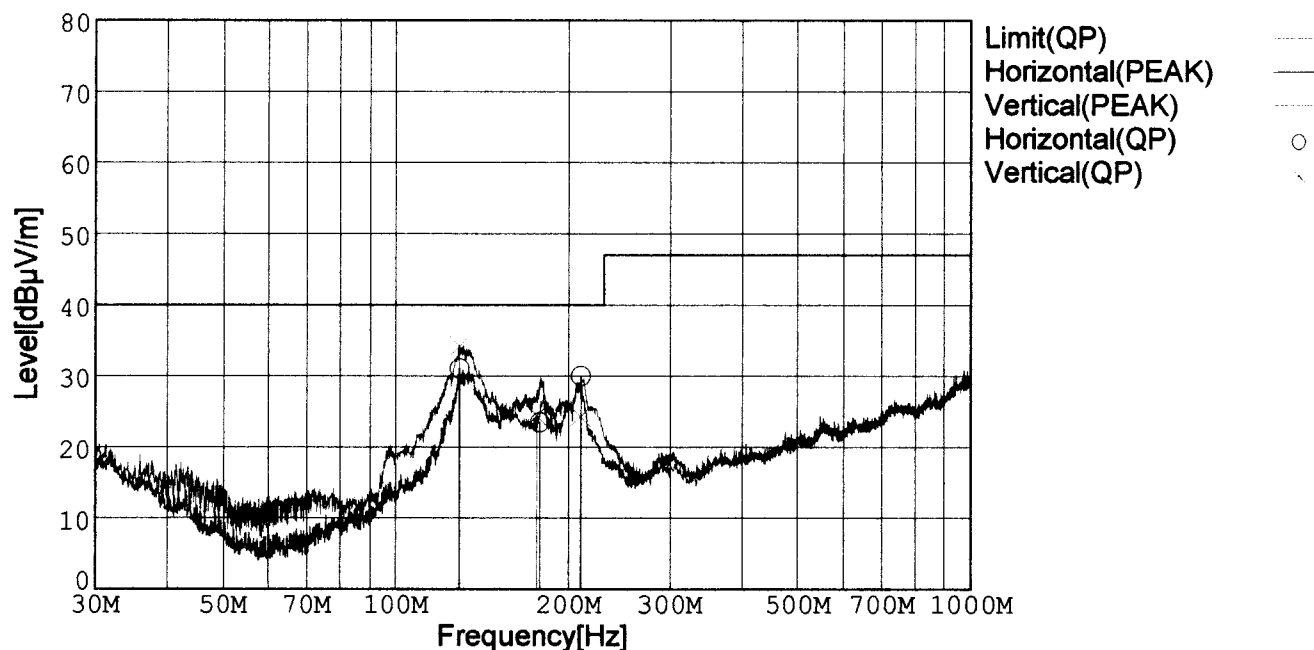
Temp. : 25degC

Humi. : 40%

Date : 2002/7/18 12:53

Test Equip. : R3132,ESPC

Comment : DC 24V, Io=6.7A



Frequency [MHz]	Meter Reading (QP) [dBμV]	Ant. Type	Antenna Factor [dB/m]	Cable & Preamp [dB]	Level (QP) [dBμV/m]	Angle[°]	Height [cm]	Polar.	Limit [dBμV/m]	Margin [dB]
128.933	51.3	BL	11.2	-31.5	31.0	97	159	Hori.	40.0	9.0
178.037	46.2	BL	8.5	-31.2	23.5	118	159	Hori.	40.0	16.5
210.038	52.4	BL	8.7	-31.1	30.0	270	151	Hori.	40.0	10.0
128.660	54.4	BL	11.2	-31.5	34.1	62	148	Vert.	40.0	5.9
175.794	47.1	BL	8.6	-31.3	24.4	84	131	Vert.	40.0	15.6
209.429	46.7	BL	8.7	-31.1	24.3	73	113	Vert.	40.0	15.7

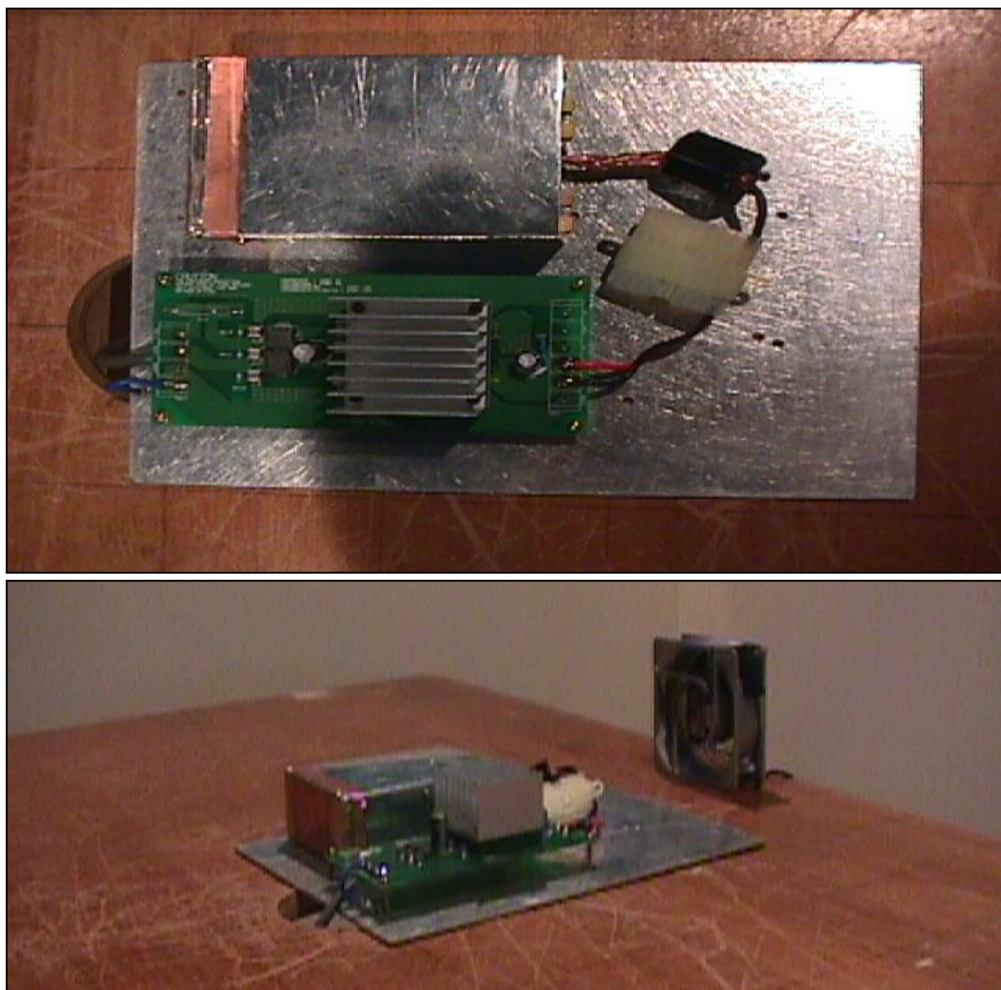
BL: Biconi-Log

# Conditions

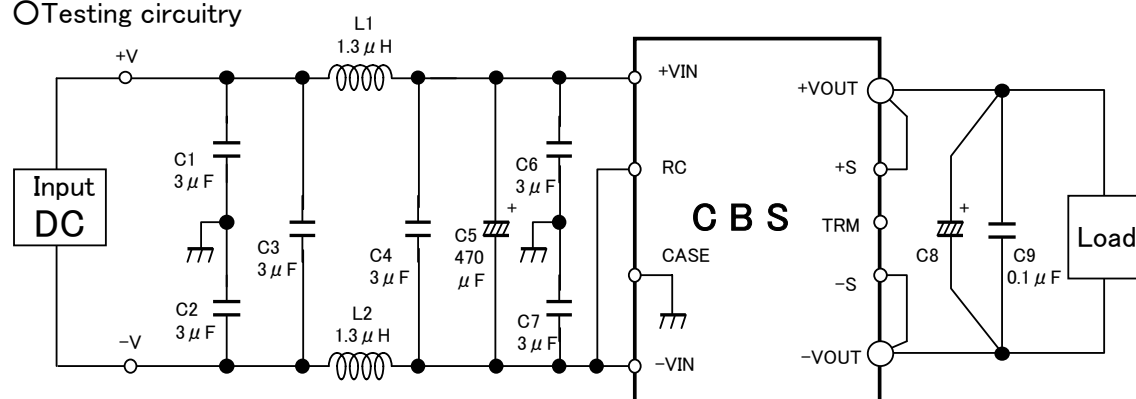
Date 2002/7/19

Test : RADIATED EMISSION  
Model Name : CBS1002403/15/24

## ○Photographs of Test Set-Up



## ○Testing circuitry



L1, L2 : ETQP6F1R3LFA (MATSUSHITA)

C1, C2, C3,

C4, C6, C7 : CY55Y5P2A305M (TOKIN)

C5 : 50V 470  $\mu$ F PMseries (nichicon)

C8 : CBS1002403 10V 2200  $\mu$ F LXZseries (NIPPON CHEMI-CON)

CBS1002415 25V 470  $\mu$ F LXZseries (NIPPON CHEMI-CON)

CBS1002424 35V 220  $\mu$ F LXZseries (NIPPON CHEMI-CON)

C9 : MDD21H104M (Nitsuko)

Fig. Testing circuitry



# LINE CONDUCTION

Model Name : CBS1002415

Model No. :

Serial No. :

Points : 3

Detector : PEAK/QP/Ave.

Line Mode : VA/VB

Limit1: [EN 55022] Class B(QP)

Limit2: [EN 55022] Class B(Ave.)

Twsted by : T.Oiwake

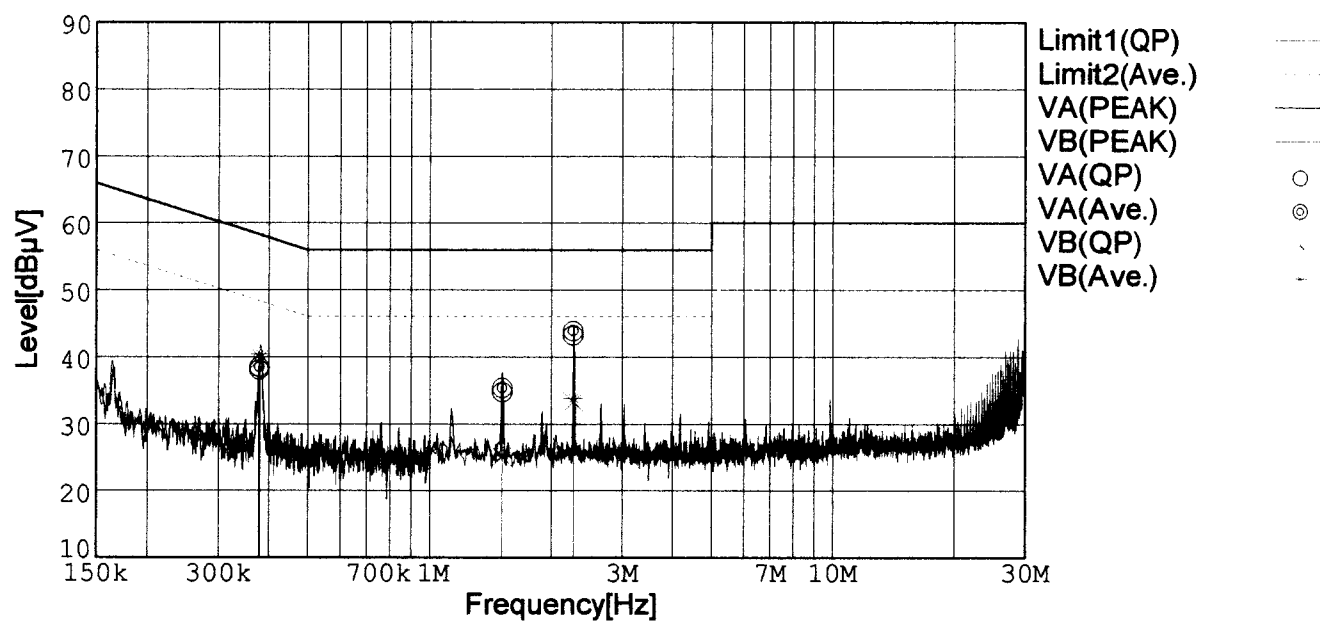
Temp. : 25degC

Humi. : 40%

Date : 2002/7/16 11:02

Test Equip. : R3132,ESPC

Comment : DC 24V, Io=6.7A



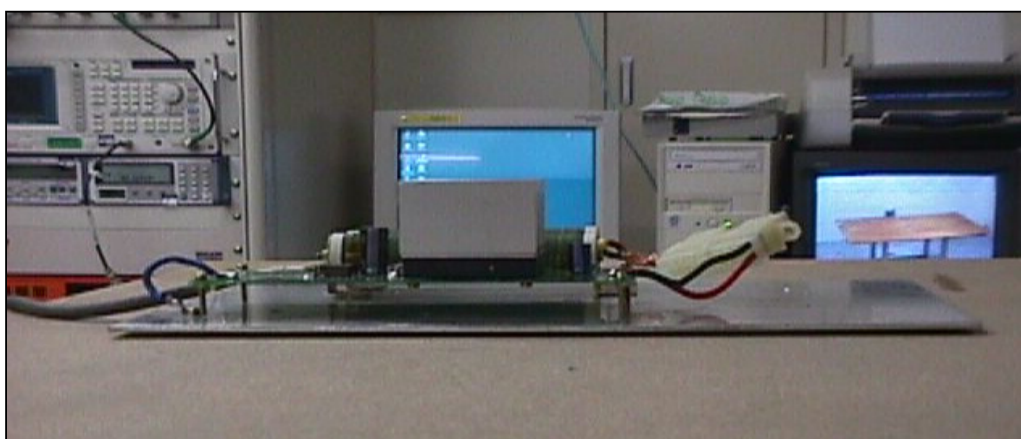
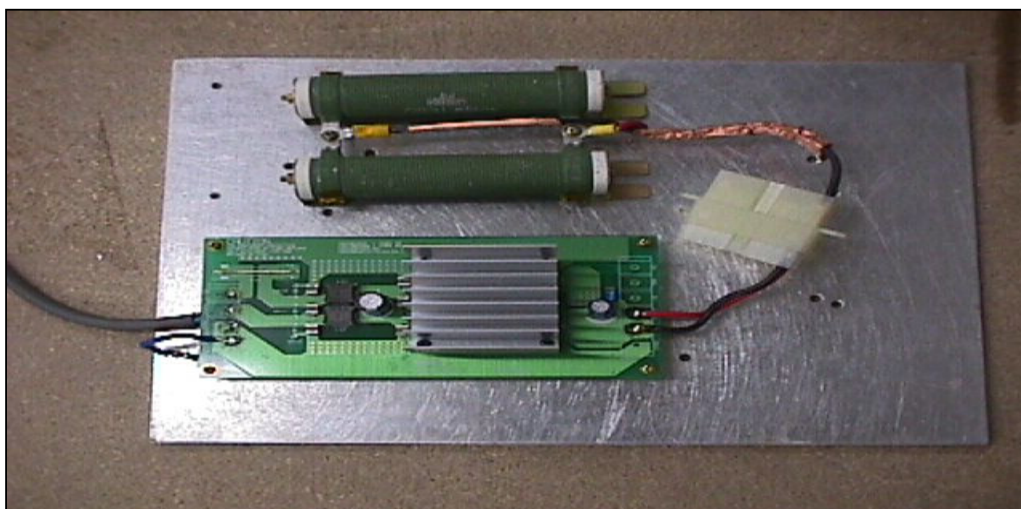
Frequency [MHz]	Meter Reading (QP) [dBμV]	Meter Reading (Ave.) [dBμV]	Factor [dB]	Level (QP) [dBμV]	Level (Ave.) [dBμV]	Line	Limit (QP) [dBμV]	Limit (Ave.) [dBμV]	Margin (QP)[dB]	Margin (Ave.) [dB]
0.3776	28.3	28.6	9.8	38.1	38.4	VA	58.3	48.3	20.2	9.9
1.5138	24.8	25.4	9.9	34.7	35.3	VA	56.0	46.0	21.3	10.7
2.2670	33.3	34.0	9.9	43.2	43.9	VA	56.0	46.0	12.8	2.1
0.3796	30.0	30.6	9.8	39.8	40.4	VB	58.3	48.3	18.5	7.9
1.5119	15.2	15.3	9.9	25.1	25.2	VB	56.0	46.0	30.9	20.8
2.2665	23.4	23.9	9.9	33.3	33.8	VB	56.0	46.0	22.7	12.2

# Conditions

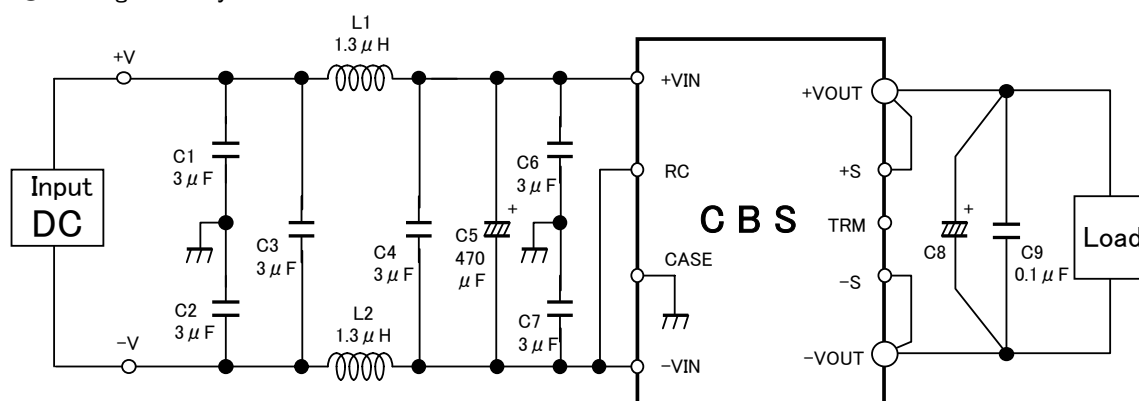
Date 2002/7/19

Test : LINE CONDUCTION  
Model Name : CBS1002403/15/24

○Photographs of Test Set-Up



○Testing circuitry



- L1, L2 : ETQP6F1R3LFA (MATSUSHITA)
- C1, C2, C3, C4, C6, C7 : CY55Y5P2A305M (TOKIN)
- C5 : 50V 470  $\mu$  F PMseries (nichicon)
- C8 : CBS1002403 10V 2200  $\mu$  F LXZseries (NIPPON CHEMI-CON)  
CBS1002415 25V 470  $\mu$  F LXZseries (NIPPON CHEMI-CON)  
CBS1002424 35V 220  $\mu$  F LXZseries (NIPPON CHEMI-CON)
- C9 : MDD21H104M (Nitsuko)

Fig. Testing circuitry