



RADIATED EMISSION

Model Name : CBS1002412

Model No. :

Serial No. :

Points : 3

Detector : PEAK/QP

Polarization : Hori. & Vert.

Limit: [EN 55022] Class B<3m>

Tested by : K.Kinoshita

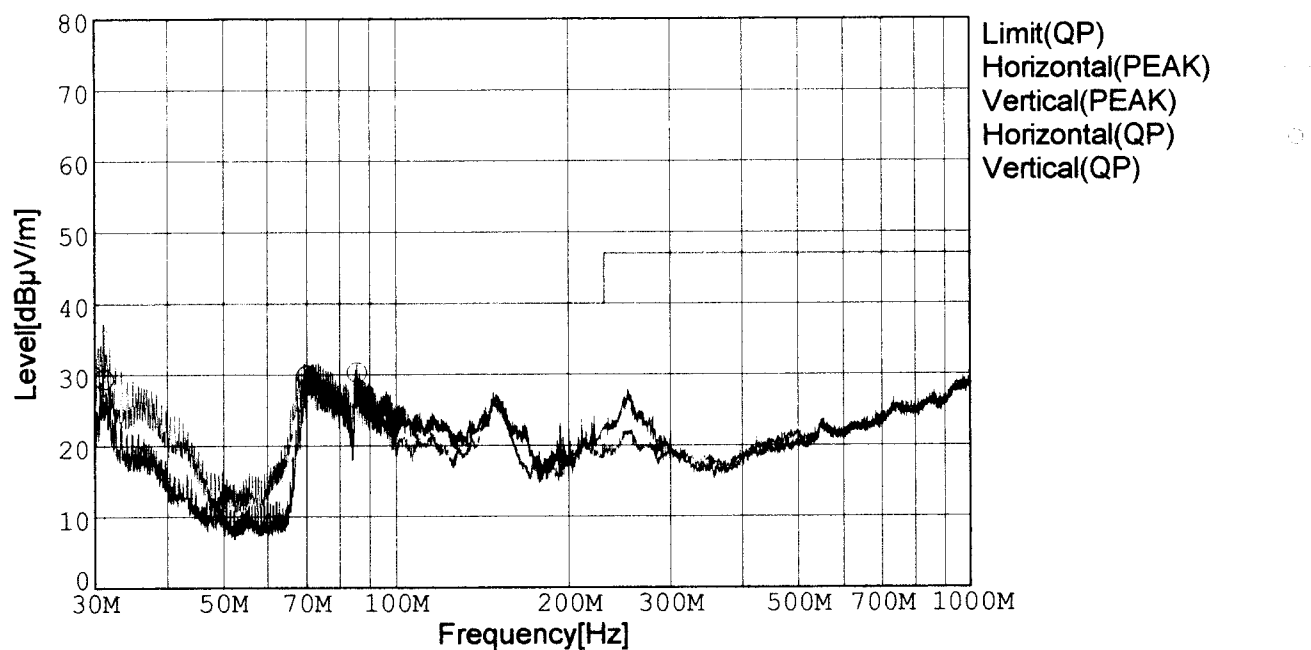
Temp. : 25degC

Humi. : 50%

Date : 2001/8/29 19:37

Test Equip. : R3132,ESPC

Comment : DC24V Io=8.4A



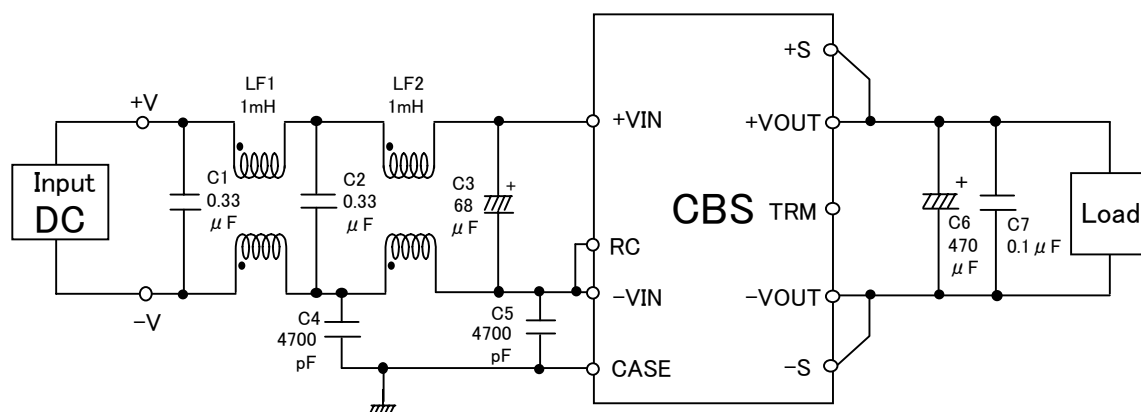
Frequency [MHz]	Meter Reading (QP) [dBμV]	Ant. Type	Antenna Factor [dB/m]	Cable & Preamp [dB]	Level (QP) [dBμV/m]	Angle[°]	Height [cm]	Polar.	Limit [dBμV/m]	Margin [dB]
31.107	43.7	BL	17.7	-32.1	29.3	315	101	Hori.	40.0	10.7
69.979	56.2	BL	5.4	-31.8	29.8	261	152	Hori.	40.0	10.2
85.710	53.9	BL	8.1	-31.7	30.3	103	157	Hori.	40.0	9.7
31.066	51.0	BL	17.7	-32.1	36.6	58	102	Vert.	40.0	3.4
69.991	58.1	BL	5.4	-31.8	31.7	35	125	Vert.	40.0	8.3
85.691	51.6	BL	8.1	-31.7	28.0	16	158	Vert.	40.0	12.0

BL: Biconi-Log

Conditions

Date 2001/8/29

○Testing circuitry



LF1、LF2 : SC-05-10J (TOKIN)
 C1、C2 : CFJC22E334M (Nitsuko)
 C3 : 50V 68 μ F PMseries (nichicon)
 C4、C5 : DE1307-640E472M-KH (MURATA)
 C6 : 25V 470 μ F LXZseries (NIPPON CHEMI-CON)
 C7 : MDD21H104M (Nitsuko)

Fig. Testing circuitry

LINE CONDUCTION

Model Name : CBS1002412

Model No. :

Serial No. :

Points : 2

Detector : PEAK/QP/Ave.

Line Mode : VA/VB

Limit1: [EN 55022] Class B(QP)

Limit2: [EN 55022] Class B(Ave.)

Tested by : K.Kinoshita

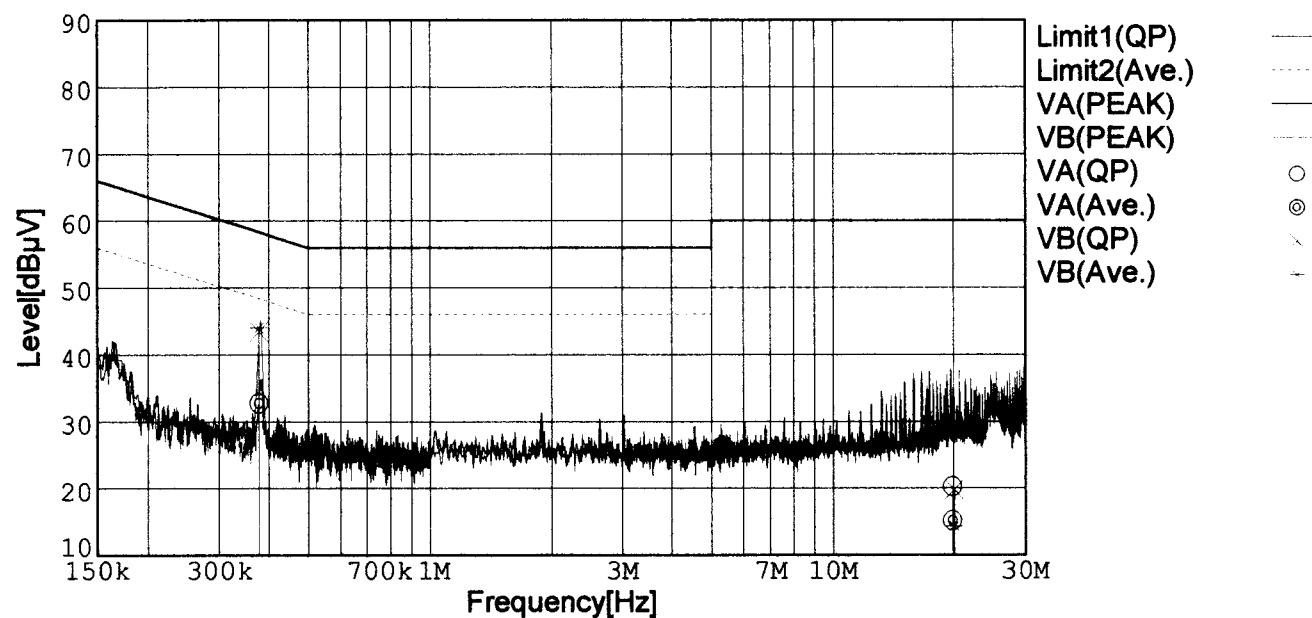
Temp. : 25degC

Humi. : 50%

Date : 2001/8/29 11:38

Test Equip. : R3132,ESPC

Comment : DC24V Io=8.4A

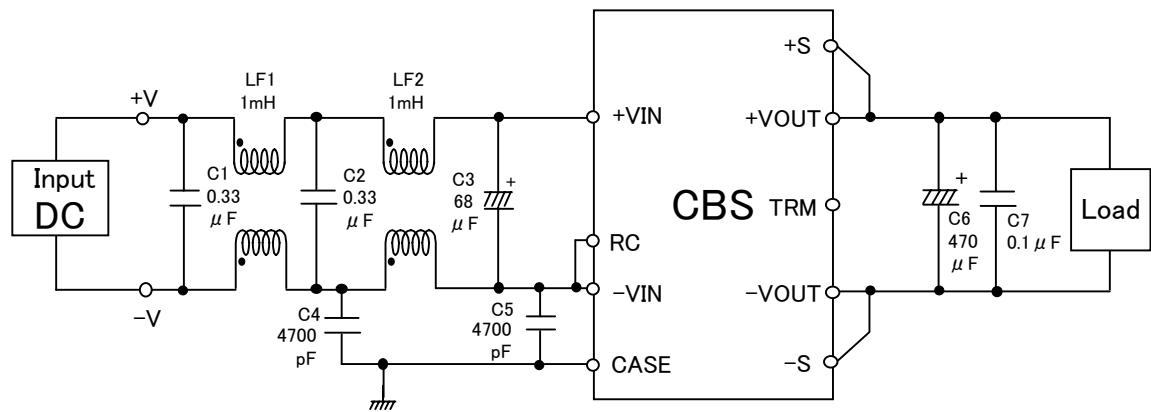


Frequency [MHz]	Meter Reading (QP) [dBμV]	Meter Reading (Ave.) [dBμV]	Factor [dB]	Level (QP) [dBμV]	Level (Ave.) [dBμV]	Line	Limit (QP) [dBμV]	Limit (Ave.) [dBμV]	Margin (QP)[dB]	Margin (Ave.) [dB]
0.3760	22.9	22.9	9.8	32.7	32.7	VA	58.4	48.4	25.7	15.7
19.8820	9.9	4.9	10.3	20.2	15.2	VA	60.0	50.0	39.8	34.8
0.3758	33.6	34.2	9.8	43.4	44.0	VB	58.4	48.4	15.0	4.4
20.0634	9.5	4.0	10.3	19.8	14.3	VB	60.0	50.0	40.2	35.7

Conditions

Date 2001/8/29

○Testing circuitry



- LF1、LF2 : SC-05-10J (TOKIN)
 C1、C2 : CFJC22E334M (Nitsuko)
 C3 : 50V 68 μ F PMseries (nichicon)
 C4、C5 : DE1307-640E472M-KH (MURATA)
 C6 : 25V 470 μ F LXZseries (NIPPON CHEMI-CON)
 C7 : MDD21H104M (Nitsuko)

Fig. Testing circuitry