



# RADIATED EMISSION

Model Name : CBS1002403

Model No. :

Serial No. :

Points : 3

Detector : PEAK/QP

Polarization : Hori. & Vert.

Limit: [EN 55022] Class B<3m>

Tested by : T.Oiwake

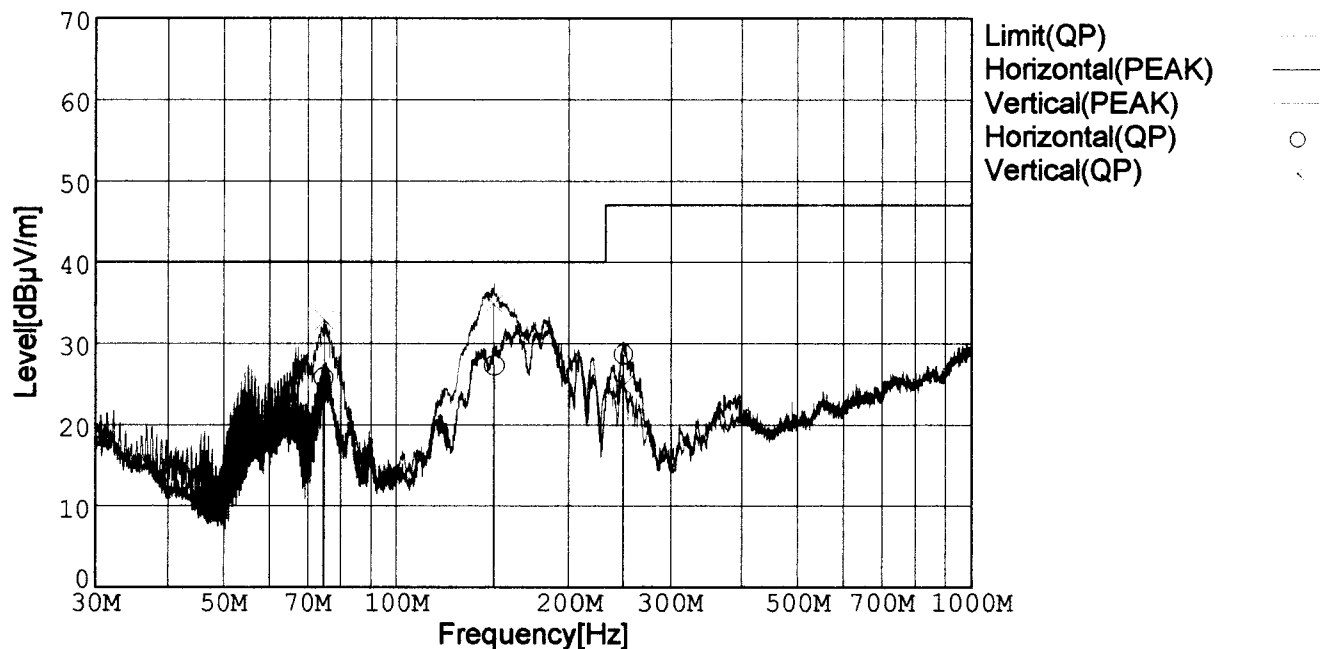
Temp. : 25degC

Humi. : 40%

Date : 2002/7/12 16:33

Test Equip. : R3132,ESPC

Comment : DC 24V, 23.4A



Frequency [MHz]	Meter Reading (QP) [dBμV]	Ant. Type	Antenna Factor [dB/m]	Cable & Preamp [dB]	Level (QP) [dBμV/m]	Angle[°]	Height [cm]	Polar.	Limit [dBμV/m]	Margin [dB]
74.733	51.2	BL	6.3	-31.7	25.8	267	153	Hori.	40.0	14.2
148.185	48.1	BL	10.6	-31.4	27.3	308	157	Hori.	40.0	12.7
248.053	47.6	BL	12.1	-31.0	28.7	125	107	Hori.	47.0	18.3
75.013	58.2	BL	6.4	-31.7	32.9	0	121	Vert.	40.0	7.1
147.774	55.6	BL	10.7	-31.4	34.9	355	155	Vert.	40.0	5.1
247.650	43.6	BL	12.1	-31.0	24.7	263	149	Vert.	47.0	22.3

BL: Biconi-Log

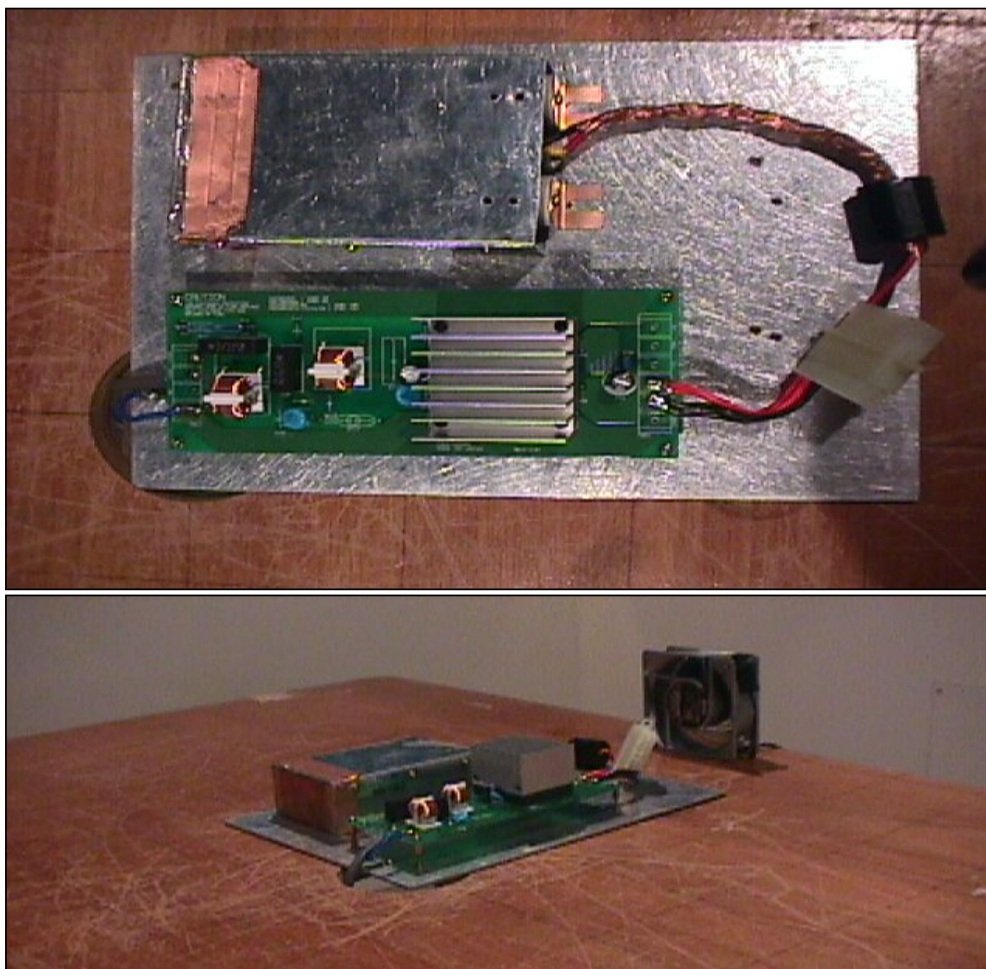
# Conditions

Date 2002/7/19

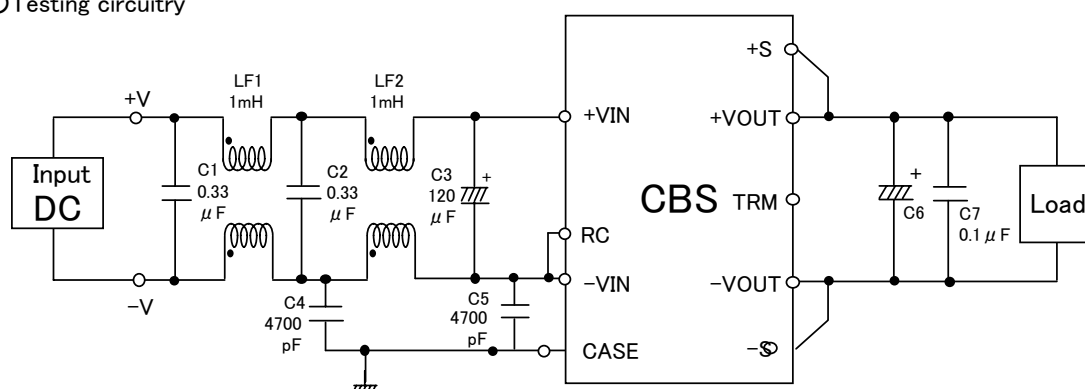
Test : RADIATED EMISSION

Model Name : CBS1002403/15/24

○Photographs of Test Set-Up



○Testing circuitry



LF1、LF2: SC-05-10J(TOKIN)

C1、C2 : CFJC22E334M (Nitsuko)

C3 : 50V 120  $\mu$  F PMseries (nichicon)

C4、C5 : DE1307-640E472M-KH (MURATA)

C6 : CBS1002403 10V 2200  $\mu$  F LXZseries (NIPPON CHEMI-CON)

CBS1002415 25V 470  $\mu$  F LXZseries (NIPPON CHEMI-CON)

CBS1002424 35V 220  $\mu$  F LXZseries (NIPPON CHEMI-CON)

C7 : MDD21H104M (Nitsuko)

Fig. Testing circuitry



# LINE CONDUCTION

Model Name : CBS1002403

Model No. :

Serial No. :

Points : 2

Detector : PEAK/QP/Ave.

Line Mode : VA/VB

Limit1: [EN 55022] Class B(QP)

Limit2: [EN 55022] Class B(Ave.)

Tested by :

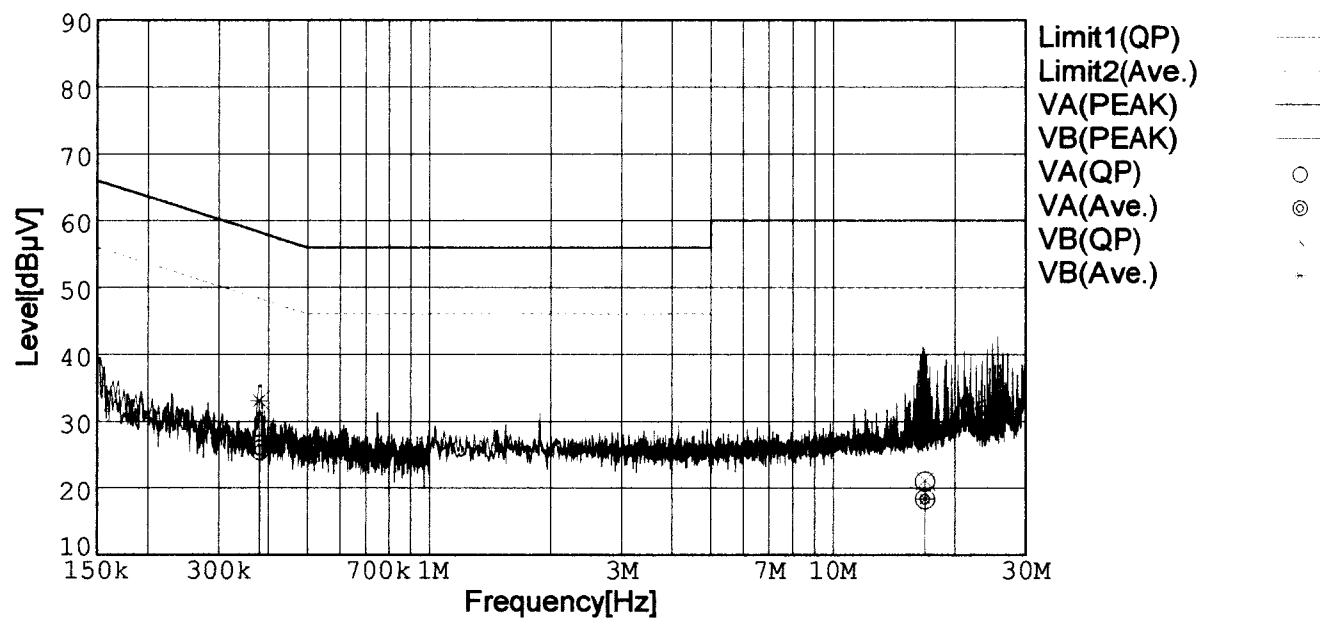
Temp. : 25degC

Humi. : 40%

Date : 2002/7/11 16:23

Test Equip. : R3132,ESPC

Comment : DC 24V, Io=23.4A



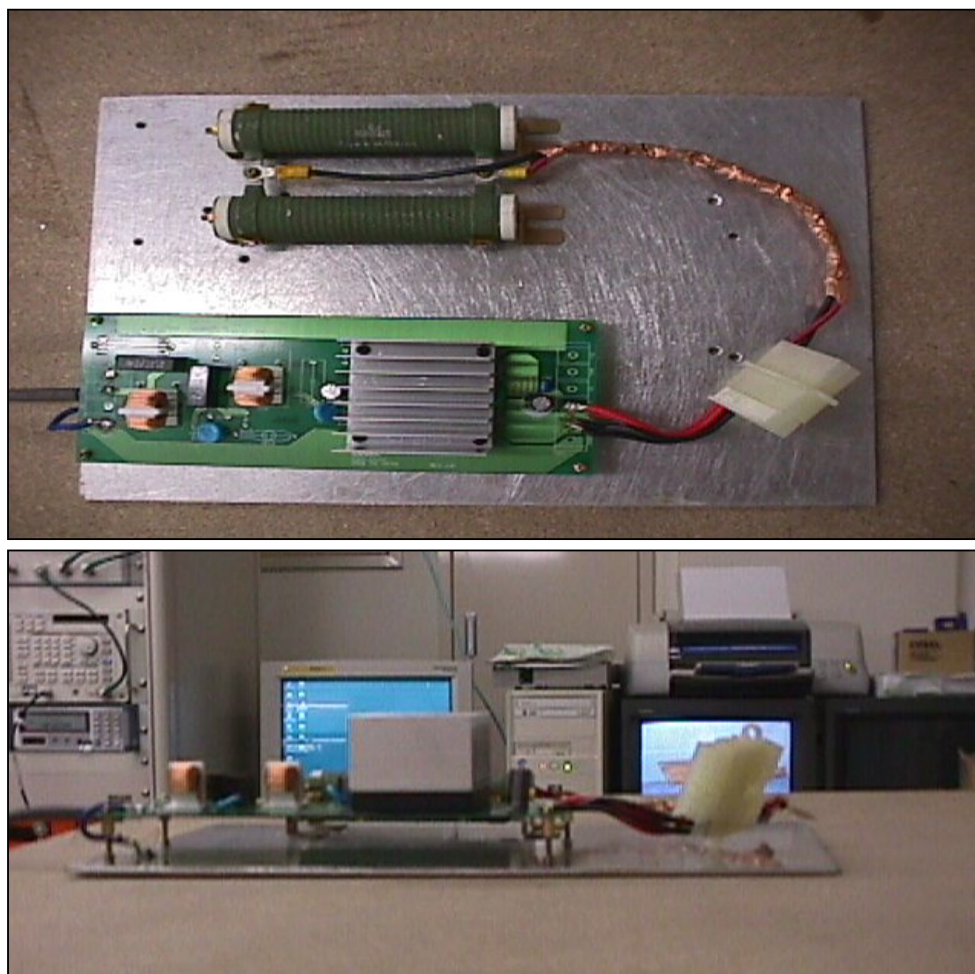
Frequency [MHz]	Meter Reading (QP) [dBμV]	Meter Reading (Ave.) [dBμV]	Factor [dB]	Level (QP) [dBμV]	Level (Ave.) [dBμV]	Line	Limit (QP) [dBμV]	Limit (Ave.) [dBμV]	Margin (QP)[dB]	Margin (Ave.) [dB]
0.3795	16.6	15.9	9.8	26.4	25.7	VA	58.3	48.3	31.9	22.6
16.8940	10.8	8.1	10.2	21.0	18.3	VA	60.0	50.0	39.0	31.7
0.3785	23.3	23.2	9.8	33.1	33.0	VB	58.3	48.3	25.2	15.3
16.8969	10.9	8.2	10.2	21.1	18.4	VB	60.0	50.0	38.9	31.6

# Conditions

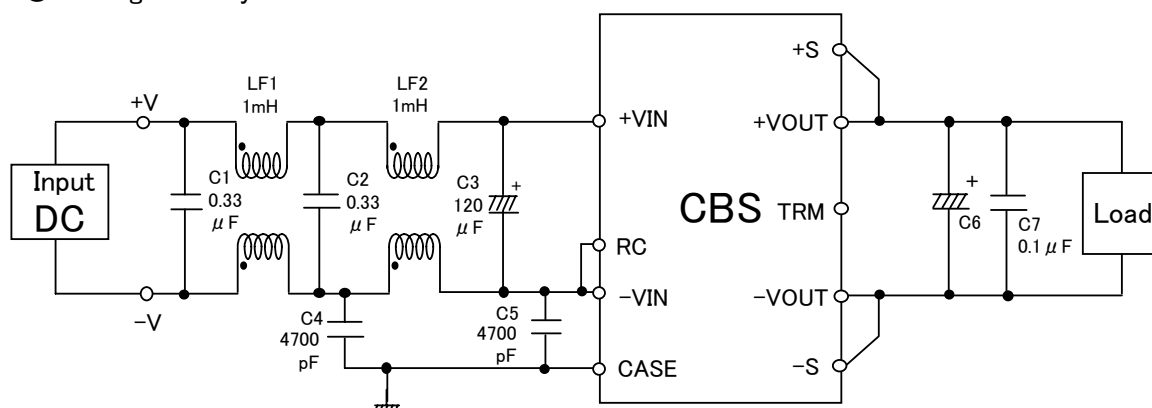
Date 2002/7/19

Test : LINE CONDUCTION  
Model Name : CBS1002403/15/24

## ○Photographs of Test Set-Up



## ○Testing circuitry



- LF1、LF2 : SC-05-10J (TOKIN)  
C1、C2 : CFJC22E334M (Nitsuko)  
C3 : 50V 120  $\mu$  F PMseries (nichicon)  
C4、C5 : DE1307-640E472M-KH (MURATA)  
C6 : CBS1002403 10V 2200  $\mu$  F LXZseries (NIPPON CHEMI-CON)  
CBS1002415 25V 470  $\mu$  F LXZseries (NIPPON CHEMI-CON)  
CBS1002424 35V 220  $\mu$  F LXZseries (NIPPON CHEMI-CON)  
C7 : MDD21H104M (Nitsuko)

Fig. Testing circuitry