

Harness to use the function is prepared in GHA & GMA series.

GHA Series GMA Series

Mating harness

Standard type (GHA300F, GHA500F : Molex connector, GMA series : Tyco connector)

Model	Harness model #	Contents
GHA300F, GHA500F	H-IN-17	Input harness
	H-SN-34	Harness for using all functions.
	H-SN-35	Harness for using AUX (5V) remote control and PG terminal.
	H-SN-56	Harness for using all functions. (J2)
	H-SN-57	Harness for using AUX (5V) remote control and PG terminal. (J2)
GMA300F	H-IN-24	Input harness
	H-SN-18	Harness for using AUX (12V).
	H-SN-38	Harness for using all functions.
	H-SN-79	Harness for using all functions. (AWG24 for 1A)

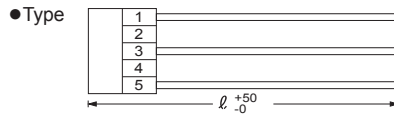
-J1 and -J3 type (J.S.T. connector)

Model	Harness model #	Contents
GHA300F, GHA500F	H-IN-18	Input harness
	H-SN-38	Harness for using all functions.
	H-SN-39	Harness for using AUX (5V) remote control and PG terminal.
	H-SN-79	Harness for using all functions. (AWG24 for 1A)
GHA700F	H-IN-26	Input harness
	H-SN-38	Harness for using all functions.
	H-SN-39	Harness for using AUX (5V) remote control and PG terminal.
	H-SN-79	Harness for using all functions. (AWG24 for 1A)
GMA300F	H-IN-18	Input harness
	H-SN-18	Harness for using AUX (12V).
	H-SN-38	Harness for using all functions.
	H-SN-79	Harness for using all functions. (AWG24 for 1A)

<p>●Model number H-IN-17</p> <p>Housing : 09-50-8031 (Molex) Pin (1-3) : 08-50-0105 (Molex) : 08-65-0114 (Molex) (4) : 170603-2 (Tyco Electronics) Weight : 25g max</p>	<p>●Type</p>	<p>●Wire</p> <table border="1"> <thead> <tr> <th>Pin #</th> <th>Wire</th> <th>AWG</th> <th>Color</th> <th>Length l (mm)</th> </tr> </thead> <tbody> <tr> <td>1</td> <td>UL3239</td> <td>18</td> <td>black</td> <td>500</td> </tr> <tr> <td>2</td> <td></td> <td></td> <td></td> <td></td> </tr> <tr> <td>3</td> <td>UL3239</td> <td>18</td> <td>white</td> <td>500</td> </tr> <tr> <td>4</td> <td>UL3239</td> <td>18</td> <td>green</td> <td>500</td> </tr> </tbody> </table> <p>*The color becomes the light hue.</p>	Pin #	Wire	AWG	Color	Length l (mm)	1	UL3239	18	black	500	2					3	UL3239	18	white	500	4	UL3239	18	green	500
Pin #	Wire	AWG	Color	Length l (mm)																							
1	UL3239	18	black	500																							
2																											
3	UL3239	18	white	500																							
4	UL3239	18	green	500																							
<p>●Model number H-IN-18</p> <p>Housing : VHR-3N (J.S.T.) Pin (1-3) : SVH-21T-P1.1 (J.S.T.) (4) : 170603-2 (Tyco Electronics) Weight : 35g max</p>	<p>●Type</p>	<p>●Wire</p> <table border="1"> <thead> <tr> <th>Pin #</th> <th>Wire</th> <th>AWG</th> <th>Color</th> <th>Length l (mm)</th> </tr> </thead> <tbody> <tr> <td>1</td> <td>UL1015</td> <td>18</td> <td>black</td> <td>500</td> </tr> <tr> <td>2</td> <td></td> <td></td> <td></td> <td></td> </tr> <tr> <td>3</td> <td>UL1015</td> <td>18</td> <td>white</td> <td>500</td> </tr> <tr> <td>4</td> <td>UL1015</td> <td>18</td> <td>green</td> <td>500</td> </tr> </tbody> </table>	Pin #	Wire	AWG	Color	Length l (mm)	1	UL1015	18	black	500	2					3	UL1015	18	white	500	4	UL1015	18	green	500
Pin #	Wire	AWG	Color	Length l (mm)																							
1	UL1015	18	black	500																							
2																											
3	UL1015	18	white	500																							
4	UL1015	18	green	500																							
<p>●Model number H-IN-24</p> <p>Housing : 1-1123722-3 (Tyco Electronics) Pin (1-3) : 1123721-1 (Tyco Electronics) (4) : 170603-2 (Tyco Electronics) Weight : 35g max</p>	<p>●Type</p>	<p>●Wire</p> <table border="1"> <thead> <tr> <th>Pin #</th> <th>Wire</th> <th>AWG</th> <th>Color</th> <th>Length l (mm)</th> </tr> </thead> <tbody> <tr> <td>1</td> <td>UL1015</td> <td>18</td> <td>black</td> <td>500</td> </tr> <tr> <td>2</td> <td></td> <td></td> <td></td> <td></td> </tr> <tr> <td>3</td> <td>UL1015</td> <td>18</td> <td>white</td> <td>500</td> </tr> <tr> <td>4</td> <td>UL1015</td> <td>18</td> <td>green</td> <td>500</td> </tr> </tbody> </table>	Pin #	Wire	AWG	Color	Length l (mm)	1	UL1015	18	black	500	2					3	UL1015	18	white	500	4	UL1015	18	green	500
Pin #	Wire	AWG	Color	Length l (mm)																							
1	UL1015	18	black	500																							
2																											
3	UL1015	18	white	500																							
4	UL1015	18	green	500																							

●Model number
H-IN-26

Housing : VHR-5N (J.S.T.)
Pin : SVH-21T-P1.1(J.S.T.)
Weight : 30g max

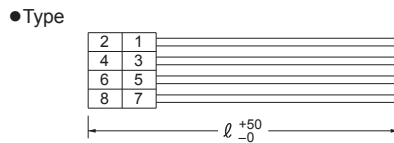


●Wire

Pin #	Wire	AWG	Color	Length l (mm)
1	UL1015	18	green	500
2				
3	UL1015	18	white	500
4				
5	UL1015	18	black	500

●Model number
H-SN-34

Housing : 51110-0851 (Molex)
Pin : 50394-8051 (Molex)
Weight : 8g max

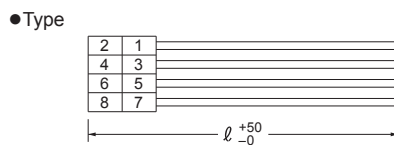


●Wire

Pin #	Wire	AWG	Color	Length l (mm)
1	UL1061	28	red	500
2	UL1061	28	black	500
3	UL1061	28	blue	500
4	UL1061	28	brown	500
5	UL1061	28	yellow	500
6	UL1061	28	gray	500
7	UL1061	28	orange	500
8	UL1061	28	purple	500

●Model number
H-SN-56

Housing : 51110-0860 (Molex)
Pin : 50394-8051 (Molex)
Weight : 8g max

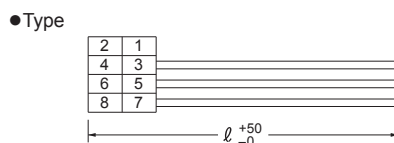


●Wire

Pin #	Wire	AWG	Color	Length l (mm)
1	UL1061	28	red	500
2	UL1061	28	black	500
3	UL1061	28	blue	500
4	UL1061	28	brown	500
5	UL1061	28	yellow	500
6	UL1061	28	gray	500
7	UL1061	28	orange	500
8	UL1061	28	purple	500

●Model number
H-SN-35

Housing : 51110-0851 (Molex)
Pin : 50394-8051 (Molex)
Weight : 6g max

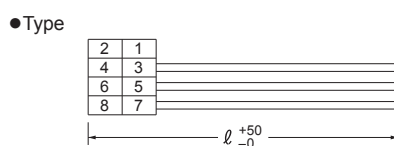


●Wire

Pin #	Wire	AWG	Color	Length l (mm)
1				
2				
3	UL1061	28	blue	500
4	UL1061	28	brown	500
5	UL1061	28	yellow	500
6	UL1061	28	gray	500
7	UL1061	28	orange	500
8	UL1061	28	purple	500

●Model number
H-SN-57

Housing : 51110-0860 (Molex)
Pin : 50394-8051 (Molex)
Weight : 6g max

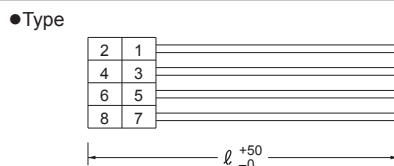


●Wire

Pin #	Wire	AWG	Color	Length l (mm)
1				
2				
3	UL1061	28	blue	500
4	UL1061	28	brown	500
5	UL1061	28	yellow	500
6	UL1061	28	gray	500
7	UL1061	28	orange	500
8	UL1061	28	purple	500

●Model number
H-SN-38

Housing : PHDR-08VS (J.S.T.)
Pin : SPHD-002T-P0.5 (J.S.T.)
Weight : 8g max



●Wire

Pin #	Wire	AWG	Color	Length l (mm)
1	UL1061	28	red	500
2	UL1061	28	black	500
3	UL1061	28	blue	500
4	UL1061	28	brown	500
5	UL1061	28	yellow	500
6	UL1061	28	gray	500
7	UL1061	28	orange	500
8	UL1061	28	purple	500

<p>●Model number H-SN-39</p> <p>Housing : PHDR-08VS (J.S.T.) Pin : SPHD-002T-P0.5 (J.S.T.) Weight : 6g max</p>	<p>●Type</p>	<p>●Wire</p> <table border="1"> <thead> <tr> <th>Pin #</th> <th>Wire</th> <th>AWG</th> <th>Color</th> <th>Length ℓ (mm)</th> </tr> </thead> <tbody> <tr><td>1</td><td></td><td></td><td></td><td></td></tr> <tr><td>2</td><td></td><td></td><td></td><td></td></tr> <tr><td>3</td><td>UL1061</td><td>28</td><td>blue</td><td>500</td></tr> <tr><td>4</td><td>UL1061</td><td>28</td><td>brown</td><td>500</td></tr> <tr><td>5</td><td>UL1061</td><td>28</td><td>yellow</td><td>500</td></tr> <tr><td>6</td><td>UL1061</td><td>28</td><td>gray</td><td>500</td></tr> <tr><td>7</td><td>UL1061</td><td>28</td><td>orange</td><td>500</td></tr> <tr><td>8</td><td>UL1061</td><td>28</td><td>purple</td><td>500</td></tr> </tbody> </table>	Pin #	Wire	AWG	Color	Length ℓ (mm)	1					2					3	UL1061	28	blue	500	4	UL1061	28	brown	500	5	UL1061	28	yellow	500	6	UL1061	28	gray	500	7	UL1061	28	orange	500	8	UL1061	28	purple	500
Pin #	Wire	AWG	Color	Length ℓ (mm)																																											
1																																															
2																																															
3	UL1061	28	blue	500																																											
4	UL1061	28	brown	500																																											
5	UL1061	28	yellow	500																																											
6	UL1061	28	gray	500																																											
7	UL1061	28	orange	500																																											
8	UL1061	28	purple	500																																											
<p>●Model number H-SN-18</p> <p>Housing : PHR-2(J.S.T.) Pin : SPH-002T-P0.5S(J.S.T.) Weight : 4g max</p>	<p>●Type</p>	<p>●Wire</p> <table border="1"> <thead> <tr> <th>Pin #</th> <th>Wire</th> <th>AWG</th> <th>Color</th> <th>Length ℓ (mm)</th> </tr> </thead> <tbody> <tr><td>1</td><td>UL1007</td><td>26</td><td>yellow</td><td>500</td></tr> <tr><td>2</td><td>UL1007</td><td>26</td><td>orange</td><td>500</td></tr> </tbody> </table>	Pin #	Wire	AWG	Color	Length ℓ (mm)	1	UL1007	26	yellow	500	2	UL1007	26	orange	500																														
Pin #	Wire	AWG	Color	Length ℓ (mm)																																											
1	UL1007	26	yellow	500																																											
2	UL1007	26	orange	500																																											
<p>●Model number H-SN-79</p> <p>Housing : PHDR-08VS(J.S.T.) Pin : SPHD-002T-P0.5(J.S.T.) Weight : 20g max</p>	<p>●Type</p>	<p>●Wire</p> <table border="1"> <thead> <tr> <th>Pin #</th> <th>Wire</th> <th>AWG</th> <th>Color</th> <th>Length ℓ (mm)</th> </tr> </thead> <tbody> <tr><td>1</td><td>UL1007</td><td>24</td><td>red</td><td>500</td></tr> <tr><td>2</td><td>UL1007</td><td>24</td><td>black</td><td>500</td></tr> <tr><td>3</td><td>UL1007</td><td>24</td><td>blue</td><td>500</td></tr> <tr><td>4</td><td>UL1007</td><td>24</td><td>brown</td><td>500</td></tr> <tr><td>5</td><td>UL1007</td><td>24</td><td>yellow</td><td>500</td></tr> <tr><td>6</td><td>UL1007</td><td>24</td><td>gray</td><td>500</td></tr> <tr><td>7</td><td>UL1007</td><td>24</td><td>orange</td><td>500</td></tr> <tr><td>8</td><td>UL1007</td><td>24</td><td>purple</td><td>500</td></tr> </tbody> </table>	Pin #	Wire	AWG	Color	Length ℓ (mm)	1	UL1007	24	red	500	2	UL1007	24	black	500	3	UL1007	24	blue	500	4	UL1007	24	brown	500	5	UL1007	24	yellow	500	6	UL1007	24	gray	500	7	UL1007	24	orange	500	8	UL1007	24	purple	500
Pin #	Wire	AWG	Color	Length ℓ (mm)																																											
1	UL1007	24	red	500																																											
2	UL1007	24	black	500																																											
3	UL1007	24	blue	500																																											
4	UL1007	24	brown	500																																											
5	UL1007	24	yellow	500																																											
6	UL1007	24	gray	500																																											
7	UL1007	24	orange	500																																											
8	UL1007	24	purple	500																																											